



Abbotsford Road, Blackpool

Offers Over **£140,000**

Abbotsford Road

Blackpool

This well presented 3-bedroom mid-terraced property offers a seamless blend of contemporary design and practical living, with the added benefit of no onward chain. The ground floor comprises a welcoming hallway leading to a lounge, a modern open plan kitchen/diner, and a charming conservatory, perfect for entertaining guests or enjoying quiet evenings. The fitted kitchen, renovated in 2021, boasts integrated appliances, a breakfast bar, and ample storage space. Upstairs, there are 3 well-appointed bedrooms, one featuring fitted wardrobes, along with a 3-piece suite family bathroom. A staircase leads to a versatile loft space complete with power, light, and Velux windows, ideal for use as an additional living area or home office.

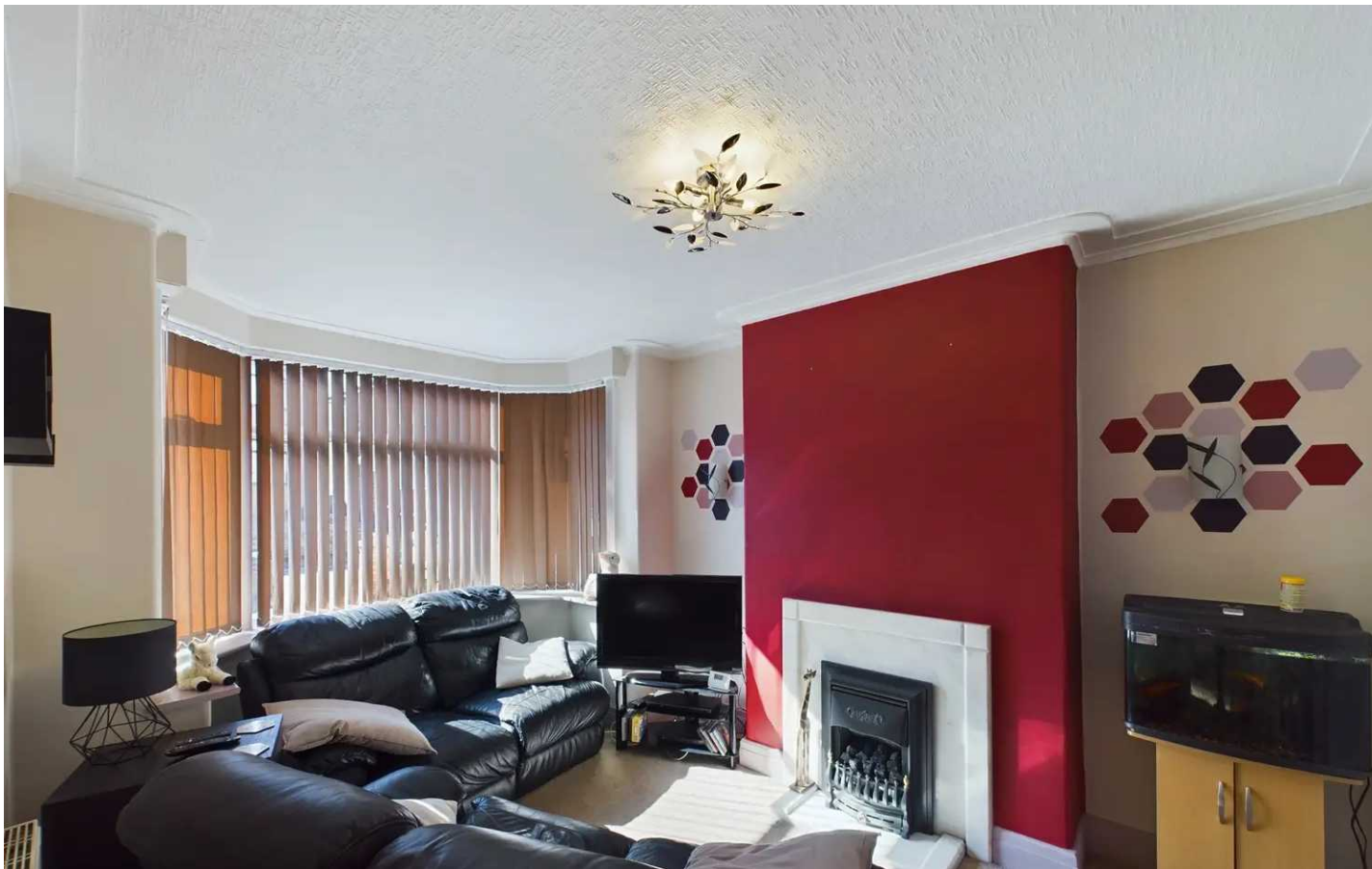
Externally, the property offers a front driveway for convenient parking, while the enclosed low-maintenance flagged garden at the rear is a peaceful oasis with a brick outhouse, wooden shed for storage, and side gate access. Whether you seek a stylish family home or a smart investment opportunity, this property ticks all the boxes, presenting a rare chance to secure a beautiful residence in a sought-after location. Book your viewing today to experience the comfort and convenience this property has to offer.

Council Tax band: A

Tenure: Freehold

- No Onward Chain
- Hallway, Lounge, Open Plan Kitchen/Diner, Conservatory
- Fitted Kitchen Renovated in 2021 with integrated oven and hob, breakfast bar
- Landing, 3 Bedrooms, one with fitted wardrobes, 3 Piece Suite Bathroom, Staircase leading to Loft Space with Power, Light, Velux Windows.
- Off Road Parking, Enclosed Rear Garden with Storage Shed.
- uPVC Double Glazing, Gas Central Heating





Hallway

10' 11" x 5' 11" (3.34m x 1.80m)

Lounge

13' 9" x 8' 11" (4.20m x 2.72m)

Kitchen/Diner

11' 4" x 16' 6" (3.45m x 5.02m)

Conservatory

9' 5" x 8' 3" (2.86m x 2.51m)

Landing

7' 1" x 3' 0" (2.17m x 0.92m)

Bedroom 1

10' 10" x 9' 10" (3.30m x 3.00m)

Bedroom 2

13' 10" x 9' 10" (4.22m x 2.99m)

Bedroom 3

6' 8" x 6' 4" (2.03m x 1.92m)

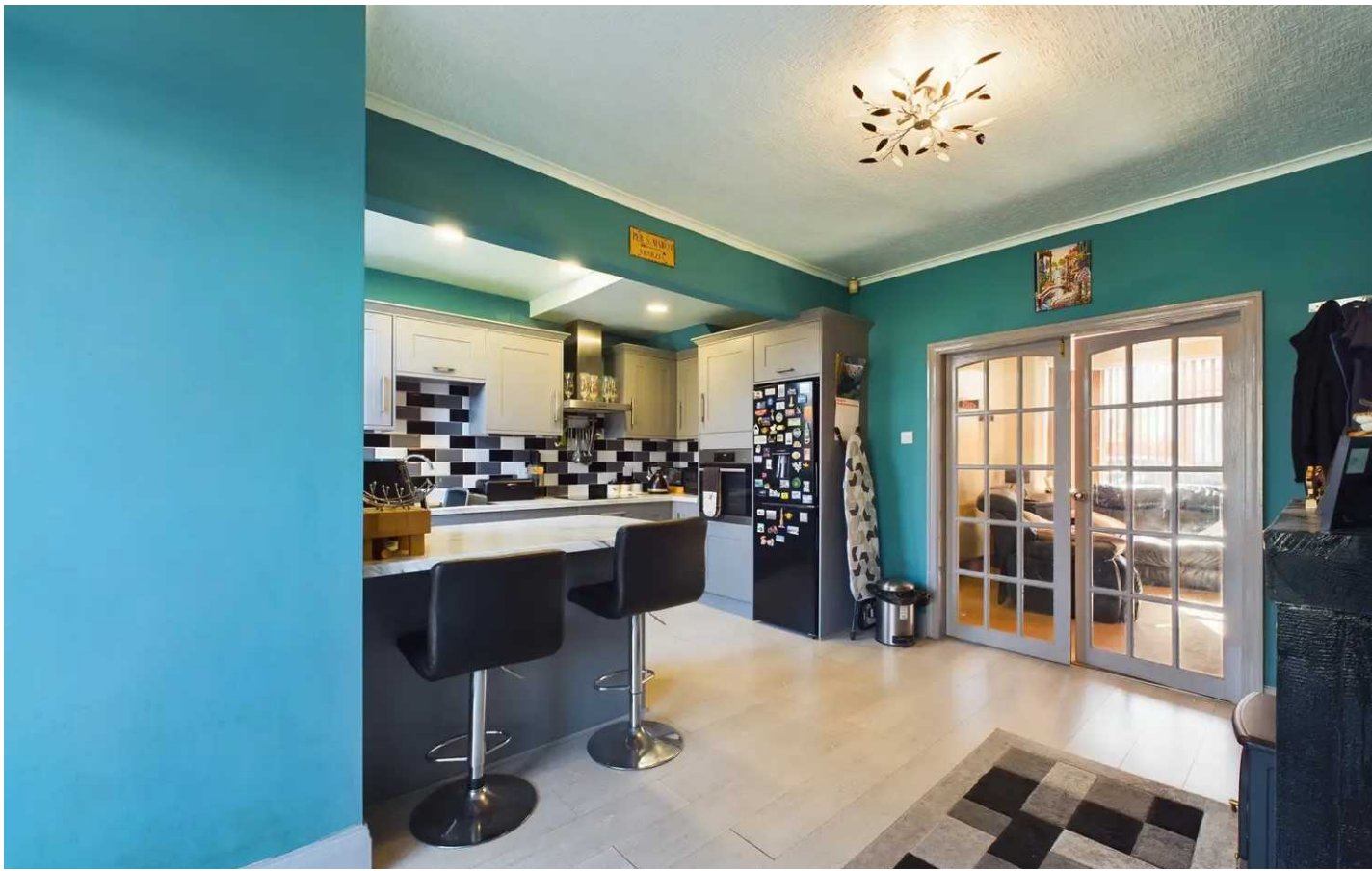
Bathroom

5' 5" x 6' 3" (1.64m x 1.91m)

Loft Room

14' 8" x 15' 4" (4.47m x 4.67m)





Hallway
10' 11" x 5' 11" (3.34m x 1.80m)

Lounge
13' 9" x 8' 11" (4.20m x 2.72m)

Kitchen/Diner
11' 4" x 16' 6" (3.45m x 5.02m)

Conservatory
9' 5" x 8' 3" (2.86m x 2.51m)

Landing
7' 1" x 3' 0" (2.17m x 0.92m)

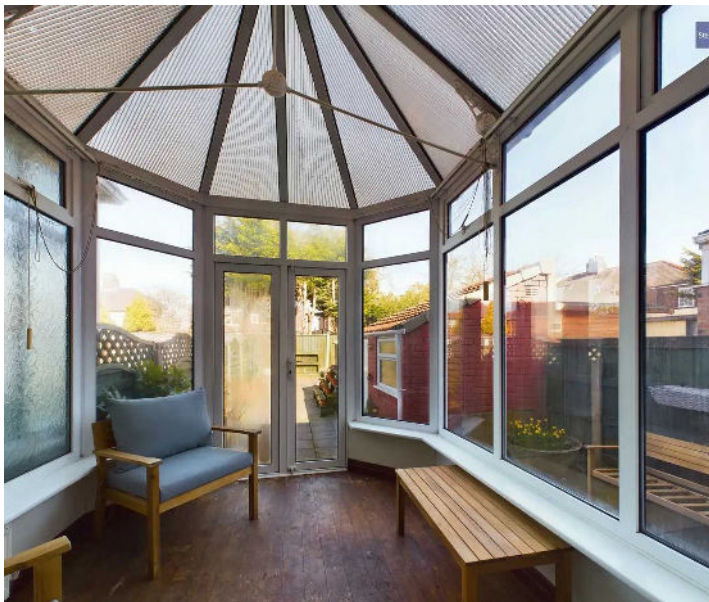
Bedroom 1
10' 10" x 9' 10" (3.30m x 3.00m)

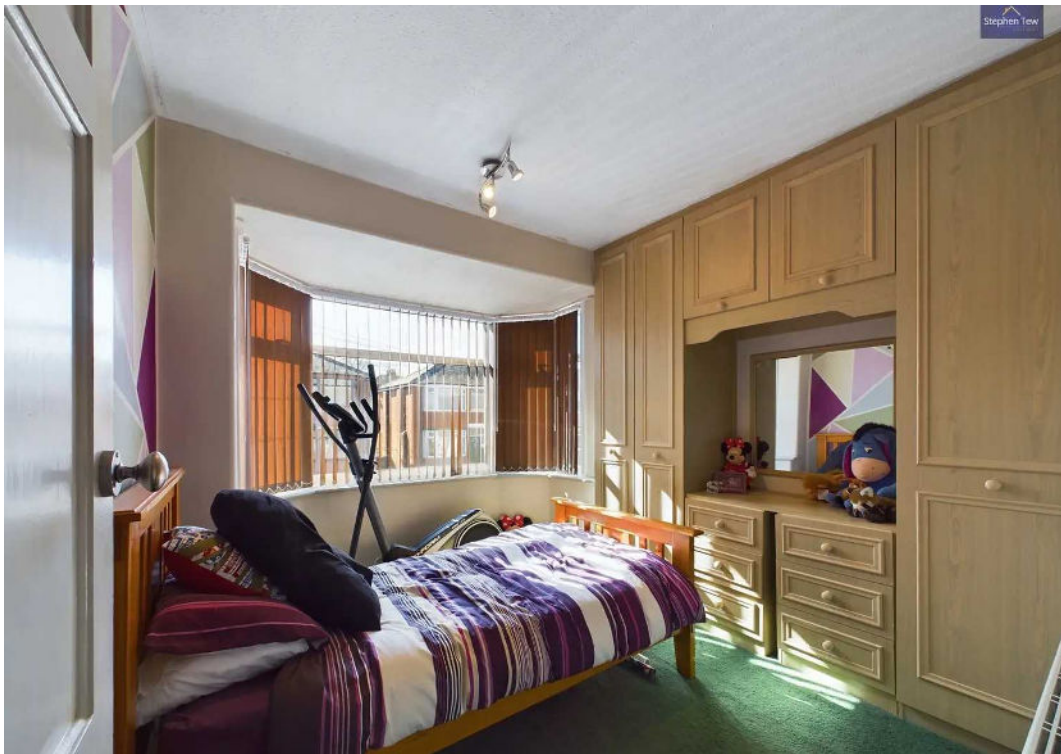
Bedroom 2
13' 10" x 9' 10" (4.22m x 2.99m)

Bedroom 3
6' 8" x 6' 4" (2.03m x 1.92m)

Bathroom
5' 5" x 6' 3" (1.64m x 1.91m)

Loft Room
14' 8" x 15' 4" (4.47m x 4.67m)







FRONT GARDEN

Driveway to the front.

REAR GARDEN

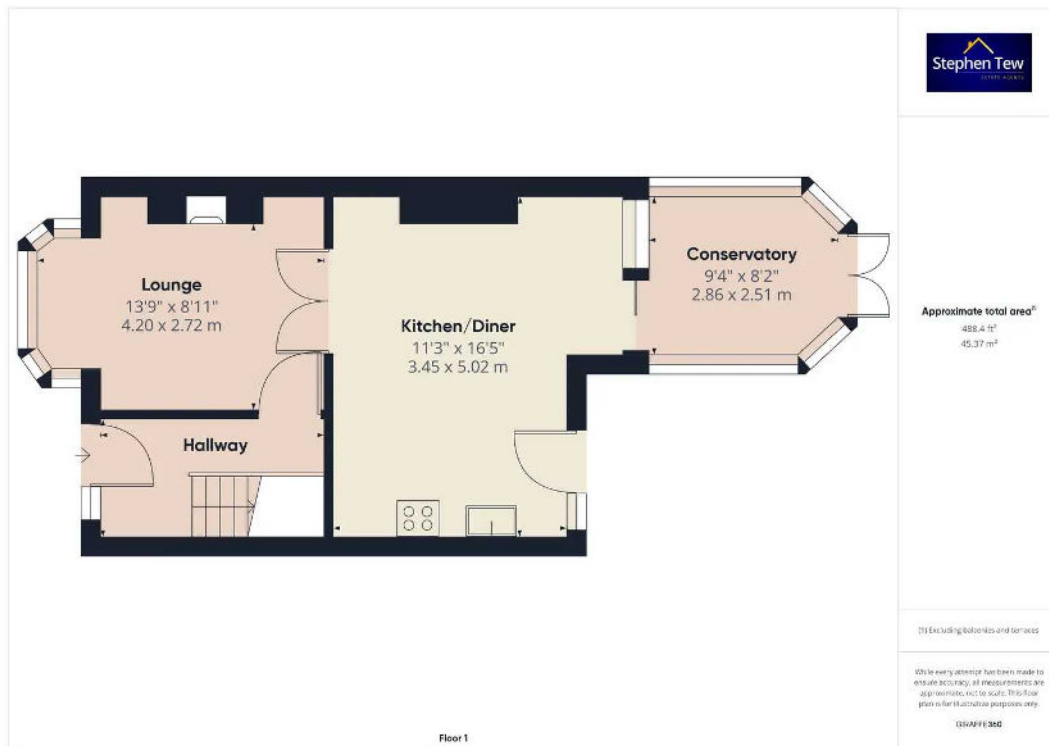
Enclosed low maintenance flagged garden to the rear with brick outhouse, wooden shed for storage and side gate access.

OFF STREET

1 Parking Space

Driveway to the front.







Stephen Tew Estate Agents

Stephen Tew Estate Agents, 132 Highfield Road - FY4 2HH

01253 401111

info@stephentew.co.uk

www.stephentew.co.uk

