



47A Harrowside, Blackpool

Blackpool

Offers Over **£110,000**

47A Harrowside

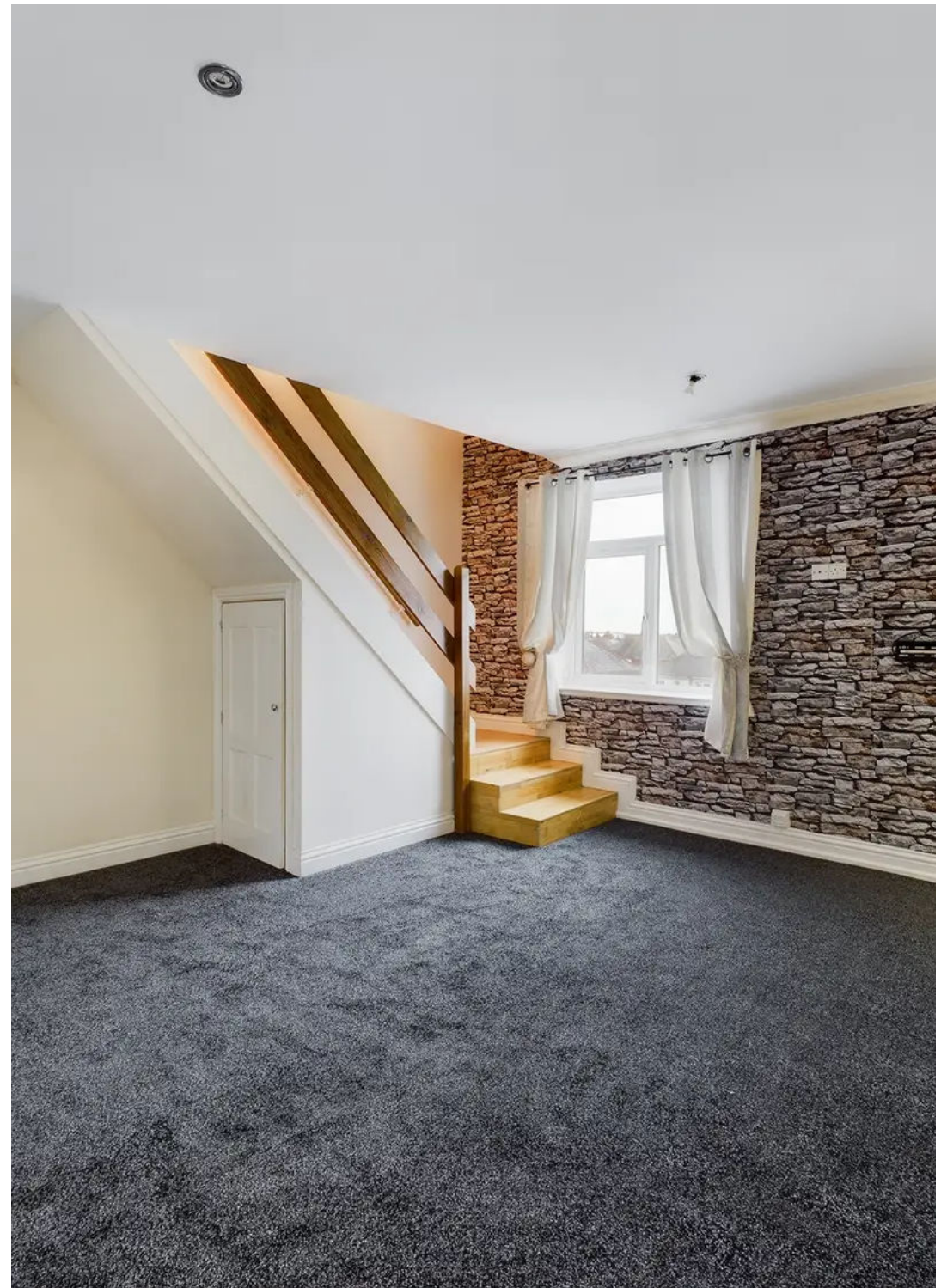
Blackpool, Blackpool

Three bedroom maisonette

Council Tax band: A

Tenure: Leasehold

- Three Bedrooms





Other

Private entrance, stairs leading to first floor.

Lounge

14' 4" x 14' 0" (4.36m x 4.27m)

Lounge, UPVC double glazed window, radiator.

Kitchen

14' 0" x 10' 8" (4.27m x 3.26m)

Recently fitted kitchen, integrated electric oven and four ring induction hob, UPVC double glazed window, radiator.

Bedroom

14' 1" x 7' 12" (4.29m x 2.43m)

Bedroom 1 to the first floor, UPVC double glazed window, radiator.

Shower Room

7' 9" x 4' 9" (2.36m x 1.46m)

Three piece shower room suite, tiled flooring, heated towel rail.

Utility Room

6' 3" x 4' 2" (1.9m x 1.27m)

Utility/Storage room, plumbing connected.



Landing

Bedroom 2

Bedroom 2 to the second floor, three double glazed sky light windows, radiator.

Bedroom 3

Bedroom 3 to the second floor, three double glazed sky light windows, radiator.

Bathroom 2

Three piece shower room suite to the second floor, tiled flooring, heated towel rail.



Other

Private entrance, stairs leading to first floor.

Lounge

14' 4" x 14' 0" (4.36m x 4.27m)

Lounge, UPVC double glazed window, radiator.

Kitchen

14' 0" x 10' 8" (4.27m x 3.26m)

Recently fitted kitchen, integrated electric oven and four ring induction hob, UPVC double glazed window, radiator.

Bedroom

14' 1" x 7' 12" (4.29m x 2.43m)

Bedroom 1 to the first floor, UPVC double glazed window, radiator.

Shower Room

7' 9" x 4' 9" (2.36m x 1.46m)

Three piece shower room suite, tiled flooring, heated towel rail.

Utility Room

6' 3" x 4' 2" (1.9m x 1.27m)

Utility/Storage room, plumbing connected.



Landing

Bedroom 2

Bedroom 2 to the second floor, three double glazed sky light windows, radiator.

Bedroom 3

Bedroom 3 to the second floor, three double glazed sky light windows, radiator.

Bathroom 2

Three piece shower room suite to the second floor, tiled flooring, heated towel rail.





Hallway
47' x 2'10"
1.43 x 0.87 m

Floor 1



Kitchen
14'0" x 10'8"
4.27 x 3.26 m

Lounge
14'3" x 14'0"
4.36 x 4.27 m

Bedroom
11'0" x 7'11"
4.29 x 2.43 m

Shower Room
7'8" x 4'9"
2.36 x 1.46 m

Utility Room
6'2" x 4'2"
1.90 x 1.27 m

Floor 2



Shower Room
6'3" x 5'6"
1.92 x 1.68 m

Landing
7'2" x 4'7"
2.19 x 1.41 m

Bedroom
11'3" x 13'2"
3.44 x 4.04 m

Bedroom
11'3" x 10'11"
3.45 x 3.37 m

Floor 3

Approximate total area⁽¹⁾

945.33 ft²

87.82 m²

Reduced headroom

62.51 ft²

5.81 m²

(1) Excluding the common and terraces

Reduced headroom (below 1.90m/6'2")

While every attempt has been made to ensure accuracy, all measurements are approximate, not to scale. This floor plan is for illustrative purposes only.

GRAFF360



Stephen Tew Estate Agents

Stephen Tew Estate Agents, 132 Highfield Road - FY4 2HH

01253 401111

info@stephentew.co.uk

www.stephentew.co.uk

