



Bloomfield Road, Blackpool, FY1

£90,000 Offers Over

Property Description

EPC Rating: F





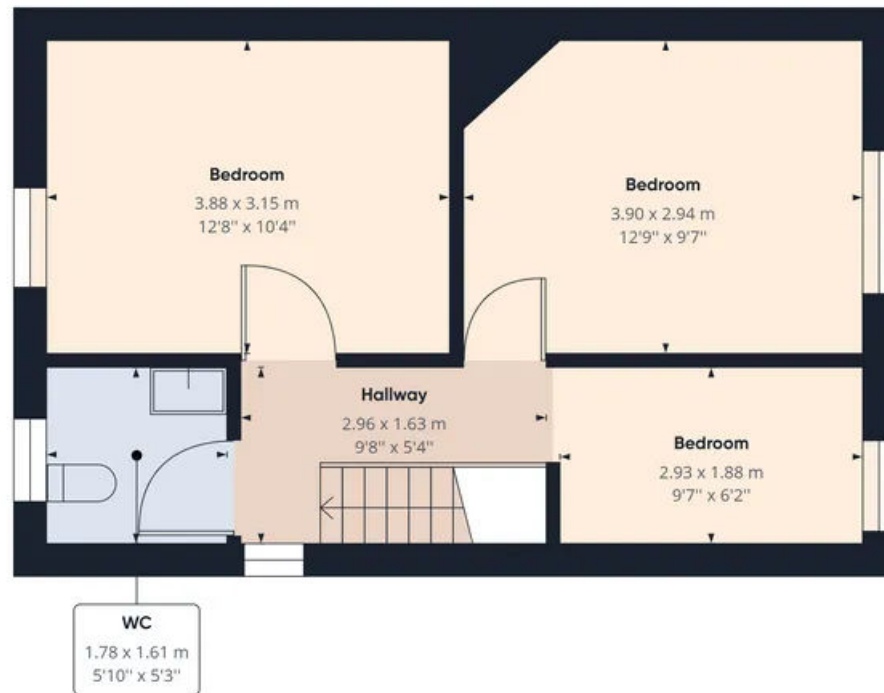




Ground Floor



First Floor



Floor 1

Approximate total area⁽¹⁾

381.19 ft²
35.41 m²

(1) Excluding balconies and terraces

While every attempt has been made to ensure accuracy, all measurements are approximate, not to scale. This floor plan is for illustrative purposes only.

GIRAFFE360



Ground Floor Building 1



Floor 1 Building 1

Approximate total area⁽¹⁾

883.14 ft²

82.05 m²

(1) Excluding balconies and terraces

While every attempt has been made to ensure accuracy, all measurements are approximate, not to scale. This floor plan is for illustrative purposes only.

GIRAFFE 360

Stephen Tew Estate Agents

01253 401111

info@stephentew.co.uk

