



**15 Dutton Road, Blackpool**

Blackpool

Offers Over **£110,000**

# 15 Dutton Road

Blackpool, Blackpool

This well presented three bedroom mid-terraced house offers modern living in a popular residential location, ideal for families and professionals alike. Upon entering the property, you are greeted by a welcoming entrance hallway leading to a spacious lounge, perfect for relaxing or entertaining guests. The separate dining room provides an excellent space for family meals or formal dining. The recently installed kitchen features integrated appliances, sleek cabinetry, and ample worktop space, catering to all your culinary needs. Adjacent to the kitchen is a practical utility room, offering additional storage and laundry facilities. Upstairs, the landing leads to three well-proportioned bedrooms, each benefiting from new carpets and fresh décor, creating a comfortable and inviting atmosphere. The family bathroom provides a suite suitable for daily routines. This property has been recently redecorated throughout, ensuring a move-in ready condition for its new owners. Additional features include a west-facing enclosed rear garden with a garage (providing secure parking or further storage options). The property is offered with no onward chain, allowing for a smooth and swift purchase process. Located in close proximity to local amenities and reputable schools, this home combines convenience with a peaceful residential setting, making it an excellent choice for those seeking a stylish and practical family home. Early viewing is highly recommended to fully appreciate the quality and value on offer.

Council Tax band: B

Tenure: Freehold

- Well Presented Mid Terraced House in a residential location
- Entrance Hallway, Lounge, Dining Room, Kitchen with Integrated Appliances, Utility Room
- Landing, 3 Bedrooms, Family Bathroom
- West Facing Enclosed Rear Garden with a Garage
- Kitchen has recently been installed, New Carpets Throughout and recently redecorated
- No Onward Chain
- In Close Proximity of Local Amenities and Schools





**Entrance Hallway**  
15' 9" x 6' 0" (4.79m x 1.84m)

**Lounge**  
14' 8" x 11' 3" (4.48m x 3.42m)

**Dining Room**  
16' 2" x 10' 11" (4.92m x 3.33m)

**Kitchen**  
15' 7" x 6' 5" (4.74m x 1.95m)

**Utility Room**  
6' 9" x 6' 0" (2.05m x 1.84m)

**Landing**  
8' 10" x 3' 10" (2.69m x 1.16m)

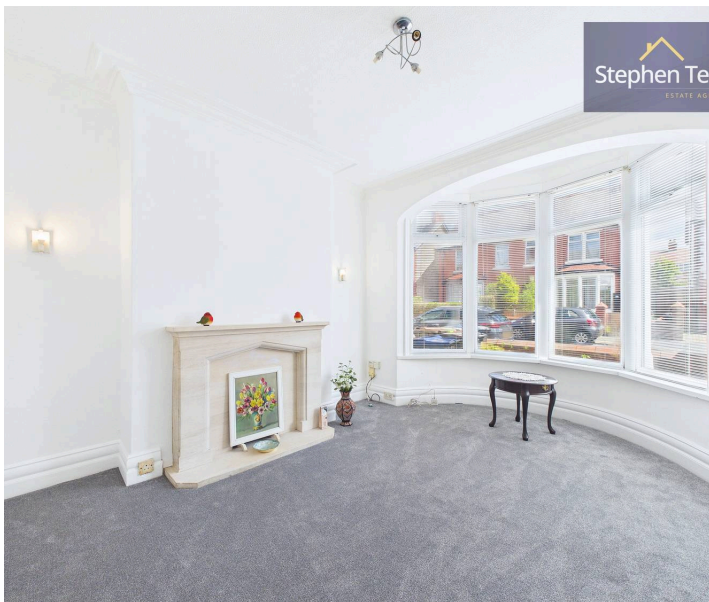
**Bedroom 1**  
11' 8" x 10' 11" (3.56m x 3.34m)

**Bedroom 2**  
12' 11" x 10' 11" (3.93m x 3.33m)

**Bedroom 3**  
7' 4" x 6' 4" (2.24m x 1.93m)

**Bathroom**  
8' 1" x 6' 5" (2.46m x 1.95m)

**Garage**





**Entrance Hallway**  
15' 9" x 6' 0" (4.79m x 1.84m)

**Lounge**  
14' 8" x 11' 3" (4.48m x 3.42m)

**Dining Room**  
16' 2" x 10' 11" (4.92m x 3.33m)

**Kitchen**  
15' 7" x 6' 5" (4.74m x 1.95m)

**Utility Room**  
6' 9" x 6' 0" (2.05m x 1.84m)

**Landing**  
8' 10" x 3' 10" (2.69m x 1.16m)

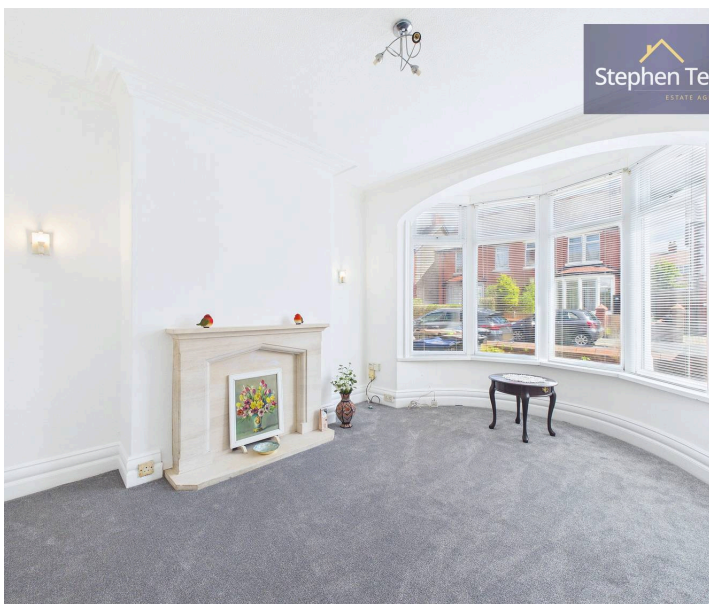
**Bedroom 1**  
11' 8" x 10' 11" (3.56m x 3.34m)

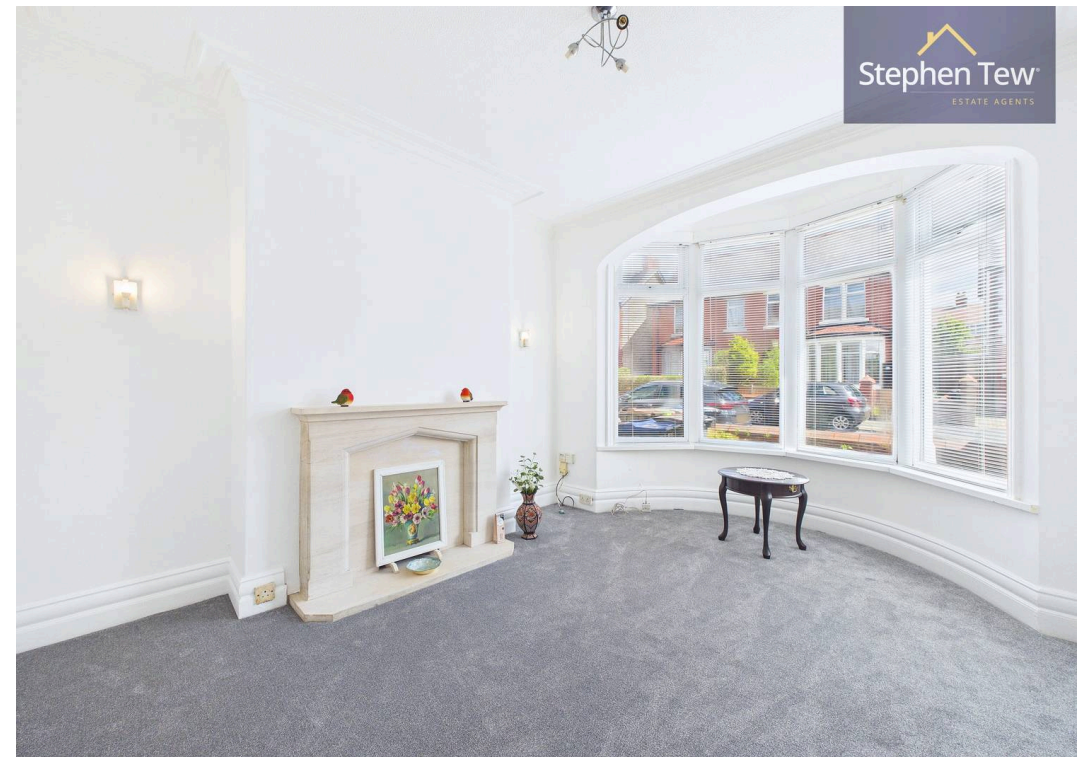
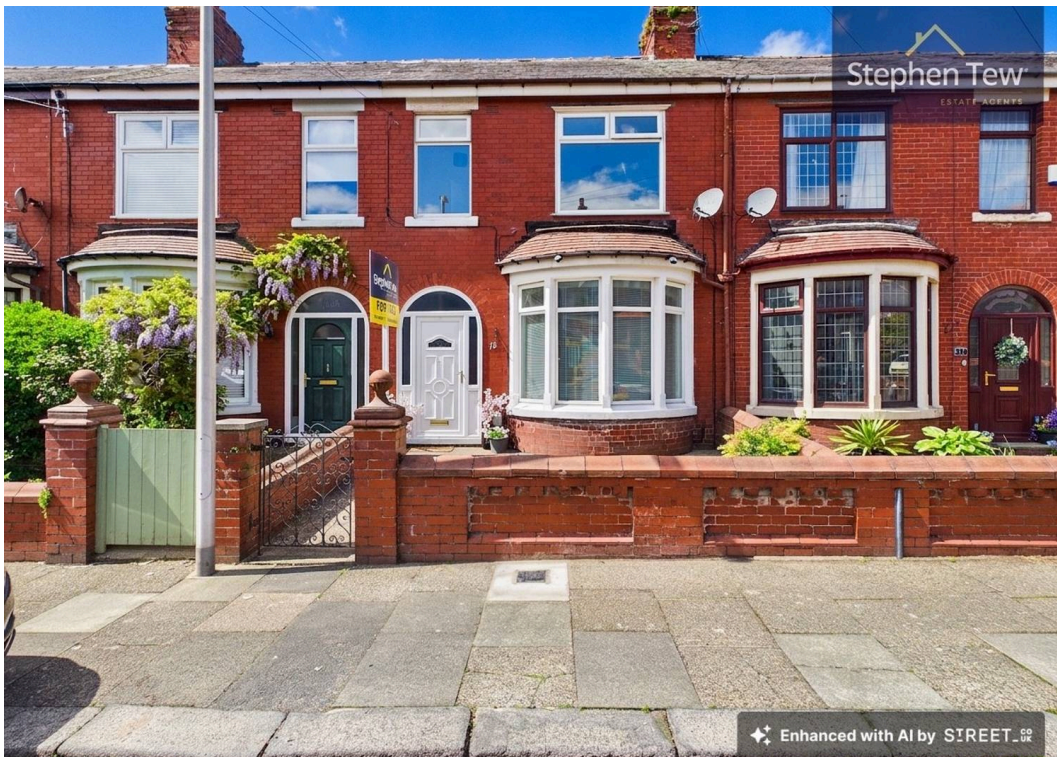
**Bedroom 2**  
12' 11" x 10' 11" (3.93m x 3.33m)

**Bedroom 3**  
7' 4" x 6' 4" (2.24m x 1.93m)

**Bathroom**  
8' 1" x 6' 5" (2.46m x 1.95m)

**Garage**







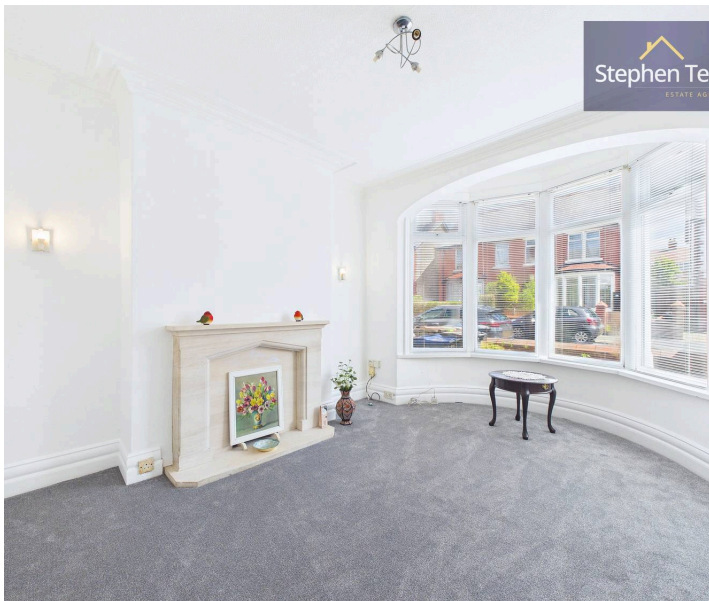
**REAR GARDEN**

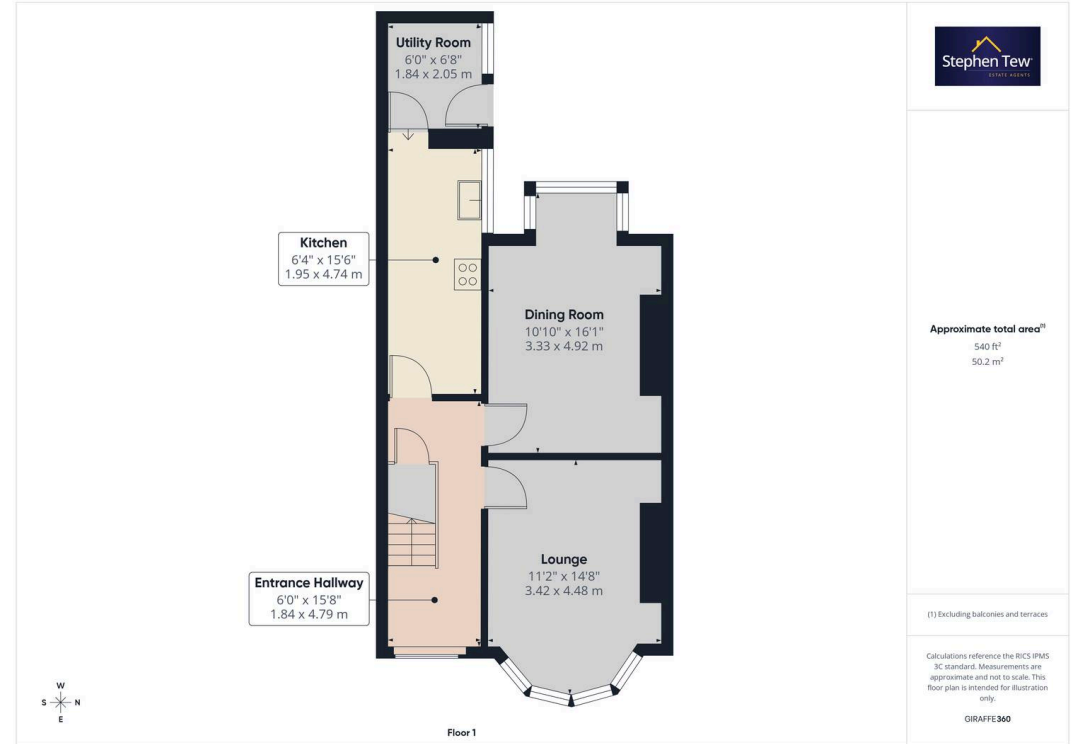
**GARAGE**

Single Garage

**ON STREET**

1 Parking Space







## Stephen Tew Estate Agents

Stephen Tew Estate Agents, 132 Highfield Road – FY4 2HH

01253 401111

[info@stephentew.co.uk](mailto:info@stephentew.co.uk)

[www.stephentew.co.uk](http://www.stephentew.co.uk)

