



53 Primrose Avenue, Blackpool

Blackpool

Offers Over **£160,000**

53 Primrose Avenue

Blackpool, Blackpool

This well presented semi detached house is situated in a popular residential location, offering an excellent opportunity for first time buyers, young families or those looking to downsize. The property is thoughtfully arranged and features an inviting entrance vestibule leading into a spacious lounge, ideal for relaxing or entertaining. The modern fitted dining kitchen is equipped with a range of wall and base units, integrated appliances and ample space for dining, making it the heart of the home. Upstairs, there are two well proportioned bedrooms, both benefitting from plenty of natural light. The contemporary bathroom is finished to a high standard, featuring a stylish suite with a shower over the bath. Additional benefits include gas central heating and uPVC double glazing throughout, ensuring comfort and energy efficiency all year round.

Externally, the property boasts a south facing landscaped rear garden that is both enclosed and private, providing the perfect setting for alfresco dining, children's play or simply unwinding in the sunshine.

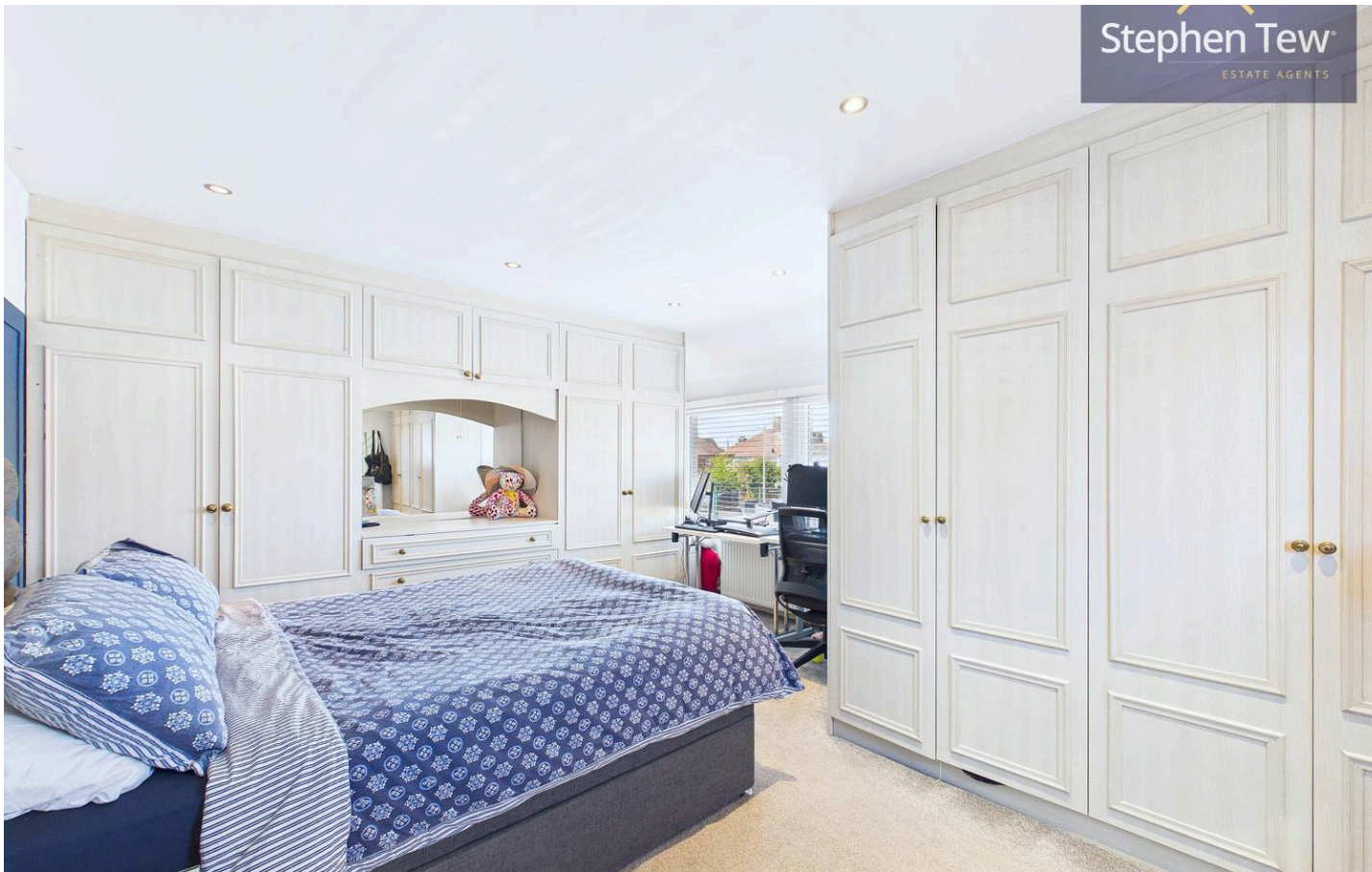
A driveway to the front of the house provides off road parking and leads to a detached garage (with power, light and water), ideal for secure storage, a workshop or utility purposes. The property's exterior spaces combine practicality with attractive presentation, making this a wonderful home for those who appreciate both indoor comfort and outdoor enjoyment. Early viewing is highly recommended to fully appreciate the accommodation and delightful garden on offer.

Council Tax band: B

Tenure: Freehold

- Well Presented Semi Detached House in a popular residential location with South Facing Garden
- Entrance Vestibule, Lounge, Fitted Dining Kitchen
- 2 Bedrooms, Modern Bathroom
- Gas Central Heating, uPVC Double Glazing
- Driveway providing off road parking and access to Garage with power, light and water. Enclosed Landscaped South Facing Garden





Stephen Tew
ESTATE AGENTS

Entrance Vestibule
5' 11" x 1' 8" (1.80m x 0.52m)

Lounge
16' 3" x 16' 0" (4.96m x 4.88m)

Dining Kitchen
15' 10" x 10' 11" (4.82m x 3.32m)

First Floor Landing

Bedroom 1
16' 0" x 12' 11" (4.87m x 3.94m)

Bedroom 2
11' 9" x 8' 0" (3.57m x 2.45m)

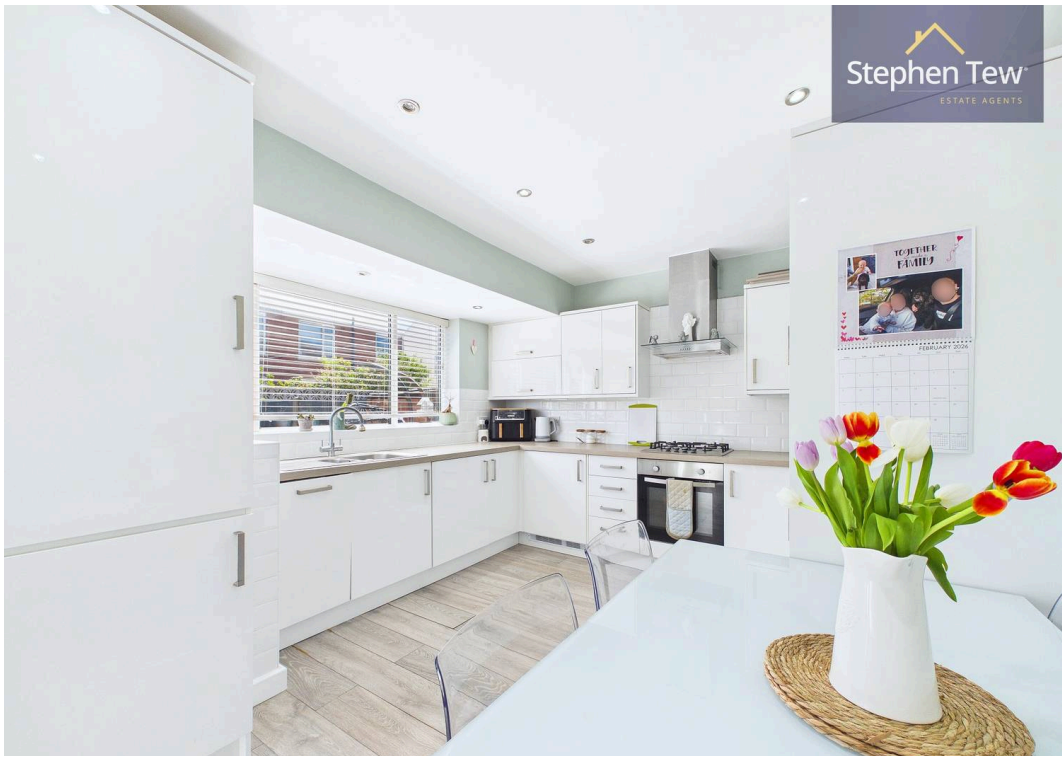
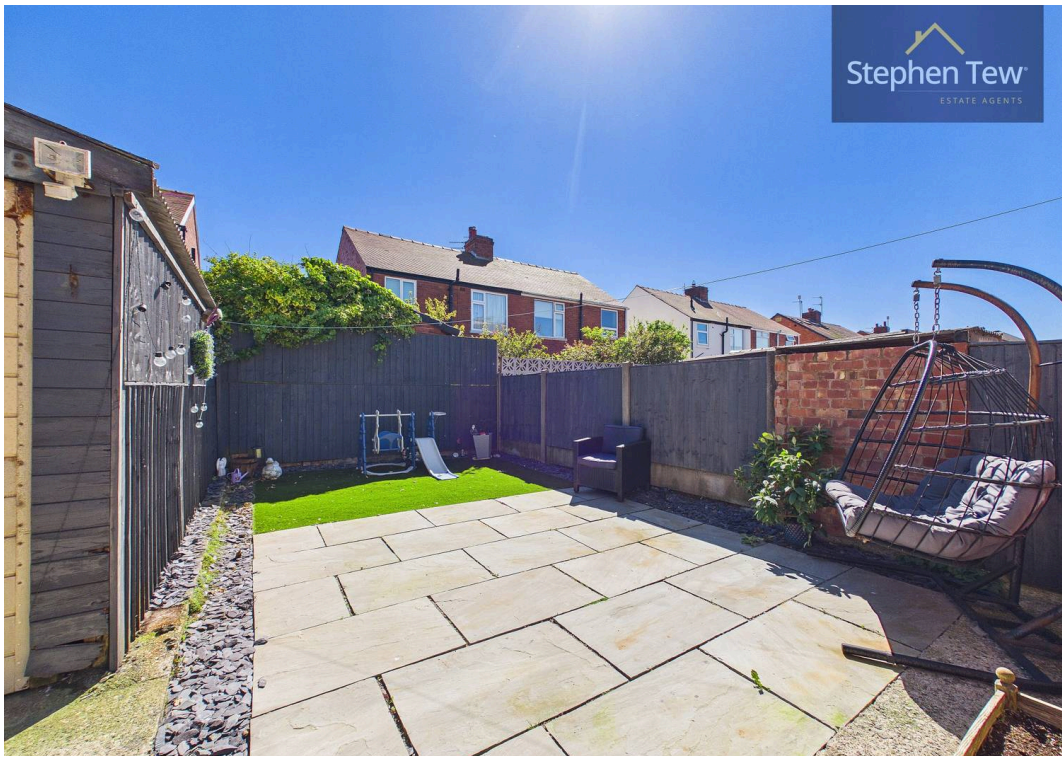
Bathroom
7' 5" x 5' 5" (2.27m x 1.64m)

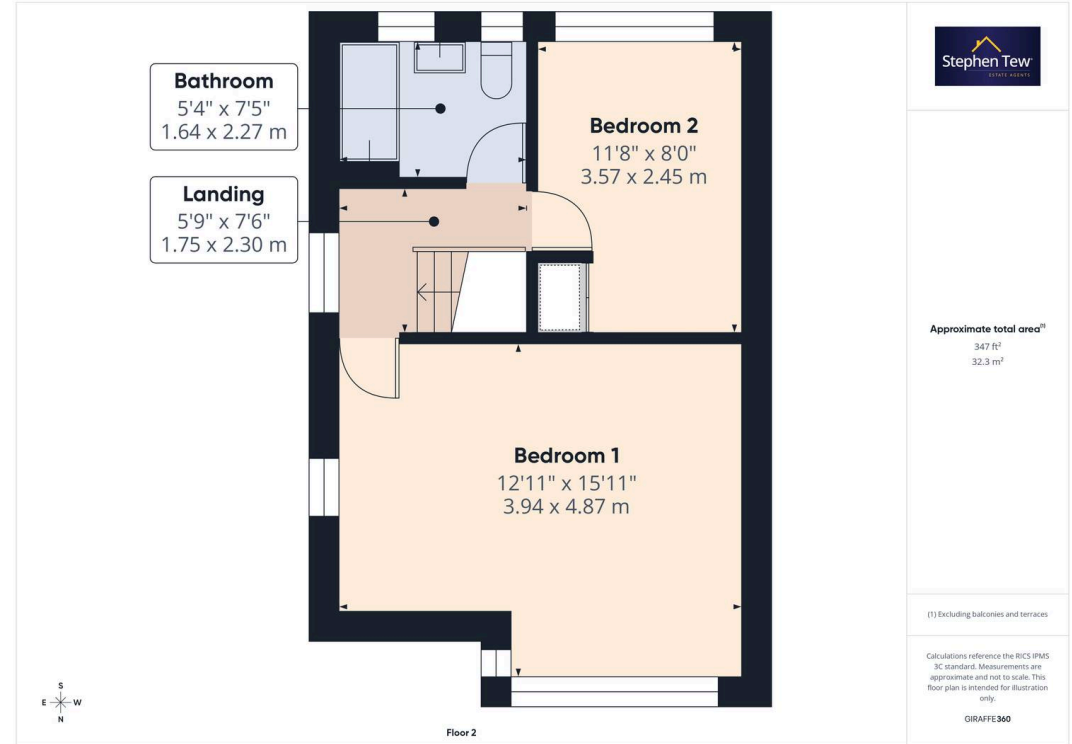


Stephen Tew
ESTATE AGENTS



Stephen Tew
ESTATE AGENTS







Stephen Tew Estate Agents

Stephen Tew Estate Agents, 132 Highfield Road - FY4 2HH

01253 401111

info@stephentew.co.uk

www.stephentew.co.uk

