



25 Boome Street, Blackpool

Blackpool

Offers Over **£80,000**

25 Boome Street

Blackpool, Blackpool

This two-bedroom mid-terraced house presents an excellent opportunity for buyers seeking a property to modernise and personalise. Situated in a popular residential location close to Highfield Road, the house offers a traditional layout with well-proportioned rooms throughout. Upon entering, you are greeted by an entrance hallway that leads into a spacious lounge, perfect for relaxing or entertaining guests. The adjoining dining room provides an ideal space for family meals or social gatherings, while the kitchen is positioned at the rear of the property and offers scope for improvement to suit your individual needs. Upstairs, there are two comfortable bedrooms and a family bathroom, all benefiting from gas central heating and uPVC double glazing for year-round comfort. The property is offered with no onward chain, making it an attractive prospect for first-time buyers, investors, or those looking to put their own stamp on a home. In addition the property has an EICR and Gas Certificate in place and a new boiler was installed in 2021.

Outside, the property features an enclosed rear garden that provides a private outdoor space for relaxation or recreation. The house is set back from the road, with on-street parking available to the front. The location is within easy reach of local shops, schools, and amenities, as well as public transport links, making it a convenient base for commuting or exploring the surrounding area. With its potential for improvement and sought-after position, this property represents a rare chance to acquire a home with both character and promise. Early viewing is recommended to appreciate the possibilities on offer.

Council Tax band: B

Tenure: Freehold

- Mid Terrace House situated in a popular residential location close to Highfield Road
- Entrance Hallway, Lounge, Dining Room, Kitchen
- 2 Bedrooms, Bathroom, Gas Central Heating, uPVC Double Glazing
- Enclosed Rear Garden, No onward Chain
- Requires Modernising
- Property has an EICR and Gas Certificate in place and a new boiler was installed in 2021





Entrance Hallway
12' 11" x 3' 0" (3.93m x 0.92m)

Lounge
13' 2" x 8' 11" (4.02m x 2.72m)

Dining Room
12' 5" x 13' 5" (3.79m x 4.09m)

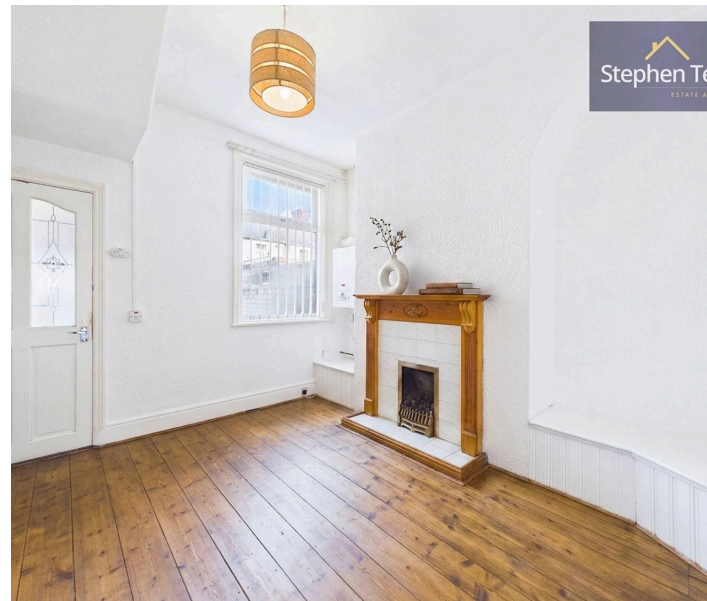
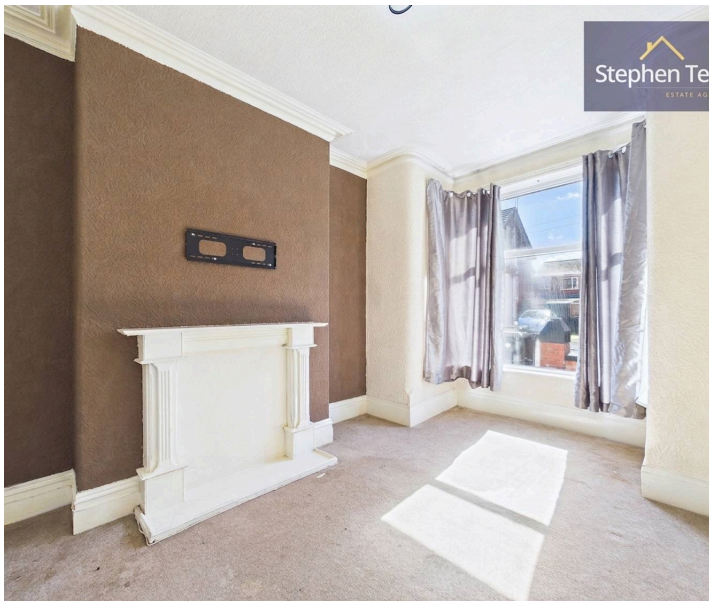
Kitchen
7' 5" x 7' 5" (2.27m x 2.26m)

Landing
9' 2" x 5' 9" (2.79m x 1.75m)

Bedroom 1
10' 1" x 11' 11" (3.08m x 3.63m)

Bedroom 2
12' 5" x 7' 6" (3.78m x 2.29m)

Bathroom
7' 4" x 7' 4" (2.24m x 2.23m)





Entrance Hallway
12' 11" x 3' 0" (3.93m x 0.92m)

Lounge
13' 2" x 8' 11" (4.02m x 2.72m)

Dining Room
12' 5" x 13' 5" (3.79m x 4.09m)

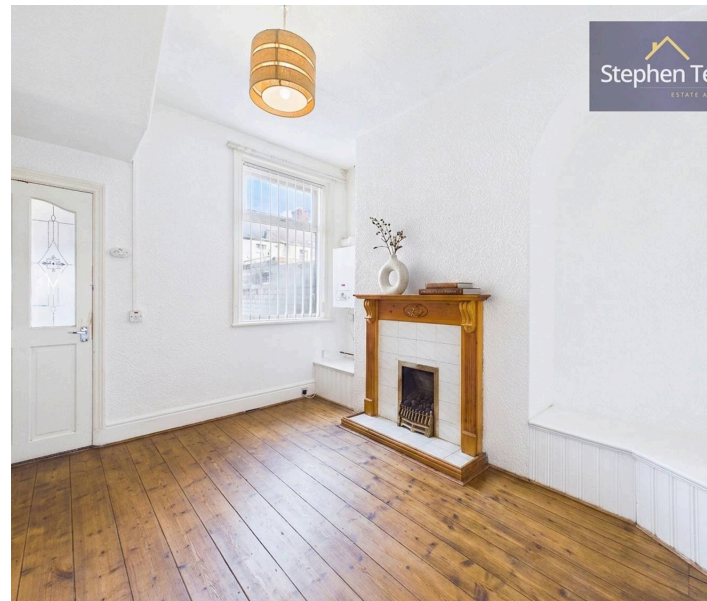
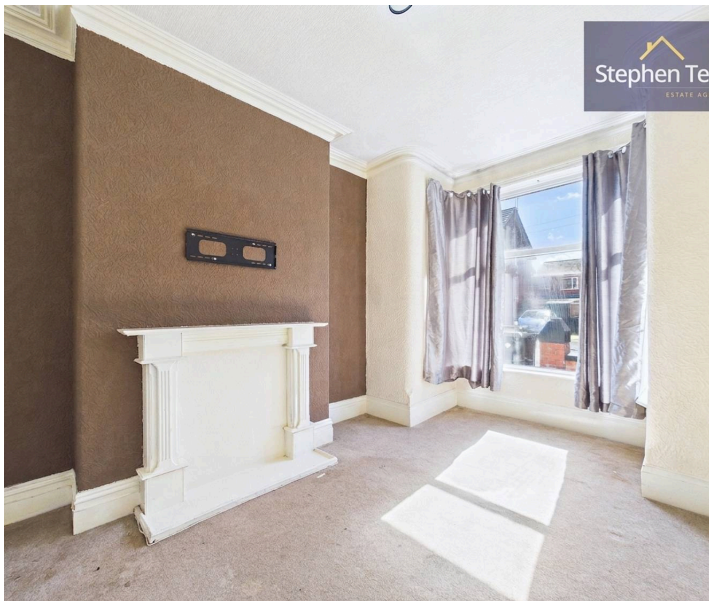
Kitchen
7' 5" x 7' 5" (2.27m x 2.26m)

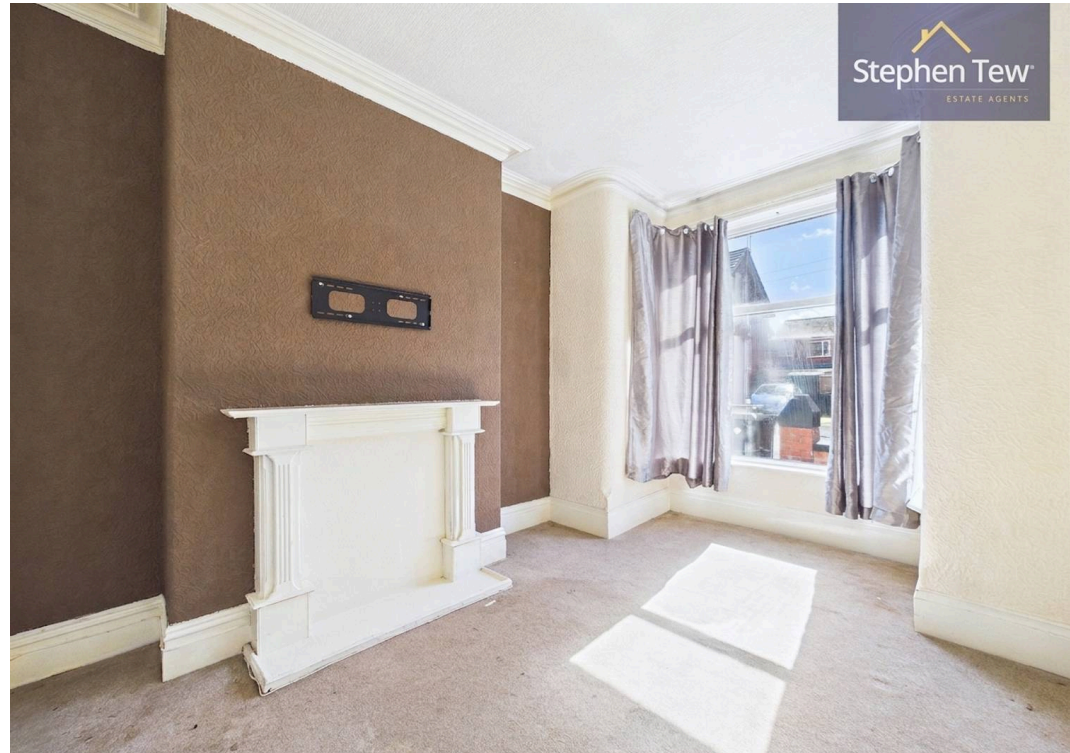
Landing
9' 2" x 5' 9" (2.79m x 1.75m)

Bedroom 1
10' 1" x 11' 11" (3.08m x 3.63m)

Bedroom 2
12' 5" x 7' 6" (3.78m x 2.29m)

Bathroom
7' 4" x 7' 4" (2.24m x 2.23m)







FRONT GARDEN

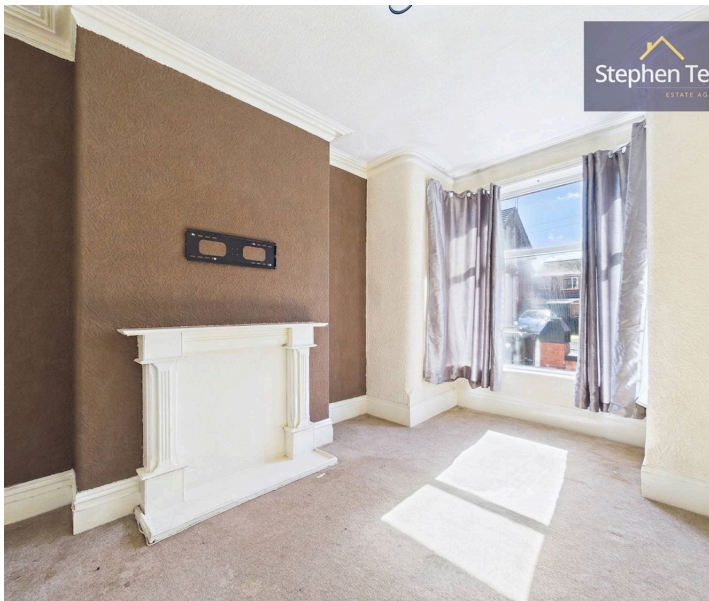
Small enclosed front garden area.

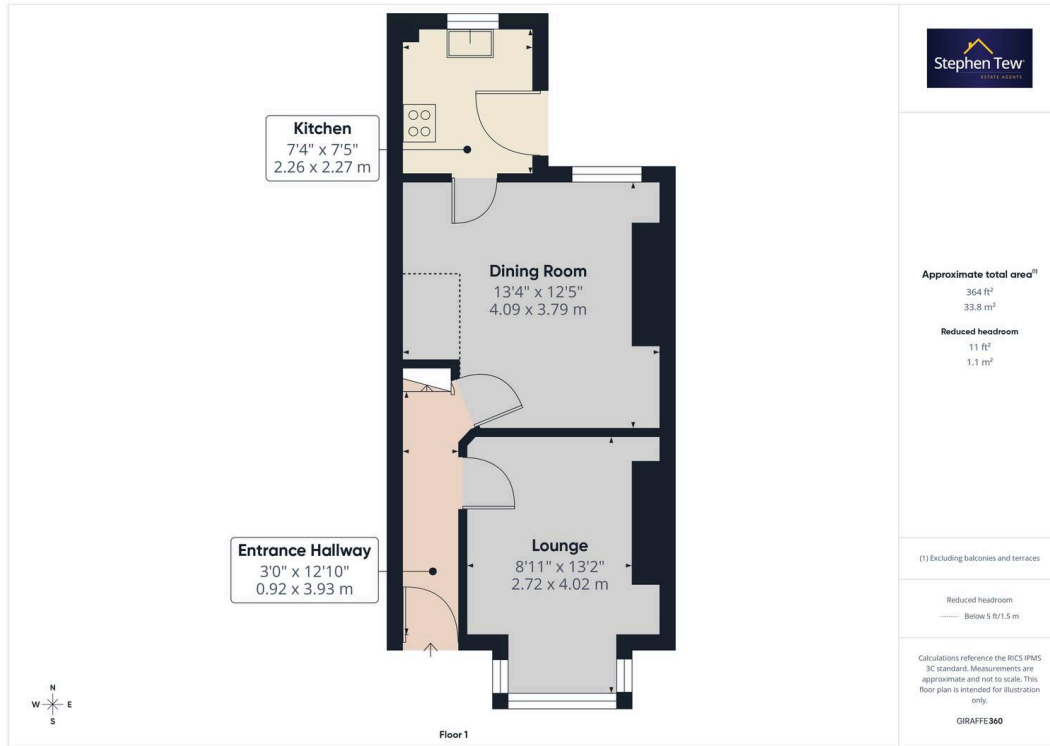
REAR GARDEN

Enclosed paved yard with gated access.

ON STREET

1 Parking Space







Stephen Tew Estate Agents

Stephen Tew Estate Agents, 132 Highfield Road - FY4 2HH

01253 401111

info@stephentew.co.uk

www.stephentew.co.uk

