



8 Mayfield Avenue, Blackpool

Blackpool

£595 pcm

8 Mayfield Avenue

Blackpool, Blackpool

This beautifully renovated one bedroom flat is situated on the first floor of a converted property, offering modern living in a highly convenient location just off Highfield Road. Finished to a high standard throughout, the flat features a spacious living area that seamlessly blends comfort and style. The newly installed gas central heating system and double glazing ensure warmth and energy efficiency all year round. The contemporary kitchen is designed with both functionality and aesthetics in mind, providing ample storage and workspace. The generously sized bedroom offers a peaceful retreat, while the modern shower room boasts a large walk-in shower for a touch of luxury. With its fresh décor and quality fittings, this property is ready to move into and provides an ideal home for professionals or couples seeking easy access to local amenities, shops, and transport links. The flat's thoughtful layout maximises space and natural light, creating an inviting atmosphere throughout. This is a fantastic opportunity to acquire a stylish, low-maintenance home in a sought-after area, perfect for those looking to enjoy the benefits of a central location with all the comforts of a newly refurbished property. Early viewing is highly recommended to fully appreciate all that this flat has to offer.

Council Tax band: A

Tenure: Freehold

- Fully renovated 1 bedroom flat
- 1st floor in converted property
- Completed to a high standard
- New Gas central heating & is also double glazed
- modern shower room with large walk in shower
- Just off Highfield Road so very convenient for local amenities





Stephen Tew
ESTATE AGENTS

Lounge
12' 1" x 13' 9" (3.68m x 4.19m)

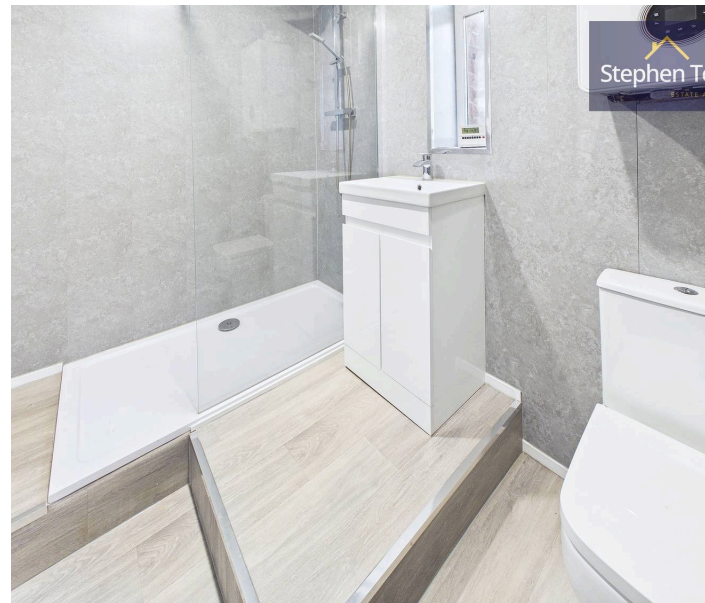
Kitchen
6' 9" x 8' 11" (2.05m x 2.73m)

Bedroom
15' 7" x 9' 6" (4.76m x 2.89m)

Shower Room
5' 4" x 5' 10" (1.62m x 1.79m)



Stephen Tew
ESTATE AGENTS



Stephen Tew
ESTATE AGENTS



Stephen Tew
ESTATE AGENTS

Lounge
12' 1" x 13' 9" (3.68m x 4.19m)

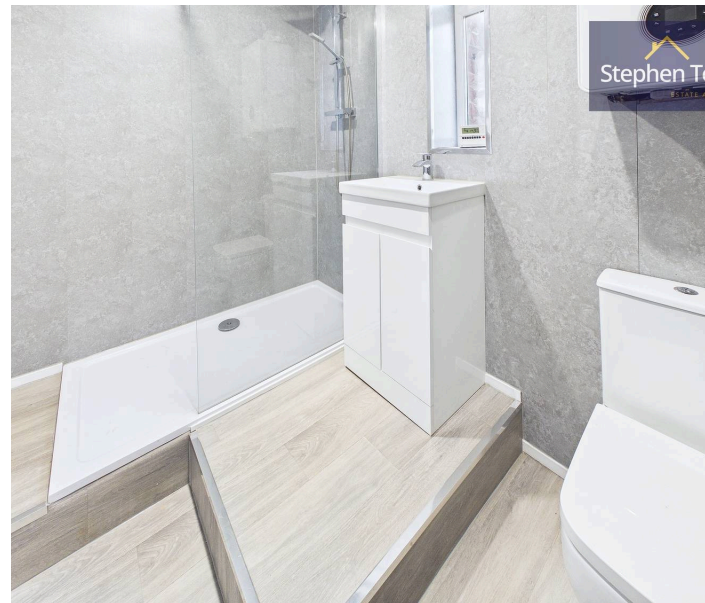
Kitchen
6' 9" x 8' 11" (2.05m x 2.73m)

Bedroom
15' 7" x 9' 6" (4.76m x 2.89m)

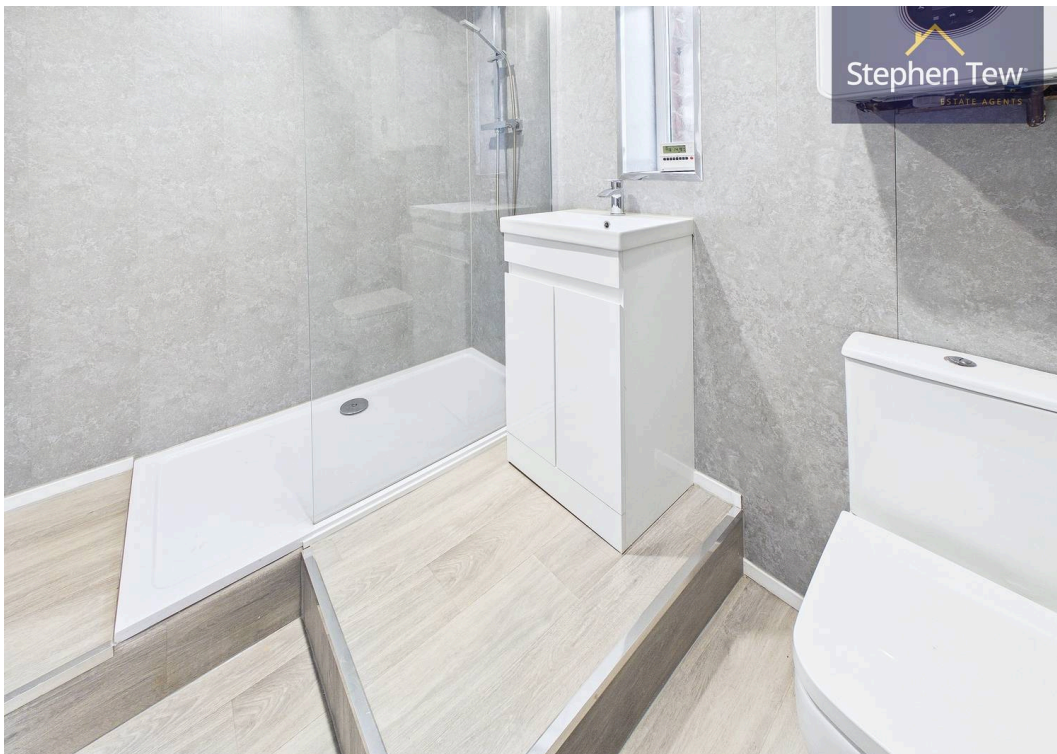
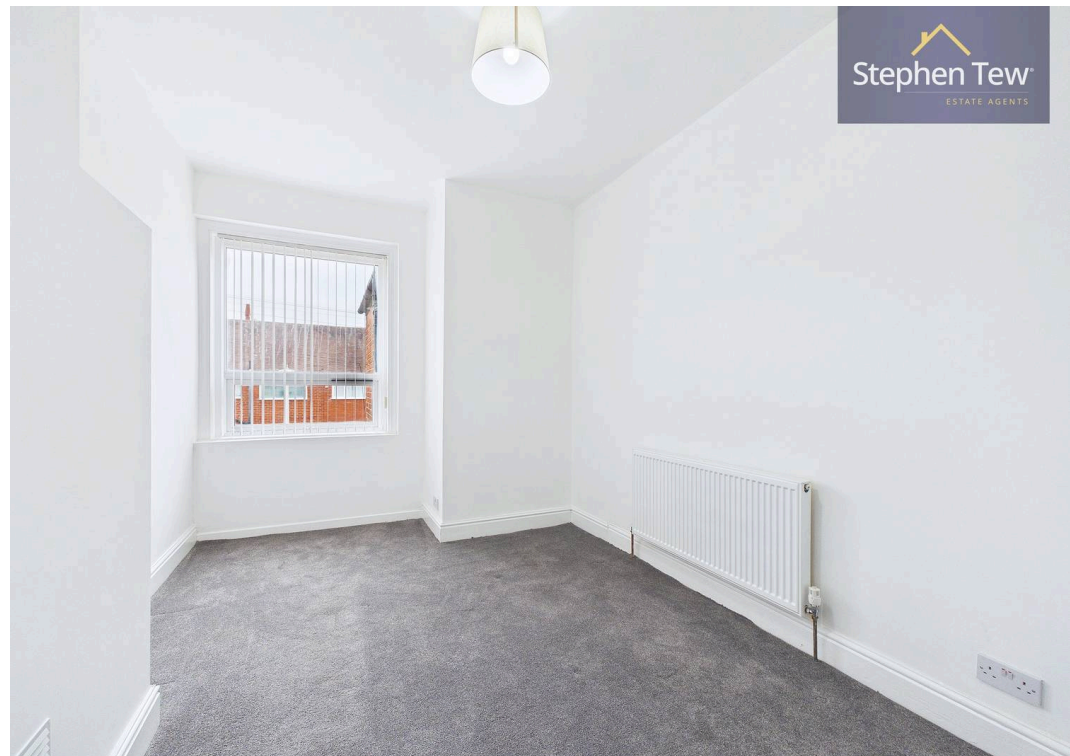
Shower Room
5' 4" x 5' 10" (1.62m x 1.79m)



Stephen Tew
ESTATE AGENTS



Stephen Tew
ESTATE AGENTS









Stephen Tew Estate Agents

Stephen Tew Estate Agents, 132 Highfield Road - FY4 2HH

01253 401111

info@stephentew.co.uk

www.stephentew.co.uk

