



Flat 32, Crescent Court Promenade, Blackpool

Blackpool

Offers Over £125,000

Flat 32

Crescent Court Promenade, Blackpool

We are pleased to present this immaculate recently renovated 2 Bedroom Flat situated on the picturesque Blackpool seafront.

This charming property boasts a convenient location, providing easy access to local amenities and excellent transport links to the vibrant town centre.

The interior has been tastefully designed to offer a modern and comfortable living space, making it an ideal choice for those seeking a contemporary seaside retreat with amazing sea views.

Upon stepping inside this delightful flat, you enter the spacious hallway with useful understairs storage cupboard after which you are greeted by a bright and airy living room, perfect for relaxing or entertaining guests.

This room also boasts incredible views over the Irish Sea. The recently upgraded kitchen features sleek countertops and ample storage space, catering to your culinary needs.

The kitchen includes a double oven, induction hob, extractor fan, integrated dishwasher and insinkerator waste disposal. The larder kitchen unit is extremely useful and provides ample storage including additional hidden drawers.

The landing at the top of the stairs houses the full height airing cupboard and gives access to the two well-appointed bedrooms offering a peaceful sanctuary for relaxation ensuring a restful night's sleep.

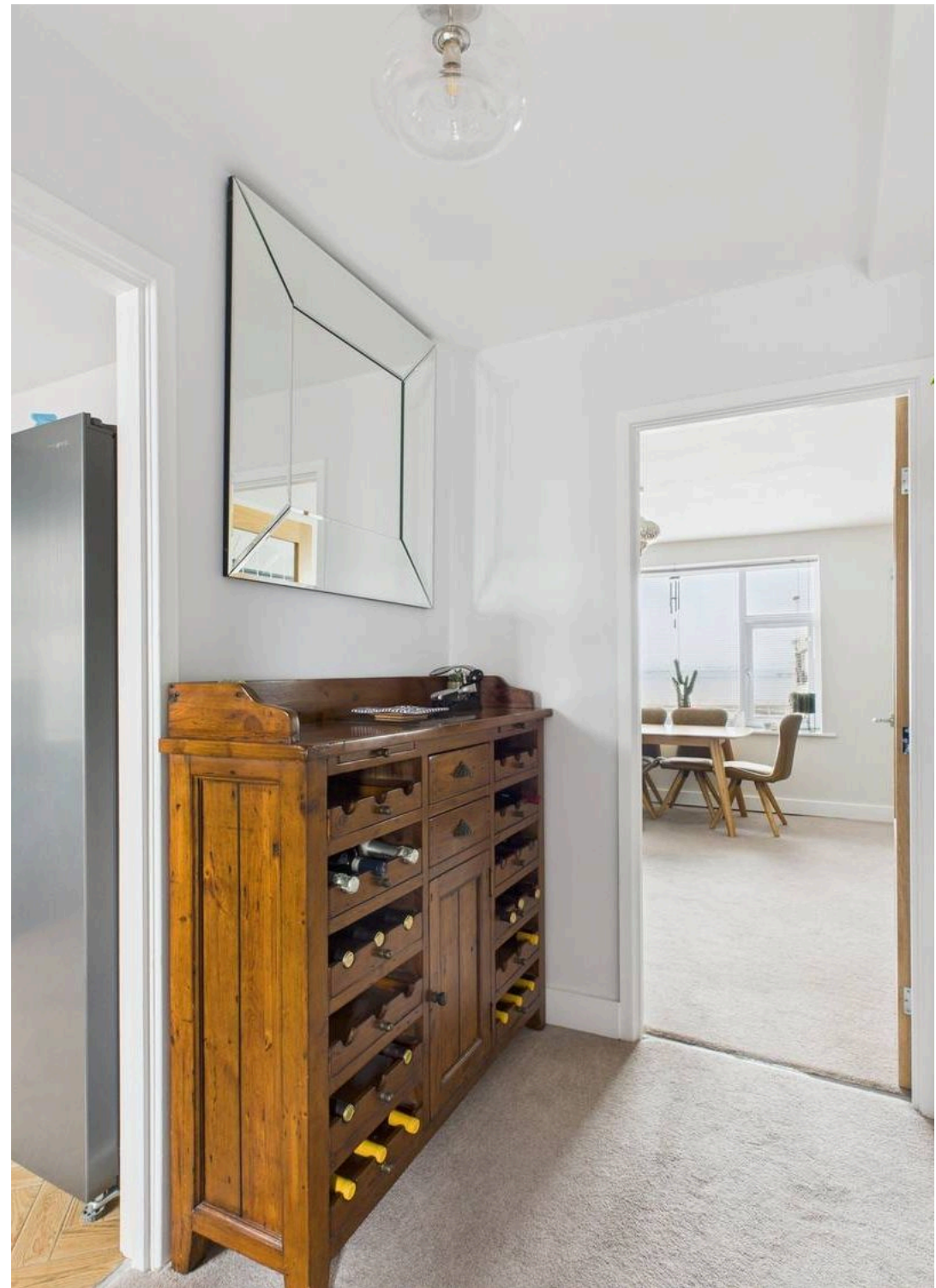
The master bedroom benefits from fitted wardrobes and enjoys the same views as the living room.

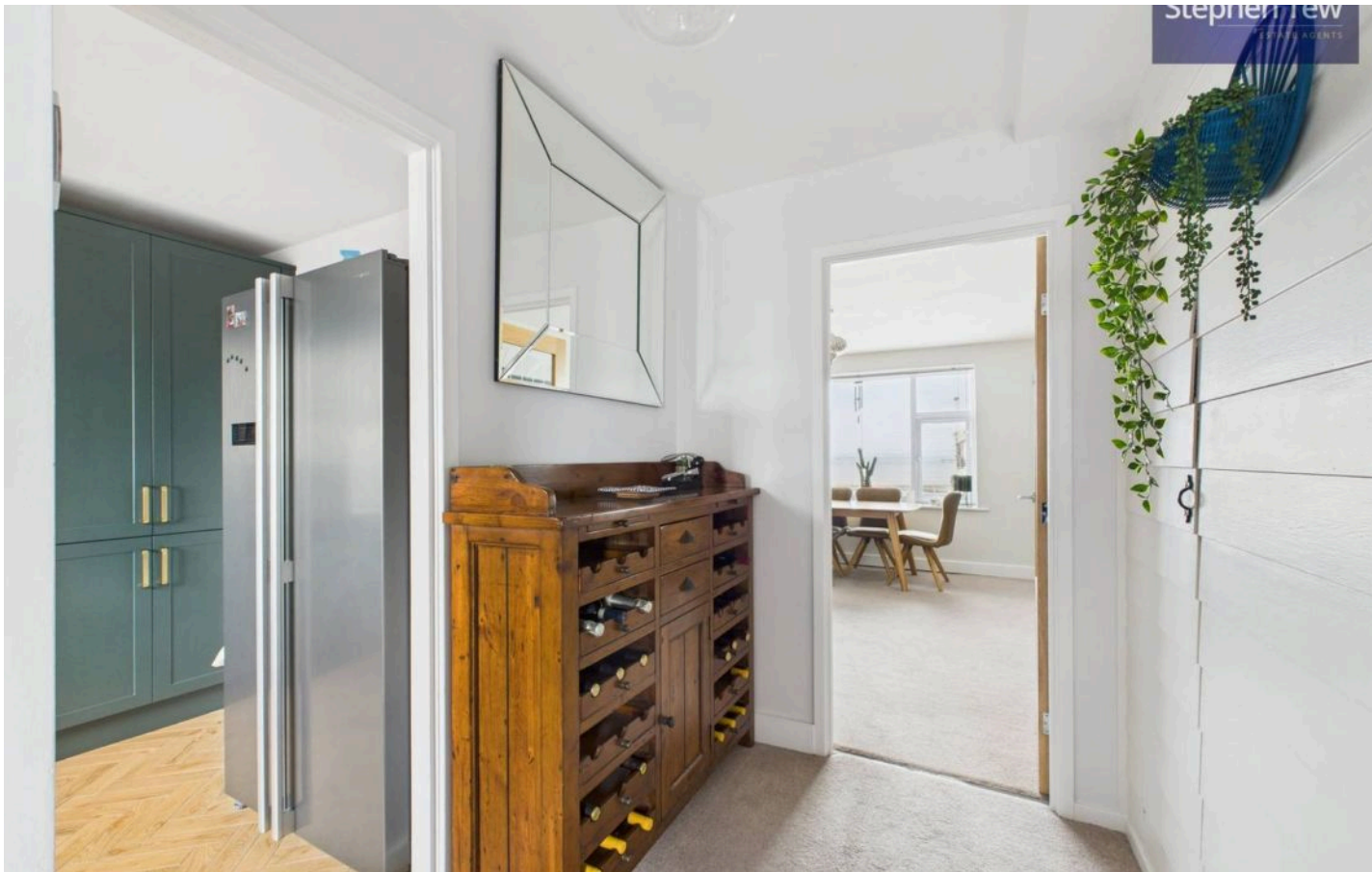
The property also benefits from a stylish bathroom complete with modern fixtures and fittings for added convenience.

This includes a high rise WC, extended floating sink unit and a walk in shower.

There is also a heated towel rail and a de-mister mirror with touch lighting. Additionally, the flat is equipped with concealed skirting board central heating to keep you warm and cosy during the cooler months.

Outside, residents can enjoy access to a communal garden area, providing a tranquil space to unwind amidst the fresh sea breeze.





Hallway

12' 11" x 5' 11" (3.94m x 1.80m)

Living Room/Dining Room

13' 3" x 16' 8" (4.05m x 5.07m)

Kitchen

11' 2" x 10' 8" (3.41m x 3.26m)

Bedroom 1

13' 7" x 16' 8" (4.14m x 5.09m)

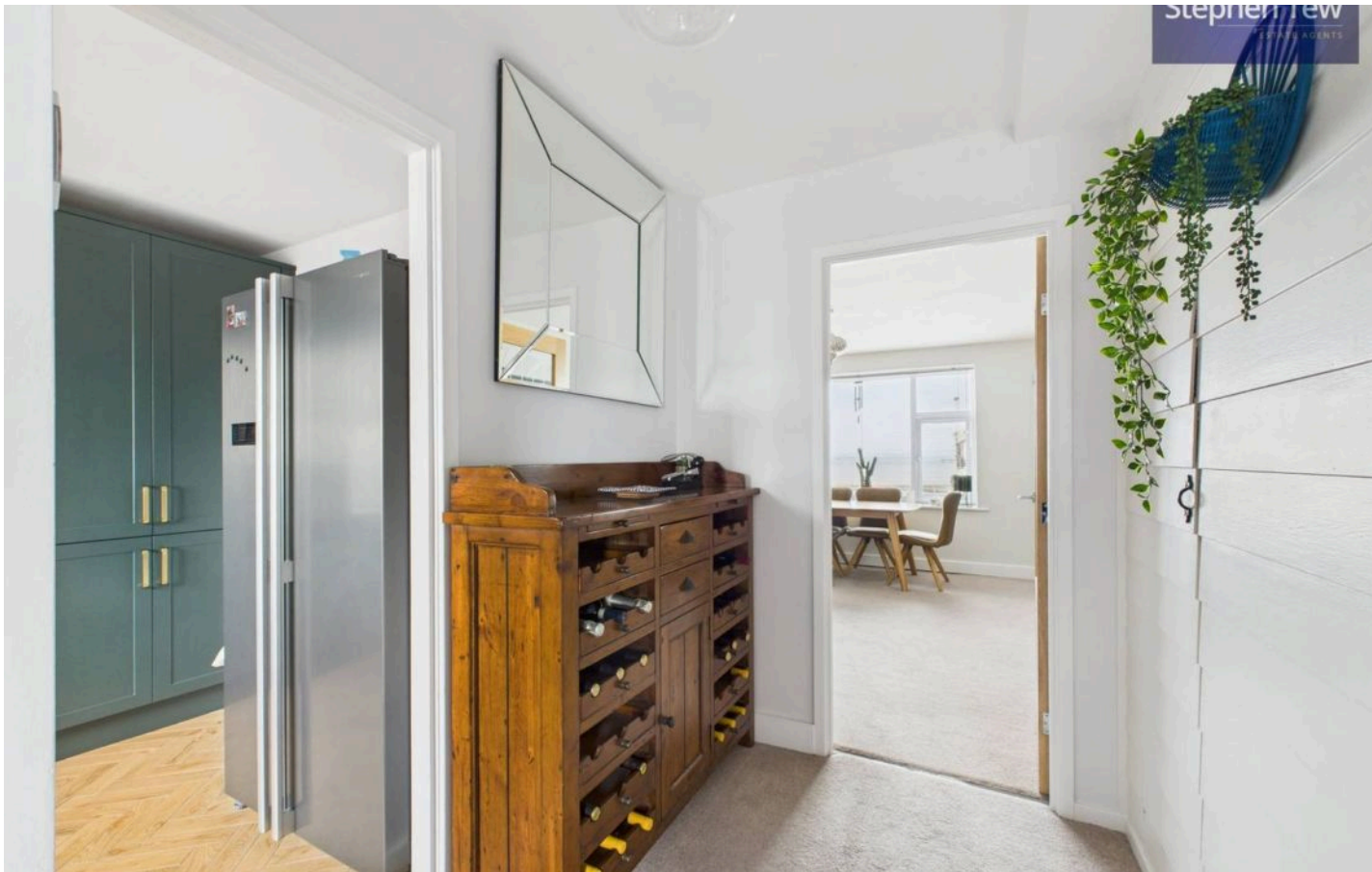
Bedroom 2

12' 11" x 8' 1" (3.94m x 2.47m)

Bathroom

5' 4" x 8' 5" (1.62m x 2.56m)





Hallway

12' 11" x 5' 11" (3.94m x 1.80m)

Living Room/Dining Room

13' 3" x 16' 8" (4.05m x 5.07m)

Kitchen

11' 2" x 10' 8" (3.41m x 3.26m)

Bedroom 1

13' 7" x 16' 8" (4.14m x 5.09m)

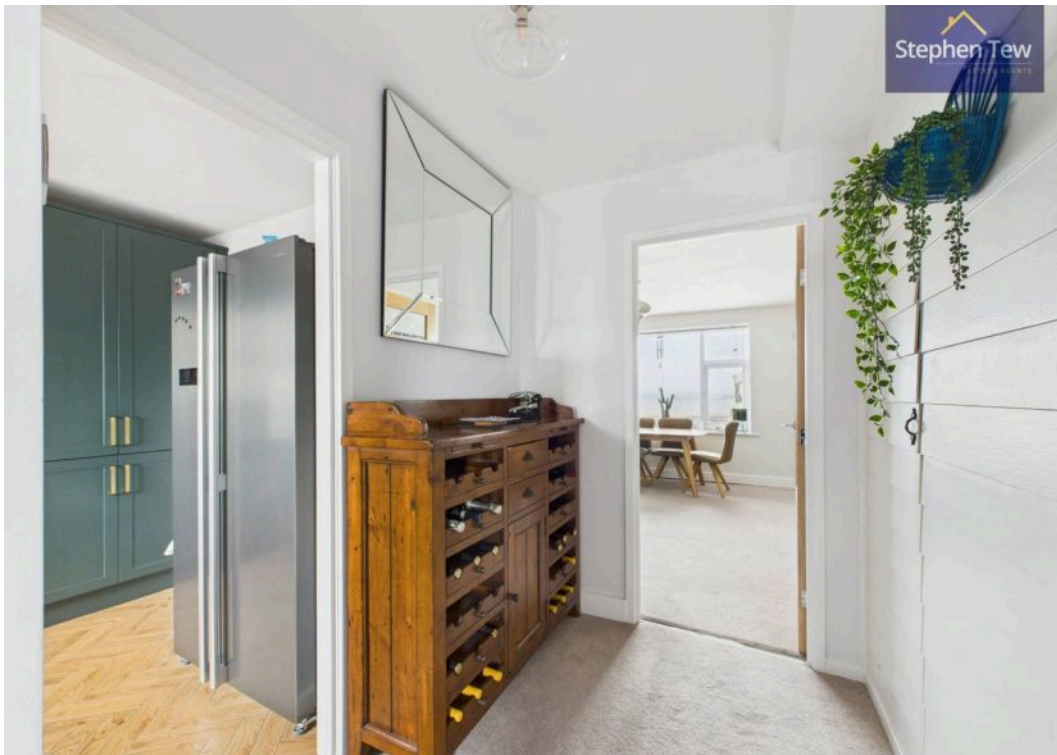
Bedroom 2

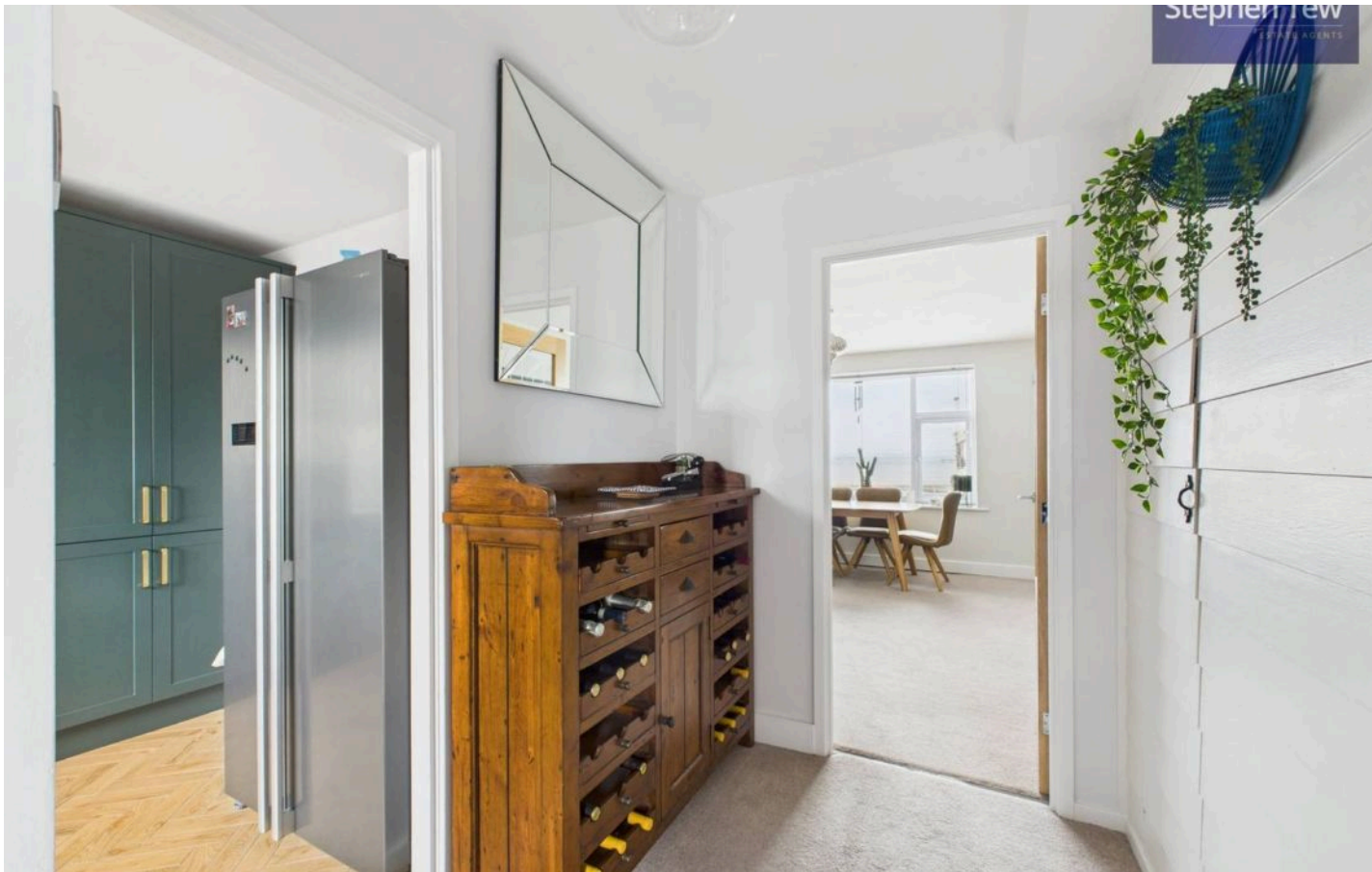
12' 11" x 8' 1" (3.94m x 2.47m)

Bathroom

5' 4" x 8' 5" (1.62m x 2.56m)

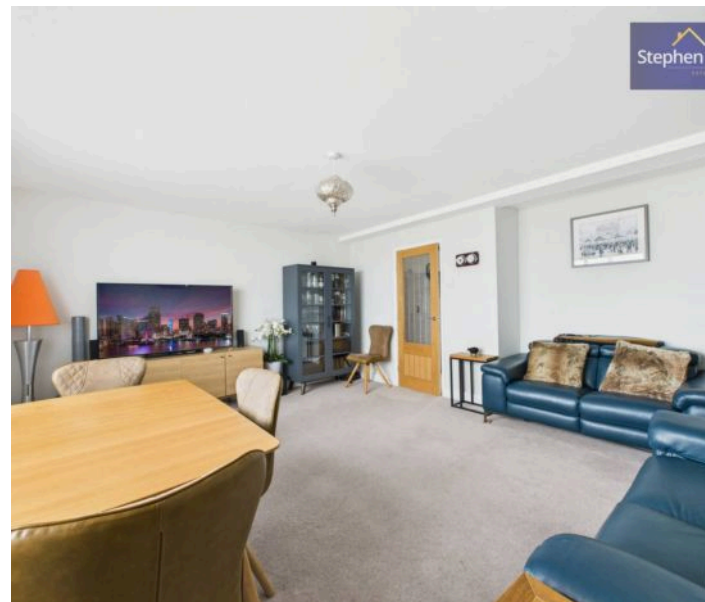






COMMUNAL GARDEN

ON STREET





Floor 1



Floor 2



Approximate total area⁽¹⁾

852 ft²

79.2 m²

Balconies and terraces

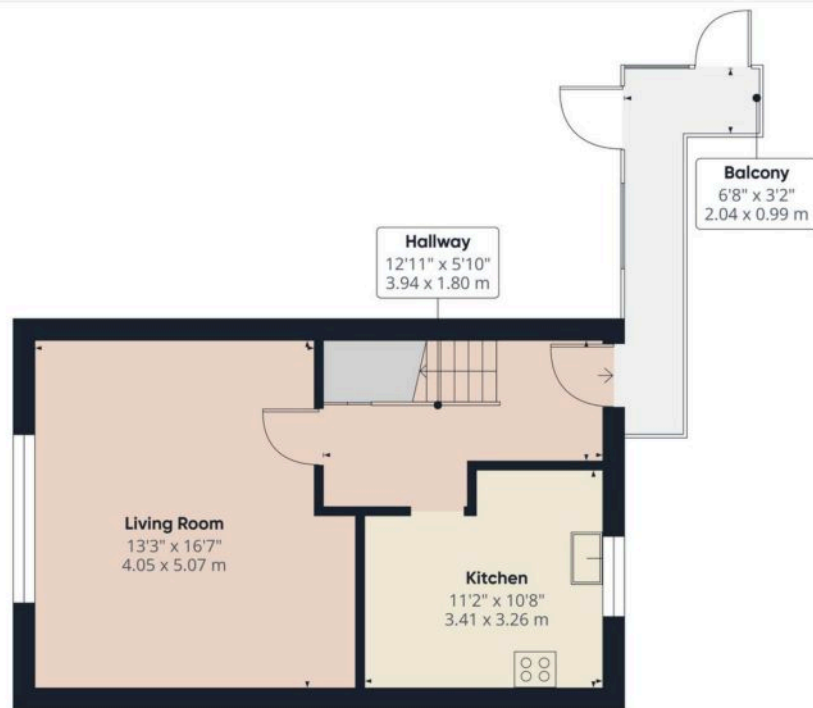
65 ft²

6 m²

(1) Excluding balconies and terraces

Calculations reference the RICS IPMS 3C standard. Measurements are approximate and not to scale. This floor plan is intended for illustration only.

DISAFL360



Floor 1



Approximate total area⁽¹⁾

440 ft²

40.9 m²

Balconies and terraces

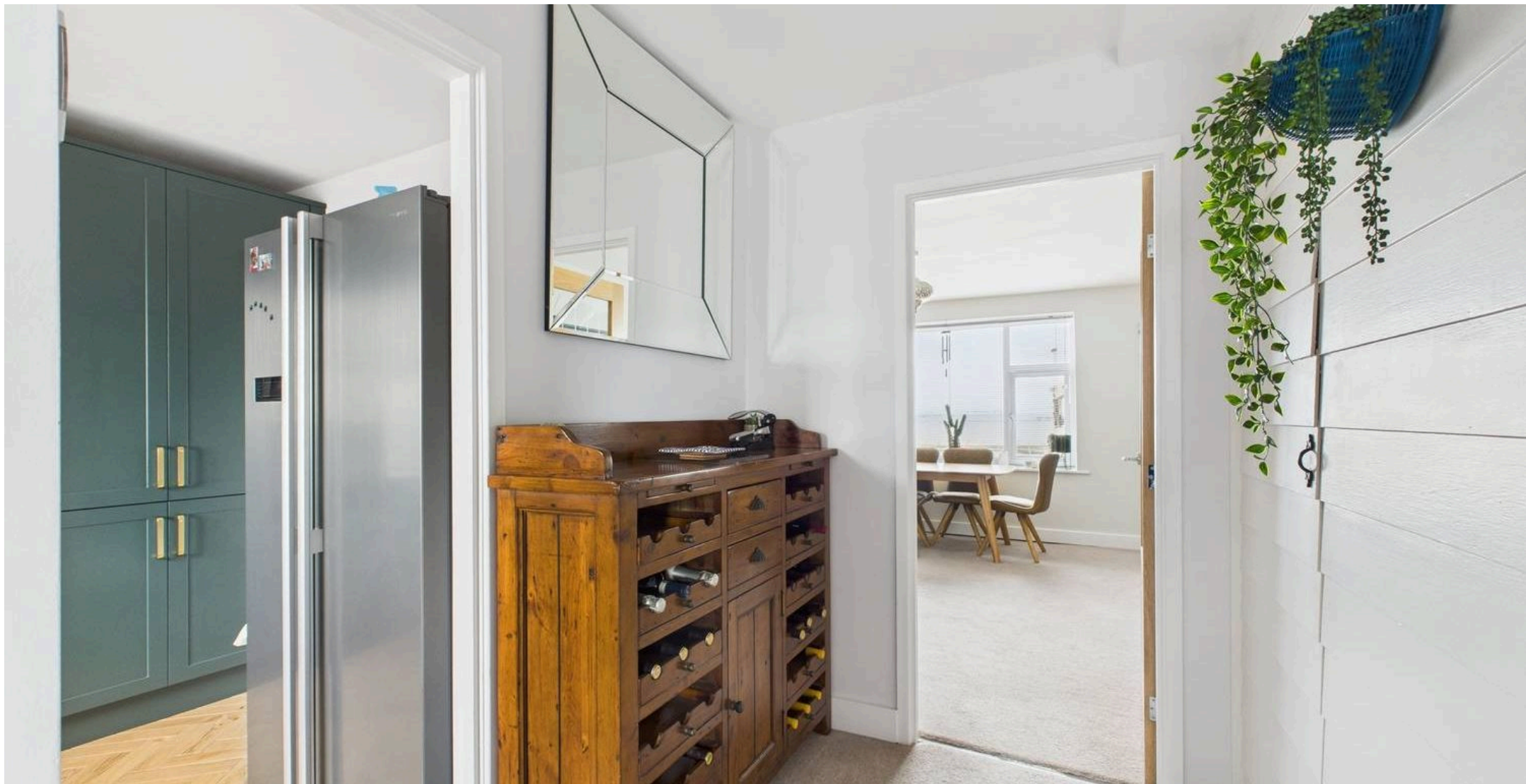
65 ft²

6 m²

(1) Excluding balconies and terraces

Calculations reference the RICS IPMS 3C standard. Measurements are approximate and not to scale. This floor plan is intended for illustration only.

DISAFL360



Stephen Tew Estate Agents

Stephen Tew Estate Agents, 132 Highfield Road - FY4 2HH

01253 401111

info@stephentew.co.uk

www.stephentew.co.uk

