



17 Deeside, Blackpool

Blackpool

Offers Over £190,000



# 17 Deeside

Blackpool, Blackpool

Nestled in a sought-after residential area stands this charming 3-bedroom detached house, a true embodiment of modern living. Upon entering this detached property, one is immediately greeted by an inviting open entrance leading to a welcoming terrace. The ground floor boasts a spacious lounge, ideal for both relaxation and entertainment, a well-appointed kitchen for culinary enthusiasts, a study for a home office or quiet reading nook, and a convenient downstairs WC for added comfort. Ascending the stairs, the first floor unveils three tranquil bedrooms offering peace and privacy, along with a pristine bathroom for unwinding after a long day. With its thoughtfully designed layout and contemporary finishes, this residence presents a harmonious blend of style and functionality, appealing to those in search of a new place to call home.

Outside, this property continues to impress with its generously sized garden, providing ample space for outdoor activities, al-fresco dining, or simply basking in the fresh air. The property's outdoor area, perfect for hosting gatherings or enjoying peaceful moments in nature, offers endless possibilities for creating unforgettable memories with loved ones. Whether it's a leisurely weekend barbeque, a lively garden party, or a serene retreat from the hustle and bustle of daily life, the enchanting outdoor space of this residence caters to a variety of lifestyles and preferences. Embrace the tranquillity and charm of the outdoors right at your doorstep, making this property a haven of relaxation and enjoyment amidst a bustling neighbourhood. In summary, this property's exquisite interior and enchanting exterior harmonise to create a residence that exudes warmth, comfort, and a sense of belonging, making it a truly special place to call your own.

Council Tax band: D

Tenure: Freehold

- Detached property set in a popular residential location comprising of an open entrance and terrace with a spacious lounge, kitchen, study and a downstairs WC with 3 bedrooms and a bathroom







## Entry

### Terrace

7' 10" x 7' 11" (2.40m x 2.41m)

### Living Room

11' 8" x 19' 3" (3.56m x 5.87m)

### Hallway

16' 10" x 8' 4" (5.12m x 2.55m)

### Kitchen

16' 8" x 7' 1" (5.09m x 2.17m)

### Study

10' 2" x 9' 8" (3.10m x 2.94m)

### Toilet

### Landing

### Bedroom 1

11' 11" x 14' 4" (3.62m x 4.37m)

### Bedroom 2

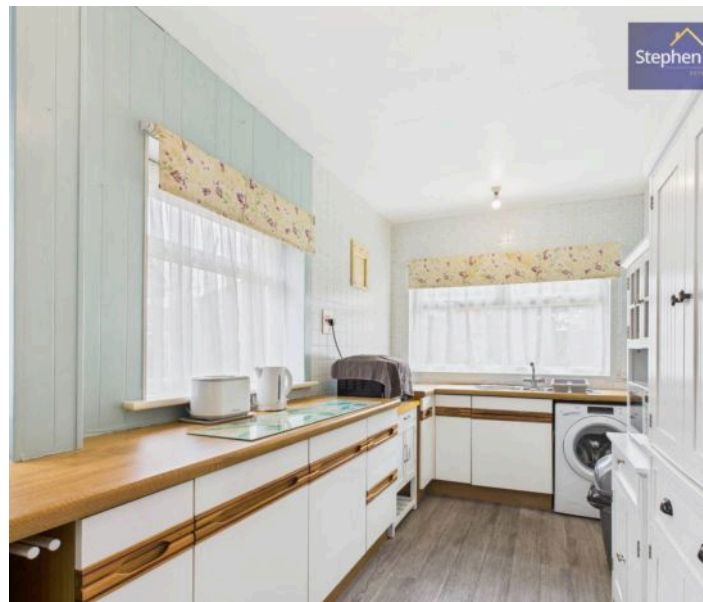
7' 3" x 7' 11" (2.21m x 2.41m)

### Bedroom 3

10' 1" x 9' 5" (3.07m x 2.87m)

### Bathroom

10' 8" x 5' 7" (3.25m x 1.70m)







## Entry

### Terrace

7' 10" x 7' 11" (2.40m x 2.41m)

### Living Room

11' 8" x 19' 3" (3.56m x 5.87m)

### Hallway

16' 10" x 8' 4" (5.12m x 2.55m)

### Kitchen

16' 8" x 7' 1" (5.09m x 2.17m)

### Study

10' 2" x 9' 8" (3.10m x 2.94m)

### Toilet

### Landing

### Bedroom 1

11' 11" x 14' 4" (3.62m x 4.37m)

### Bedroom 2

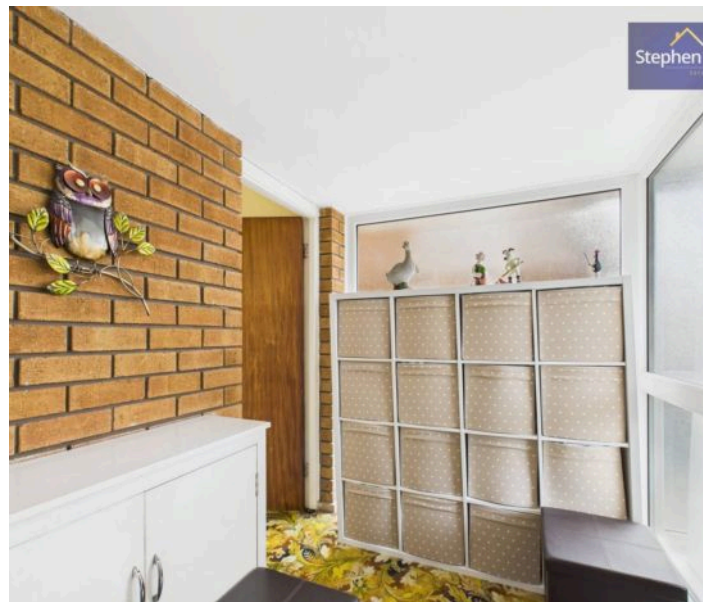
7' 3" x 7' 11" (2.21m x 2.41m)

### Bedroom 3

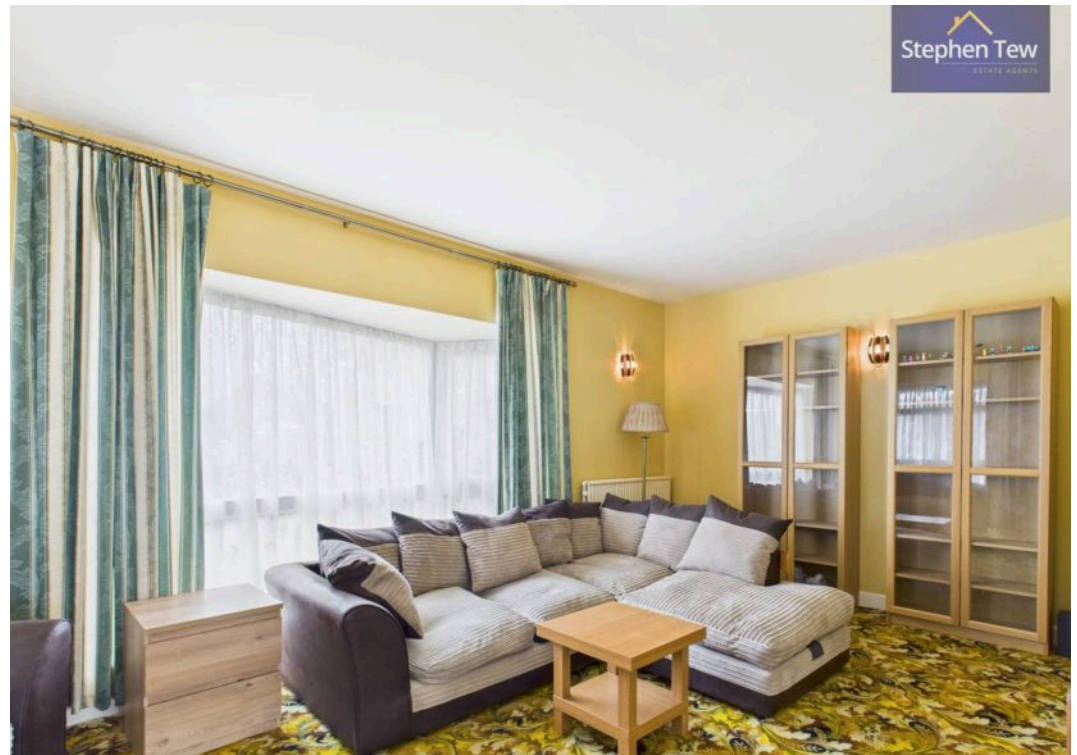
10' 1" x 9' 5" (3.07m x 2.87m)

### Bathroom

10' 8" x 5' 7" (3.25m x 1.70m)











**GARDEN**

**GARAGE**

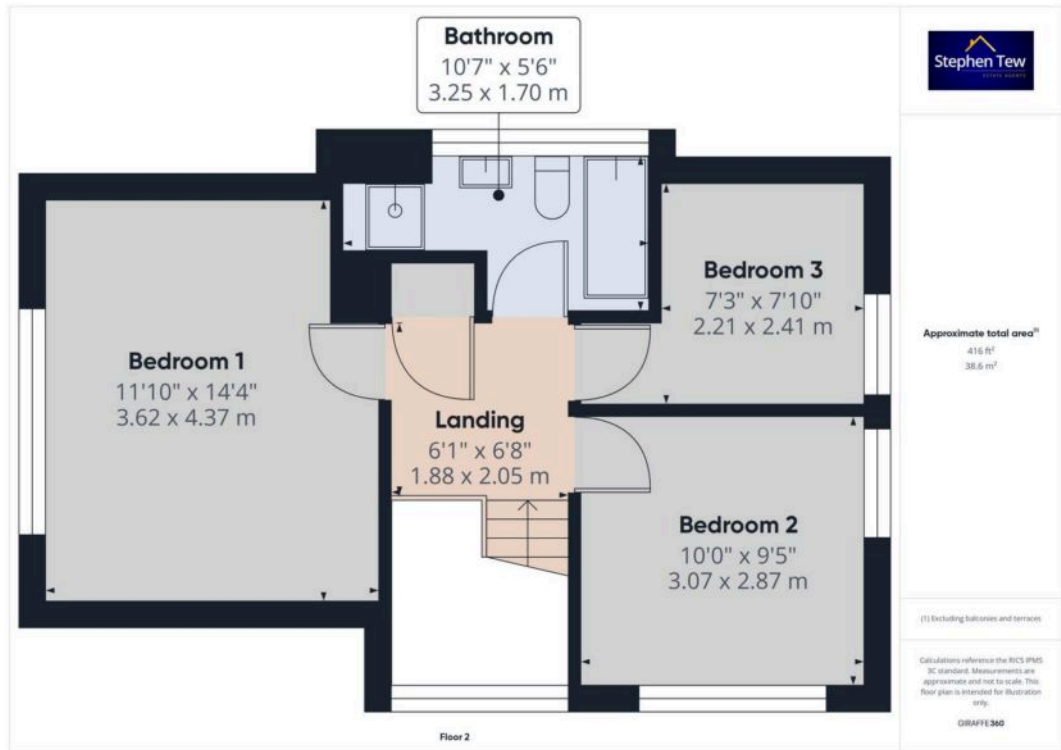
Single Garage

**DRIVEWAY**

2 Parking Spaces

**ON STREET**









## Stephen Tew Estate Agents

Stephen Tew Estate Agents, 132 Highfield Road - FY4 2HH

01253 401111

[info@stephentew.co.uk](mailto:info@stephentew.co.uk)

[www.stephentew.co.uk](http://www.stephentew.co.uk)

