



60 Ivy Avenue, Blackpool

Blackpool

Offers Over £130,000



# 60 Ivy Avenue

Blackpool, Blackpool

This end of terrace house, with its own driveway, has been recently renovated to an exceptionally high standard throughout. The property features a welcoming hallway leading to a bright lounge, open-plan kitchen, and a dining/living area. Upstairs, there are two well-appointed bedrooms and a modern three-piece suite bathroom. The house also benefits from a south-facing rear garden complete with outside lights, perfect for enjoying outdoor living. This property is offered with no onward chain, ensuring a smooth and hassle-free buying process. Renovations to the property include brand new windows, internal and external doors, carpets, radiators, full re-wiring, a fully updated kitchen and bathroom, fresh paintwork, new fences, and rendering to the rear, making it a truly turn-key home.

Council Tax band: A

Tenure: Freehold

- End Of Terrace House With Driveway, Recently Renovated To A High Standard Throughout
- Hallway, Lounge, Open Plan Kitchen, Dining/ Living Area, Two Bedrooms, Three Piece Suite Bathroom
- South Facing Rear Garden With Outside Lights
- No Onward Chain
- Renovations Include New Windows, Internal And External Doors, Carpets, Radiators, Re-Wire, Kitchen, Bathroom, Re-Painted, Fences, Rendered To The Rear





### Hallway

### Lounge

10' 8" x 13' 0" (3.25m x 3.97m)

### Kitchen/ Living Area

13' 0" x 21' 6" (3.97m x 6.56m)

### Landing

### Bedroom 1

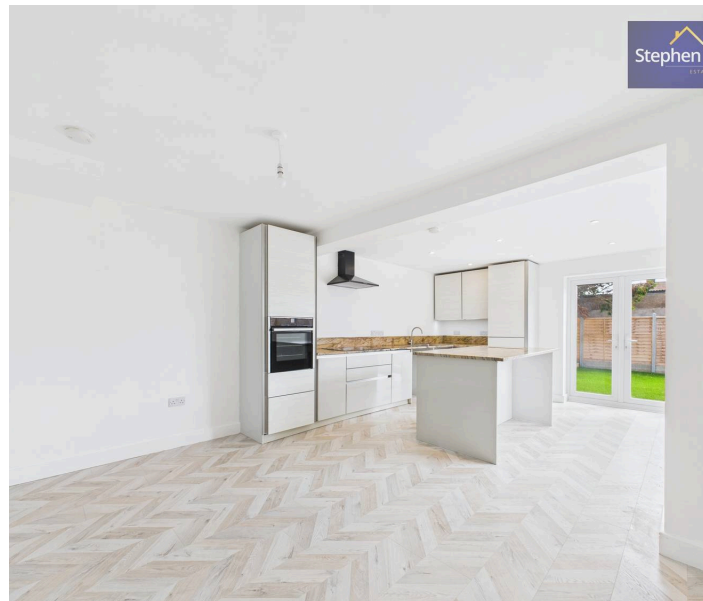
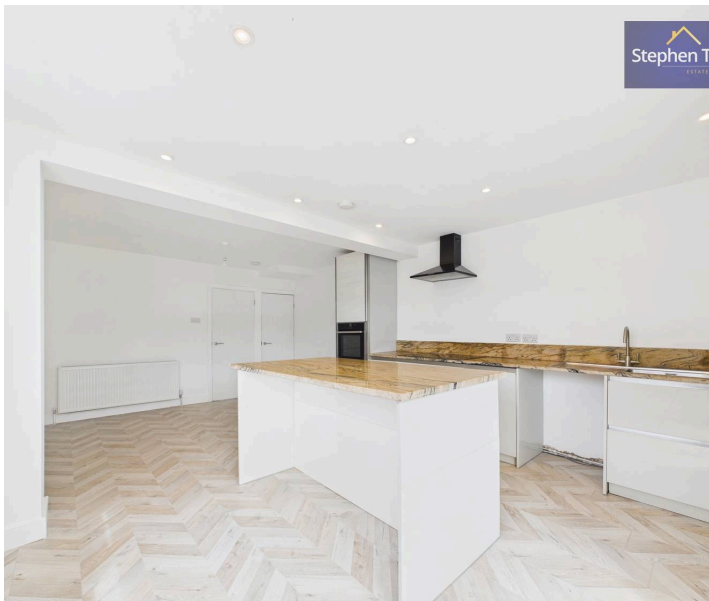
10' 9" x 13' 5" (3.27m x 4.10m)

### Bedroom 2

6' 8" x 9' 6" (2.04m x 2.90m)

### Bathroom

6' 5" x 6' 9" (1.96m x 2.05m)







## Hallway

## Lounge

10' 8" x 13' 0" (3.25m x 3.97m)

## Kitchen/ Living Area

13' 0" x 21' 6" (3.97m x 6.56m)

## Landing

## Bedroom 1

10' 9" x 13' 5" (3.27m x 4.10m)

## Bedroom 2

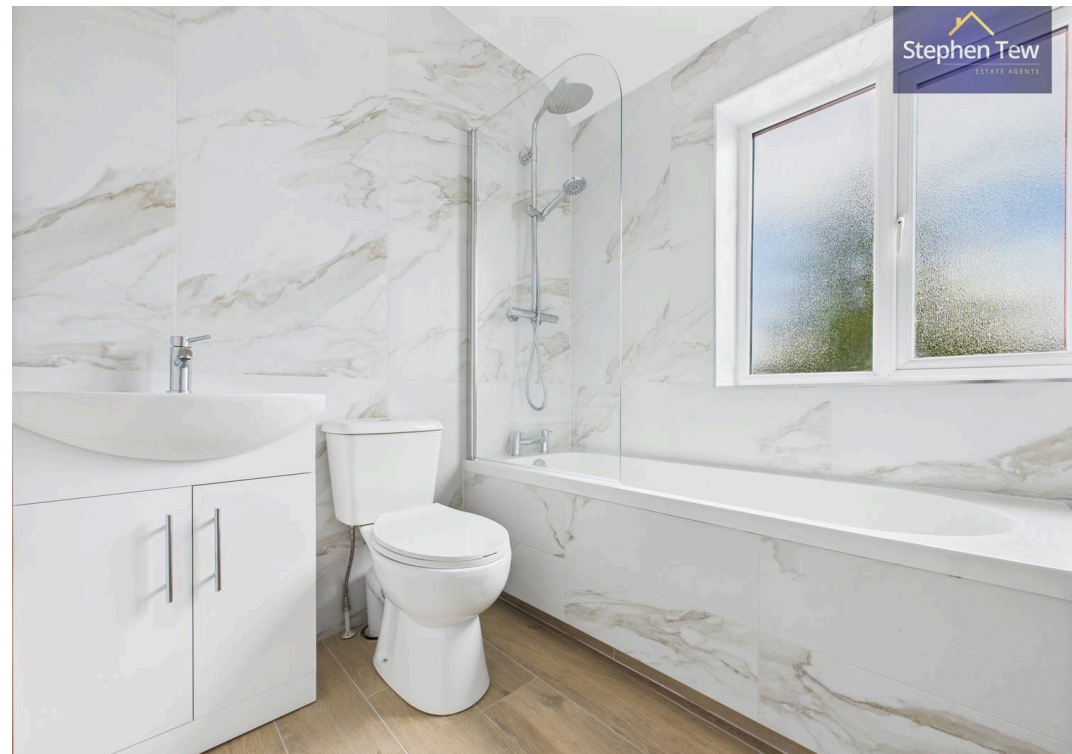
6' 8" x 9' 6" (2.04m x 2.90m)

## Bathroom

6' 5" x 6' 9" (1.96m x 2.05m)











Floor 1



Floor 2



Approximate total area<sup>(1)</sup>  
695 ft<sup>2</sup>  
64.7 m<sup>2</sup>

(1) Excluding balconies and terraces

Calculations reference the RICS IPMS 3C standard. Measurements are approximate and not to scale. This floor plan is intended for illustration only.

GIRAFFE360



Floor 1



Approximate total area<sup>(1)</sup>  
447 ft<sup>2</sup>  
41.6 m<sup>2</sup>

(1) Excluding balconies and terraces

Calculations reference the RICS IPMS 3C standard. Measurements are approximate and not to scale. This floor plan is intended for illustration only.

GIRAFFE360





## Stephen Tew Estate Agents

Stephen Tew Estate Agents, 132 Highfield Road - FY4 2HH

01253 401111

[info@stephentew.co.uk](mailto:info@stephentew.co.uk)

[www.stephentew.co.uk](http://www.stephentew.co.uk)

