



6 Bowgreave Close, Blackpool

Blackpool

Offers Over £210,000



## 6 Bowgreave Close

Blackpool, Blackpool

Meticulously maintained, this semi-detached house is nestled in a serene residential area, boasting a private driveway and garage for utmost convenience. As you step through the welcoming porch and hallway, you're greeted by a spacious lounge, leading to a modern open-plan kitchen/dining room that is perfect for entertaining. The property further features a sunroom, ideal for relaxing with a book or enjoying a morning coffee. Upstairs, the landing guides you to three well-appointed bedrooms and a recently renovated family bathroom, adding a touch of luxury to every-day living (Bathroom updated 2 years ago). Noteworthy updates also include a new sunroom roof, as well as new windows and doors throughout, ensuring both style and energy efficiency. The rear garden is a tranquil oasis, with an enclosed space offering privacy, a raised decking seating area for alfresco dining, and a convenient storage shed for all your outdoor essentials.

Council Tax band: B

Tenure: Leasehold

- Meticulously Maintained Semi-Detached House In Quiet Residential Location With Driveway And Garage
- Porch, Hallway, Lounge, Modern open Plan Kitchen/ Dining Room, Sunroom, Landing, Three Bedrooms, Family Bathroom
- Enclosed Rear Garden With Raised Decking Seating Area And Storage Shed





#### **Porch**

4' 9" x 3' 2" (1.44m x 0.96m)

#### **Hallway**

#### **Lounge**

12' 3" x 15' 4" (3.73m x 4.68m)

#### **Kitchen**

15' 3" x 11' 3" (4.66m x 3.42m)

#### **Sunroom**

13' 9" x 7' 0" (4.18m x 2.14m)

#### **Landing**

#### **Bedroom 1**

8' 4" x 14' 3" (2.53m x 4.35m)

#### **Bedroom 2**

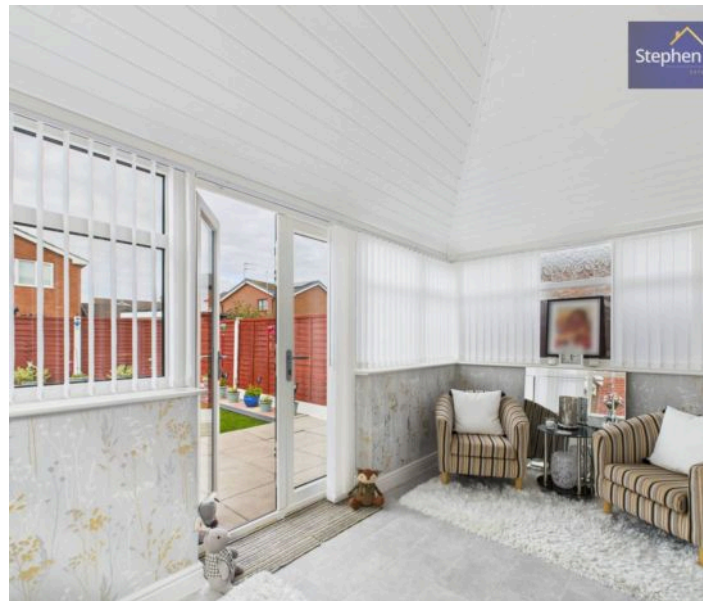
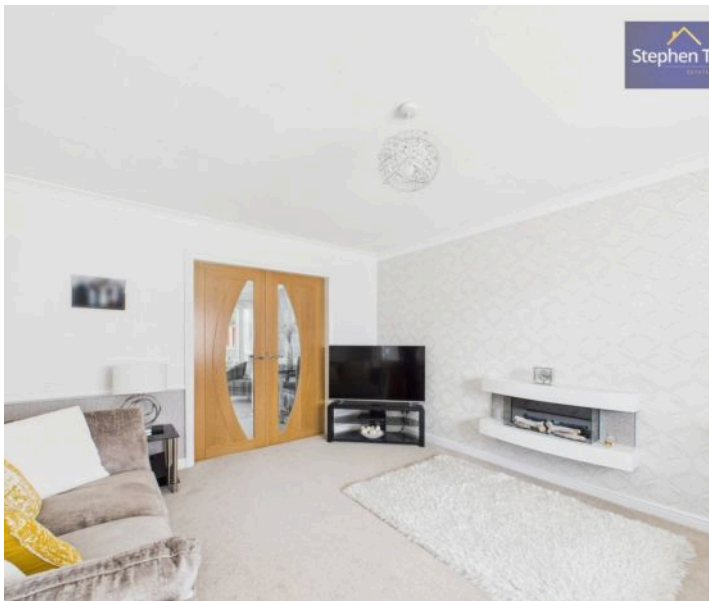
9' 5" x 12' 5" (2.86m x 3.78m)

#### **Bedroom 3**

6' 11" x 8' 8" (2.12m x 2.65m)

#### **Bathroom**

5' 9" x 6' 5" (1.76m x 1.95m)







**Porch**  
4' 9" x 3' 2" (1.44m x 0.96m)

**Hallway**

**Lounge**  
12' 3" x 15' 4" (3.73m x 4.68m)

**Kitchen**  
15' 3" x 11' 3" (4.66m x 3.42m)

**Sunroom**  
13' 9" x 7' 0" (4.18m x 2.14m)

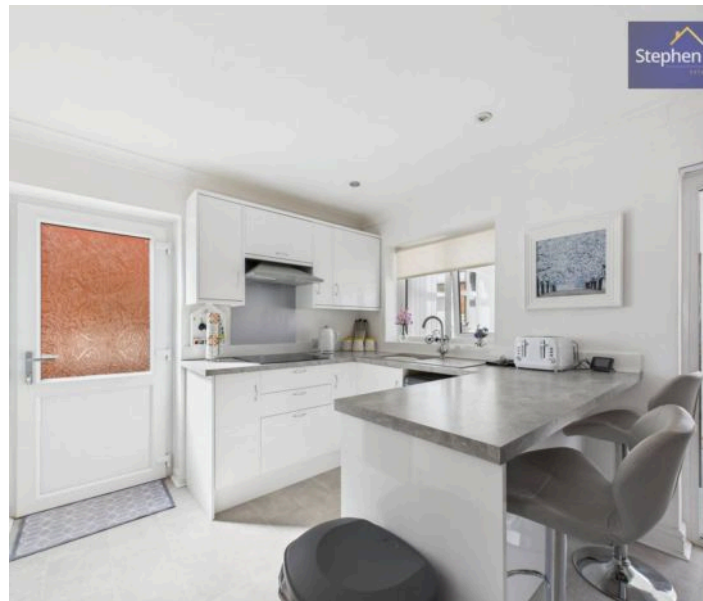
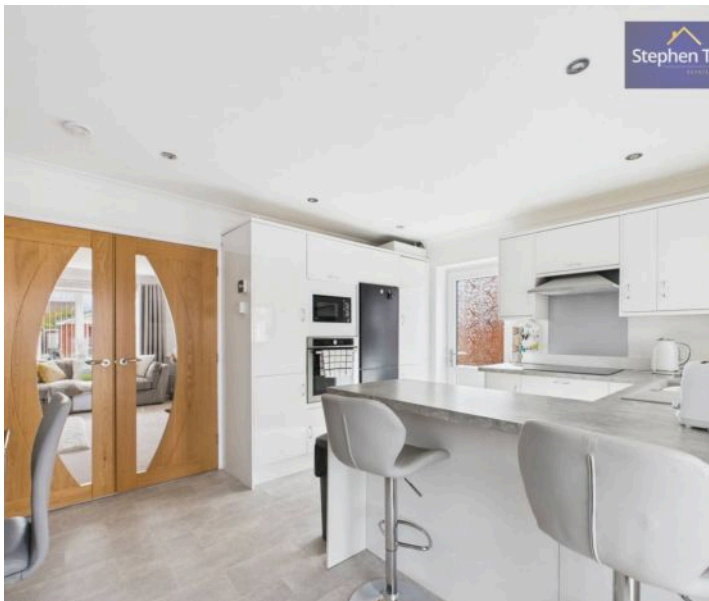
**Landing**

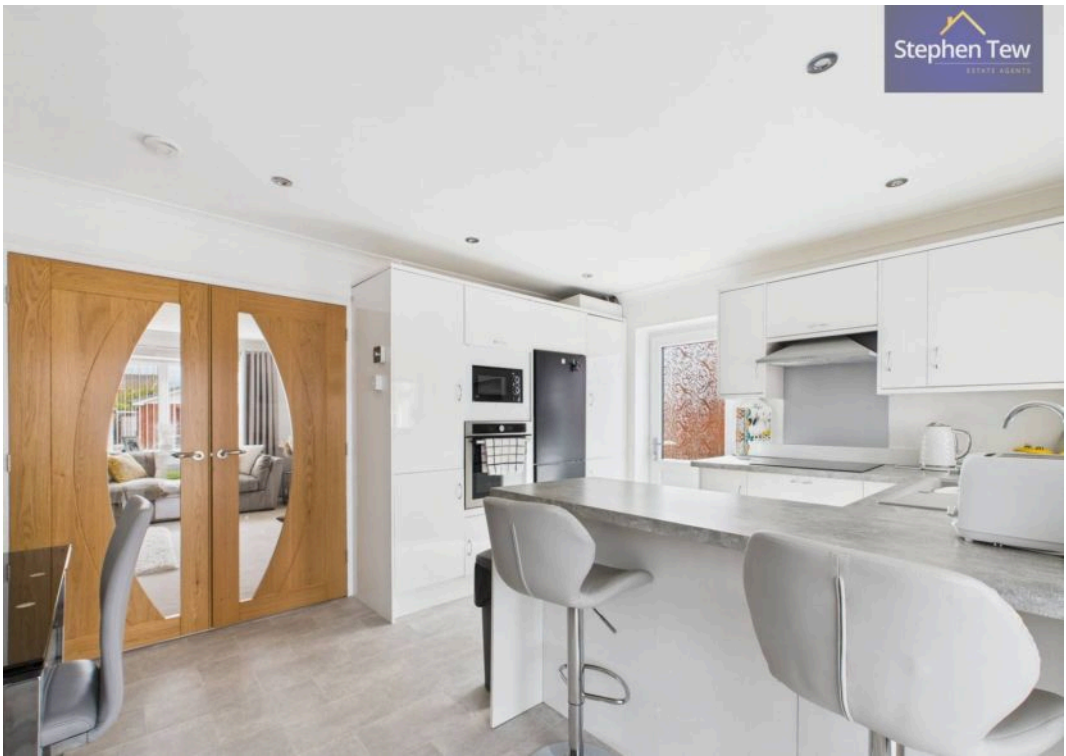
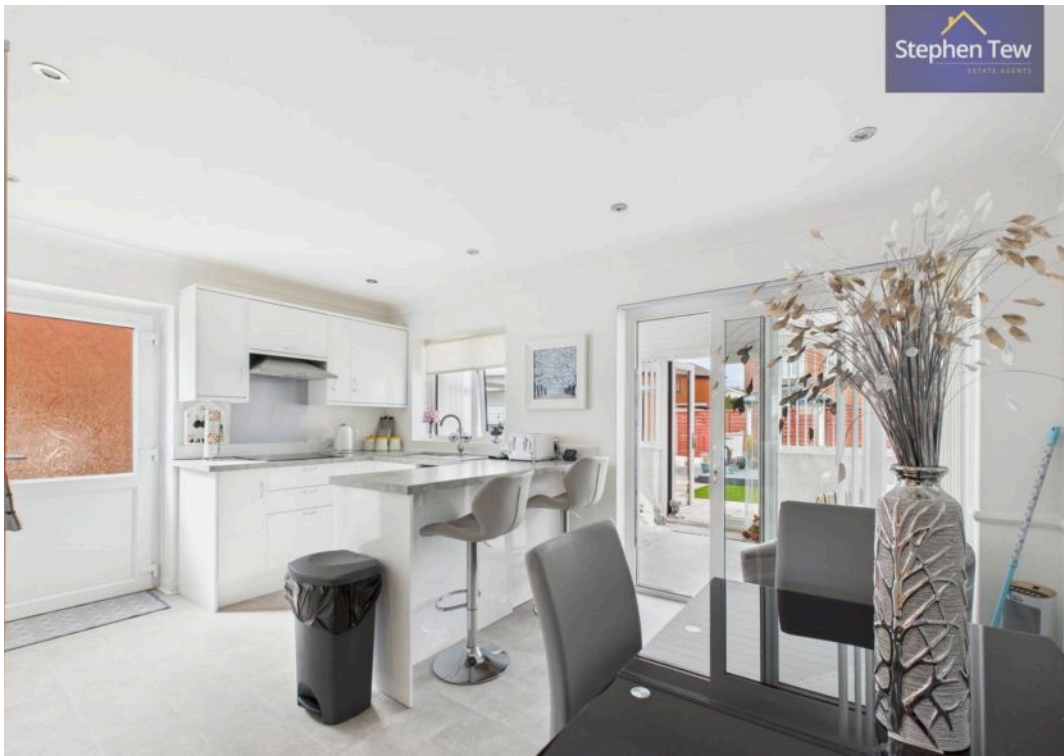
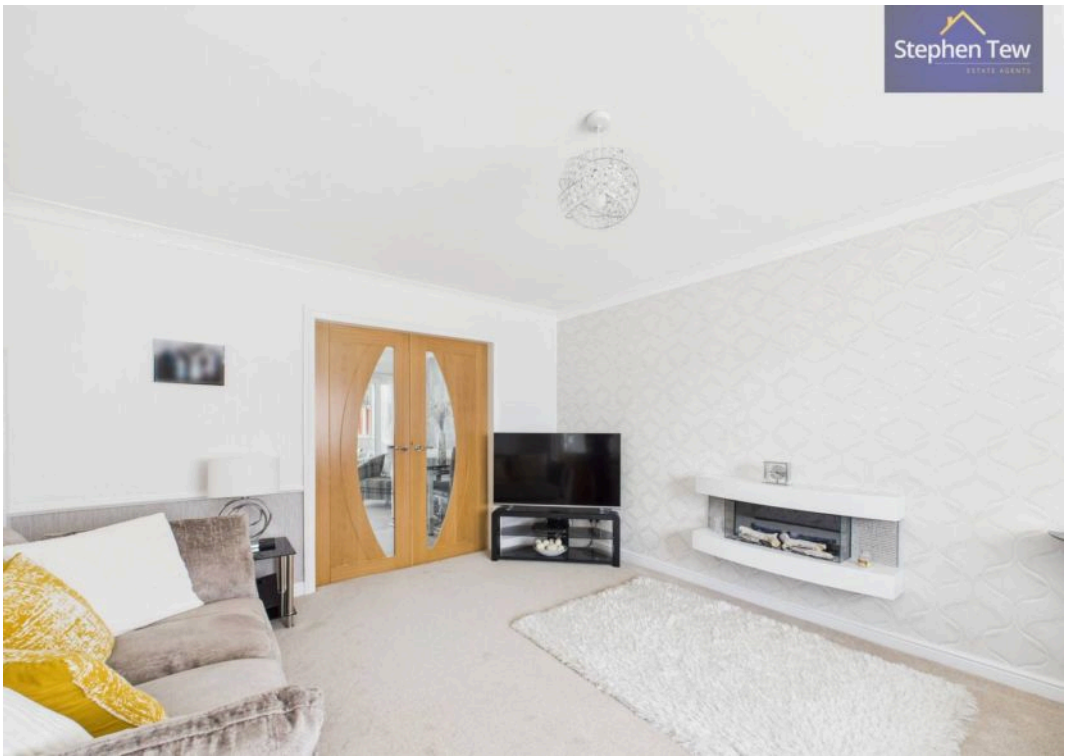
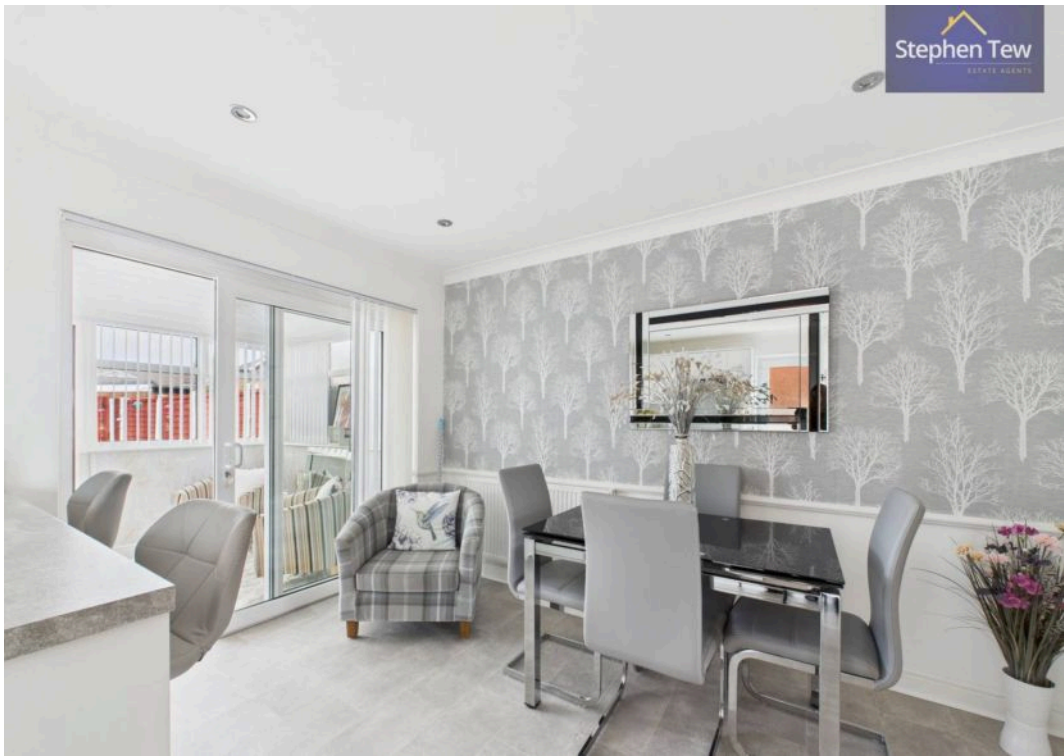
**Bedroom 1**  
8' 4" x 14' 3" (2.53m x 4.35m)

**Bedroom 2**  
9' 5" x 12' 5" (2.86m x 3.78m)

**Bedroom 3**  
6' 11" x 8' 8" (2.12m x 2.65m)

**Bathroom**  
5' 9" x 6' 5" (1.76m x 1.95m)









**FRONT GARDEN**

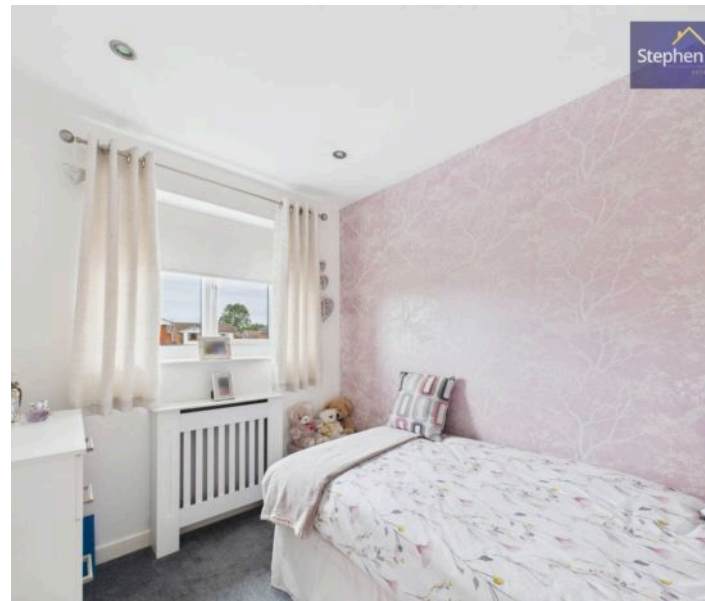
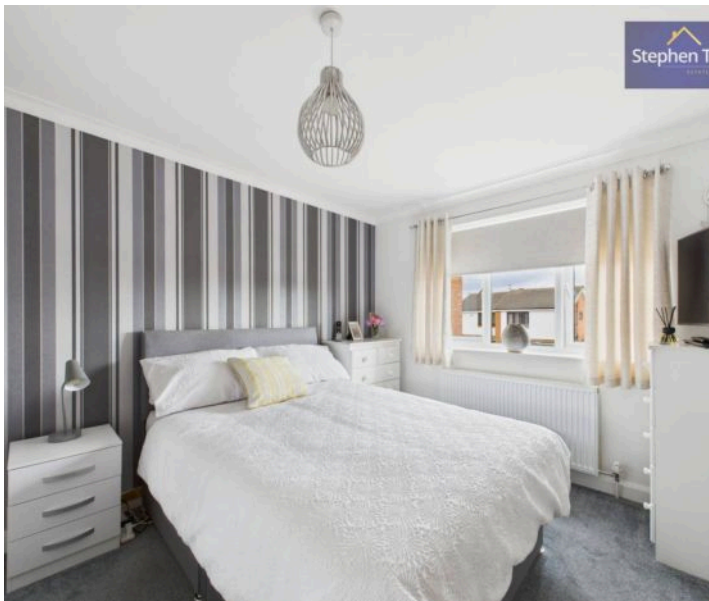
**REAR GARDEN**

**DRIVEWAY**

2 Parking Spaces

**GARAGE**

Single Garage





**FRONT GARDEN**

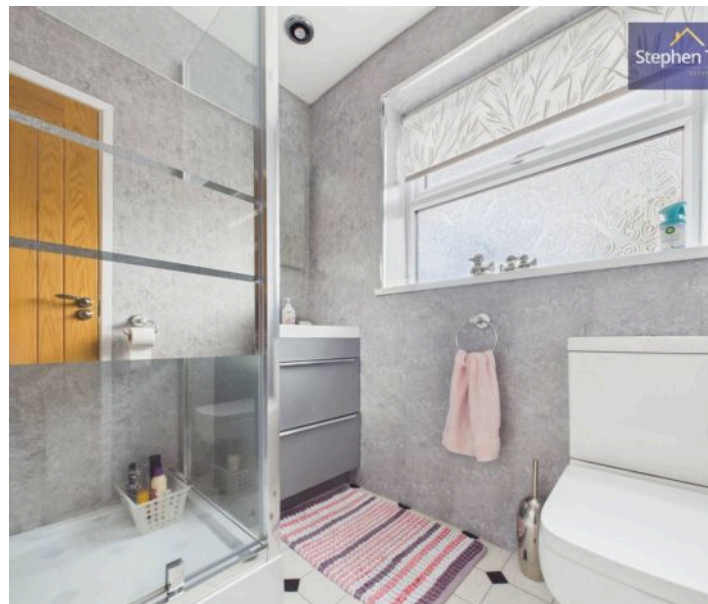
**REAR GARDEN**

**DRIVEWAY**

2 Parking Spaces

**GARAGE**

Single Garage











## Stephen Tew Estate Agents

Stephen Tew Estate Agents, 132 Highfield Road - FY4 2HH

01253 401111

[info@stephentew.co.uk](mailto:info@stephentew.co.uk)

[www.stephentew.co.uk](http://www.stephentew.co.uk)

