



  
**Stephen Tew**  
ESTATE AGENTS  
**FOR SALE**  
stephentew.co.uk

**1 Sandridge Place, Blackpool**

Blackpool

Offers Over **£160,000**



# 1 Sandridge Place

Blackpool, Blackpool

This charismatic semi-detached house, ideally situated in a sought-after residential area, presents a wonderful opportunity for those seeking a comfortable family home. Stepping into the property through the inviting entrance vestibule, you are greeted by a spacious hallway that leads seamlessly to the elegantly designed lounge, perfect for relaxing evenings. The dining room offers a charming space for gatherings, while the kitchen provides both functionality and style. Moving upstairs, the landing branches into three generously sized bedrooms, each offering a tranquil retreat, along with a bathroom and a separate WC for added convenience. The property is enhanced by an enclosed rear garden, creating a private outdoor sanctuary. Being offered with no onward chain, this home is ready for its new owners to make cherished memories.

Outside, the property boasts a sizeable driveway and a garage providing ample storage space for vehicles or could be utilised for other purposes depending on individual needs. The outdoor area offers versatility for both leisure and practical use, adding further value to this appealing property.

Council Tax band: D

Tenure: Freehold

- Semi- Detached House In Popular Residential Location With Garage And Driveway
- Entrance Vestibule, Hallway, Lounge, Dining Room, Kitchen, Landing, Three Bedrooms, Bathroom, Separate WC
- Enclosed Rear Garden
- No Onward Chain







**Lounge**  
25' 2" x 12' 6" (7.66m x 3.80m)

**Dining Room**  
9' 3" x 9' 3" (2.82m x 2.81m)

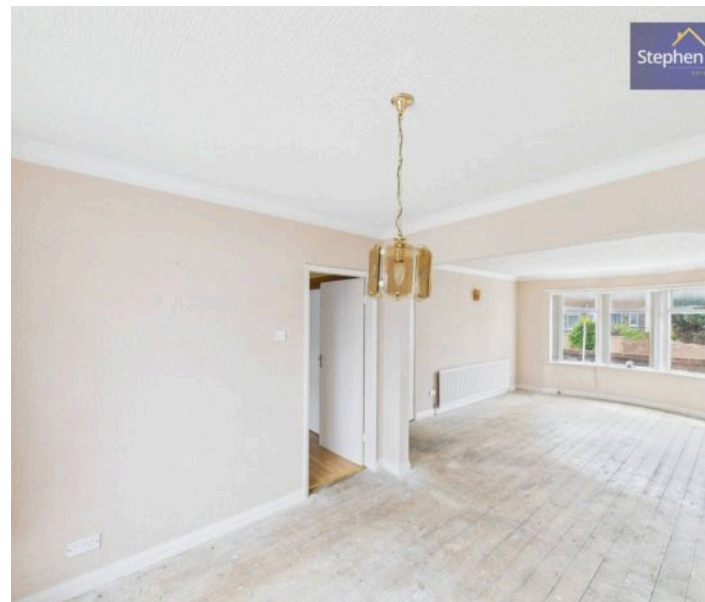
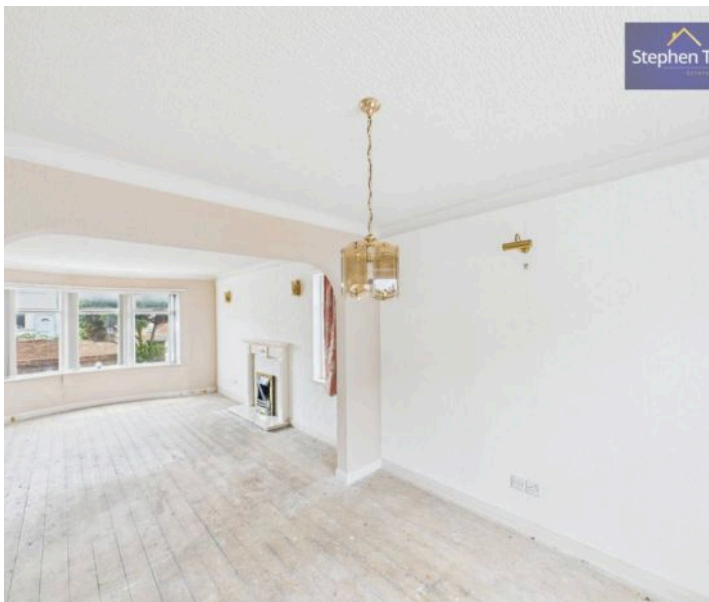
**Kitchen**  
6' 10" x 8' 1" (2.08m x 2.46m)

**Bedroom 1**  
12' 10" x 12' 6" (3.92m x 3.81m)

**Bedroom 2**  
11' 11" x 9' 11" (3.63m x 3.02m)

**Bedroom 3**  
7' 7" x 6' 9" (2.31m x 2.05m)

**Bathroom**  
7' 7" x 6' 0" (2.30m x 1.83m)







**Lounge**  
25' 2" x 12' 6" (7.66m x 3.80m)

**Dining Room**  
9' 3" x 9' 3" (2.82m x 2.81m)

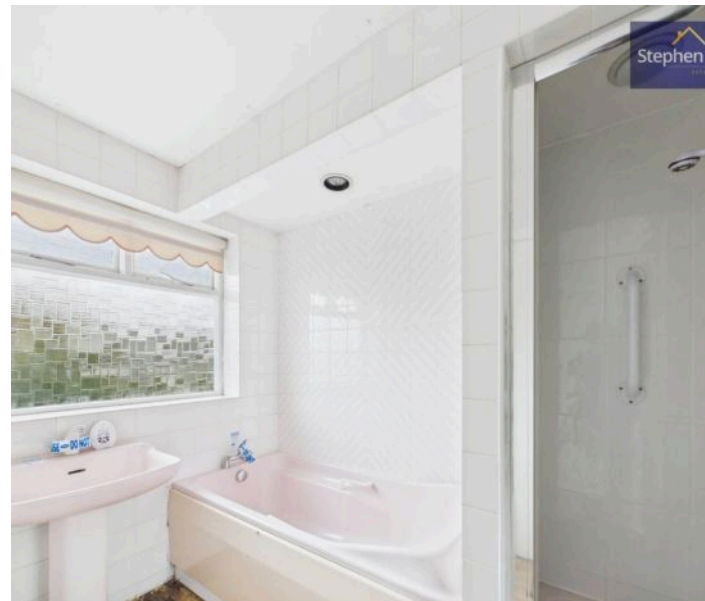
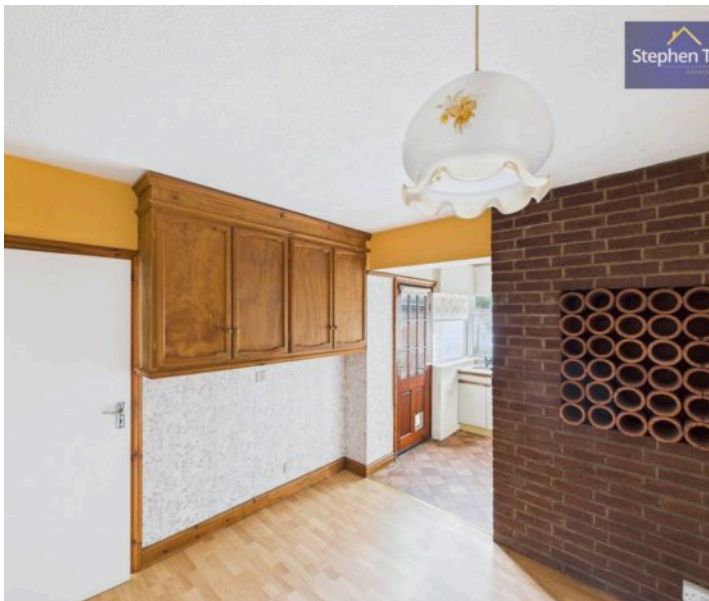
**Kitchen**  
6' 10" x 8' 1" (2.08m x 2.46m)

**Bedroom 1**  
12' 10" x 12' 6" (3.92m x 3.81m)

**Bedroom 2**  
11' 11" x 9' 11" (3.63m x 3.02m)

**Bedroom 3**  
7' 7" x 6' 9" (2.31m x 2.05m)

**Bathroom**  
7' 7" x 6' 0" (2.30m x 1.83m)













## Stephen Tew Estate Agents

Stephen Tew Estate Agents, 132 Highfield Road – FY4 2HH

01253 401111

[info@stephentew.co.uk](mailto:info@stephentew.co.uk)

[www.stephentew.co.uk](http://www.stephentew.co.uk)

