



5 Tithebarn Gate, Poulton-Le-Fylde

Poulton-Le-Fylde

Offers Over **£180,000**

5 Tithebarn Gate

Poulton-Le-Fylde, Poulton-Le-Fylde

Located in a prime area, this spacious first-floor flat offers a convenient lifestyle within close proximity to the bustling Poulton-Le-Fylde town centre. The property boasts a welcoming hallway leading to a generously sized lounge, perfect for relaxing or entertaining guests. The open-plan kitchen and dining room provide a modern and functional space, ideal for daily living. Two well-appointed bedrooms offer comfortable retreats, while the modern bathroom features a stylish and convenient walk-in shower, adding a touch of luxury to every-day routines.

Outside, this property continues to impress with its added feature of a garage, providing secure parking and additional storage space. The well-maintained exterior of the building offers a charming kerb appeal, while the surrounding area boasts a range of amenities, including shops, restaurants, and parks, ensuring both convenience and leisure are at your doorstep. Whether you're looking for a peaceful retreat or a vibrant urban lifestyle, this property offers the best of both worlds, making it a must-see for those seeking a modern and well-located home.

Council Tax band: C

Tenure: Leasehold

- Spacious First Floor Flat With Garage Situated In A Prime Location Within Close Proximity To Poulton-Le-Fylde Town Centre
- Hallwa, Spacious Lounge, Open Plan Kitchen/ Dining Room, Two Bedrooms, Modern Bathroom With Walk-In Shower
- Pets Allowed
- Loft is fully boarded with pull down ladder
- Garage is to the rear of property on the left hand side





Stephen Tew
ESTATE AGENTS

Landing

6' 7" x 6' 9" (2.01m x 2.07m)

Hallway

Lounge

13' 9" x 11' 8" (4.20m x 3.56m)

Kitchen/ Dining Room

15' 11" x 11' 9" (4.84m x 3.57m)

Bedroom 1

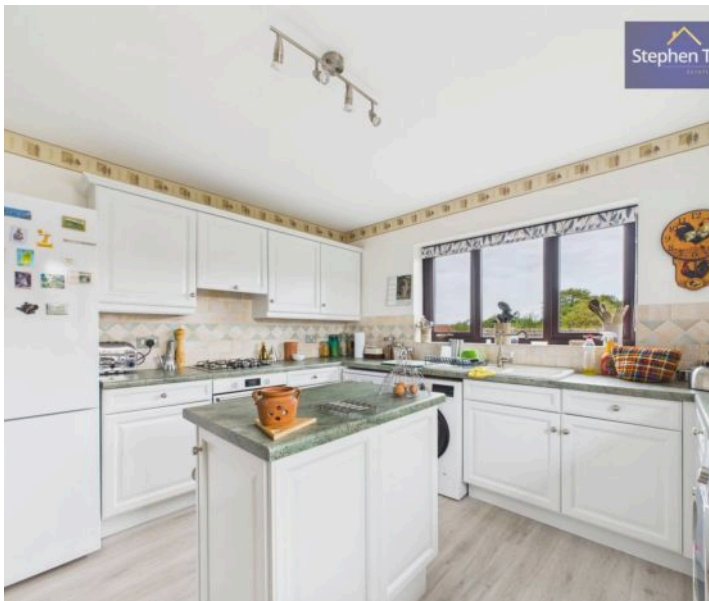
11' 11" x 11' 9" (3.63m x 3.59m)

Bedroom 2

10' 1" x 11' 10" (3.07m x 3.61m)

Bathroom

6' 7" x 7' 10" (2.01m x 2.39m)



Stephen Tew
ESTATE AGENTS



Stephen Tew
ESTATE AGENTS



Landing
6' 7" x 6' 9" (2.01m x 2.07m)

Hallway

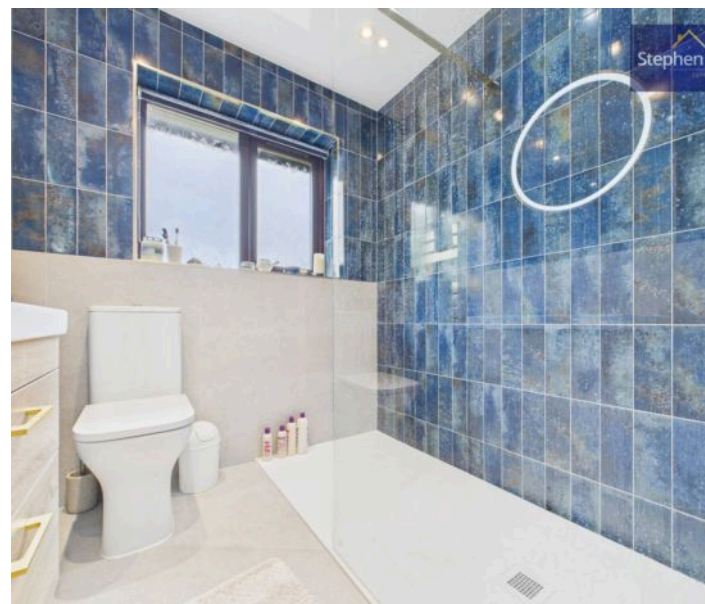
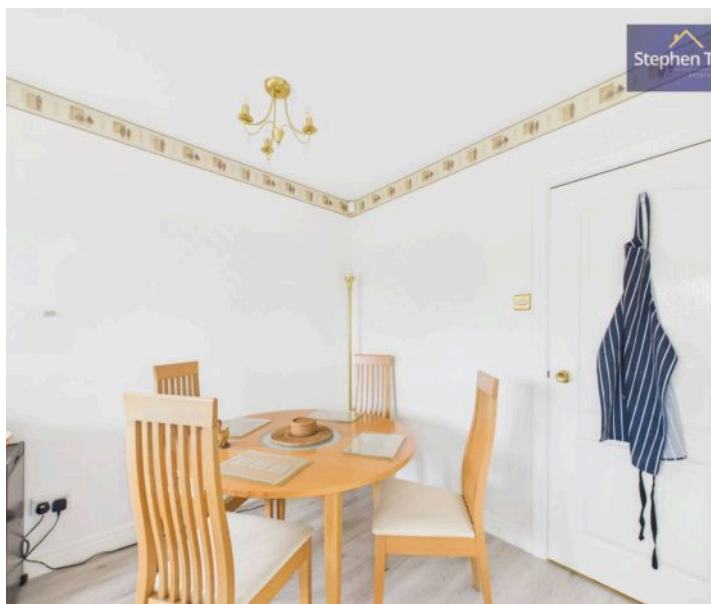
Lounge
13' 9" x 11' 8" (4.20m x 3.56m)

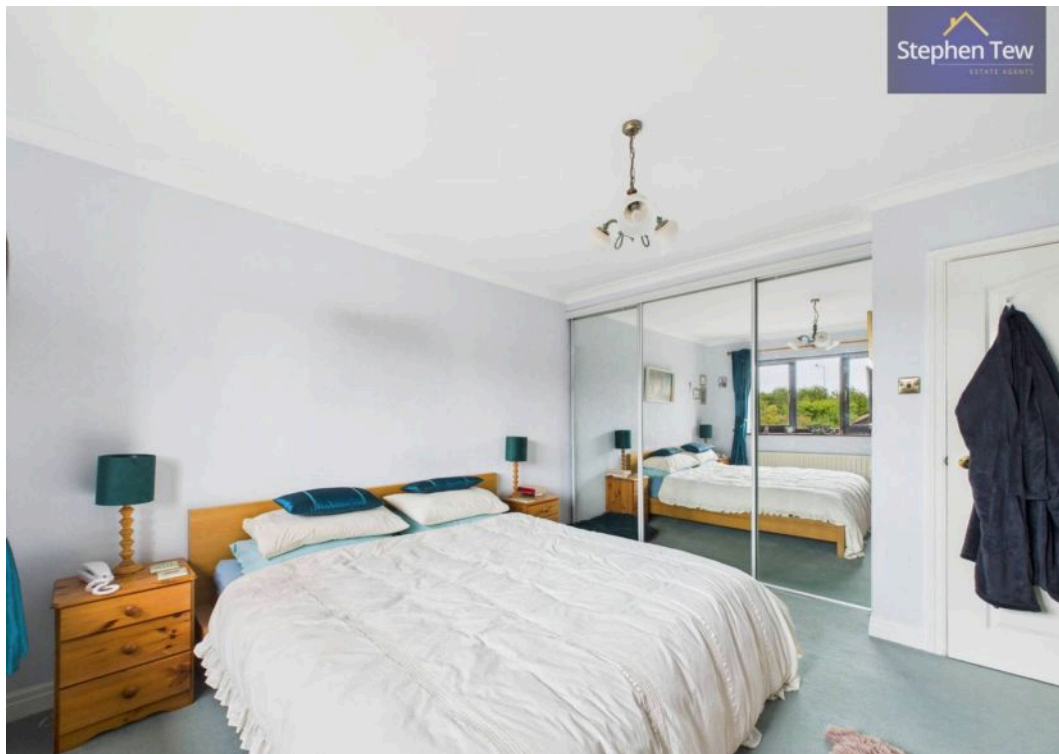
Kitchen/ Dining Room
15' 11" x 11' 9" (4.84m x 3.57m)

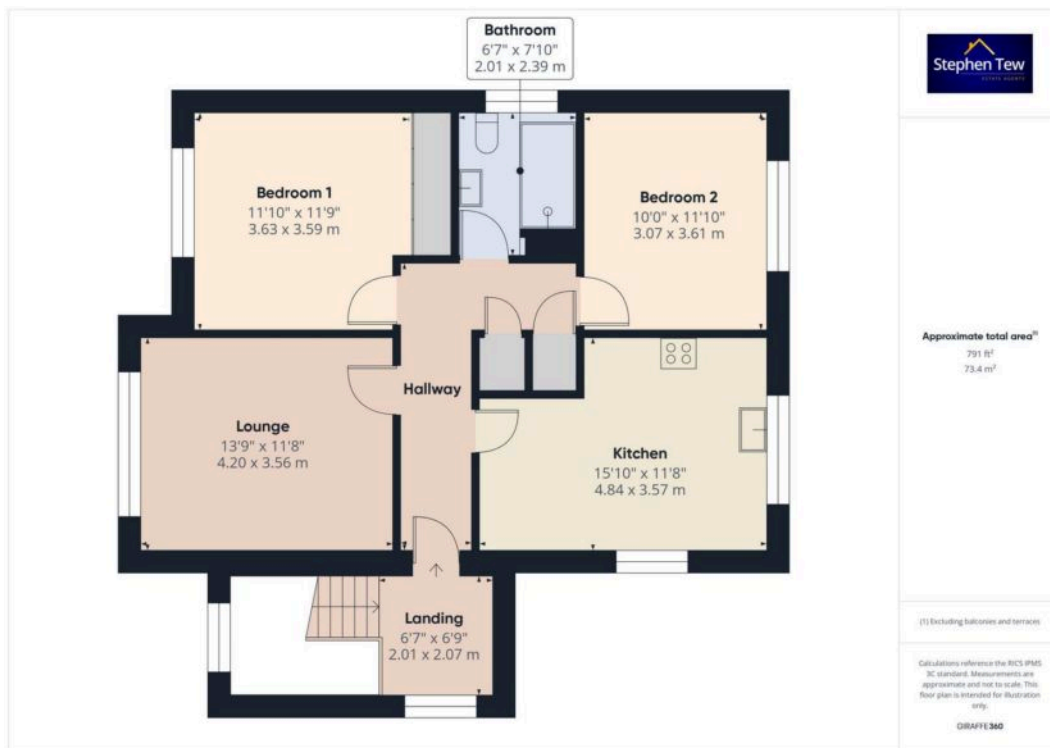
Bedroom 1
11' 11" x 11' 9" (3.63m x 3.59m)

Bedroom 2
10' 1" x 11' 10" (3.07m x 3.61m)

Bathroom
6' 7" x 7' 10" (2.01m x 2.39m)









Stephen Tew Estate Agents

Stephen Tew Estate Agents, 132 Highfield Road – FY4 2HH

01253 401111

info@stephentew.co.uk

www.stephentew.co.uk

