



9 Finsbury Avenue, Blackpool

Blackpool

Offers Over £125,000

9 Finsbury Avenue

Blackpool, Blackpool

Nestled within a sought-after residential area, this charming semi-detached house is conveniently situated within a stone's throw of local shops, amenities, and excellent transportation links, making it an ideal abode for families and professionals alike. Upon entering, you are greeted by a welcoming hallway leading to a spacious lounge, perfect for relaxing and entertaining. The sleek open plan kitchen and living area boasts a modern kitchen island, ensuring a seamless flow throughout the ground floor. Ascend the staircase to the landing where you will find a three-piece suite family bathroom and three generously sized bedrooms, offering comfortable accommodation for all residents. Outside, the property features an enclosed rear garden with side access, providing a private outdoor space ideal for al fresco dining and recreation. Additionally, a brick-built storage area offers practicality and convenience for storing outdoor essentials.

Council Tax band: B

Tenure: Freehold

- Semi-Detached House Located Within Close Proximity To Local Shops, Amenities And Transportation Links
- Hallway, Lounge, Open Plan Kitchen/ Living Area With Kitchen Island, Landing, Three Piece Suite Family Bathroom, Three Bedrooms
- Enclosed Rear Garden With Side Access And Brick Built Storage





Hallway

Lounge

14' 2" x 7' 3" (4.32m x 2.20m)

Kitchen/ Living Area

14' 1" x 16' 7" (4.28m x 5.05m)

Landing

Bedroom 1

10' 8" x 14' 3" (3.24m x 4.35m)

Bedroom 2

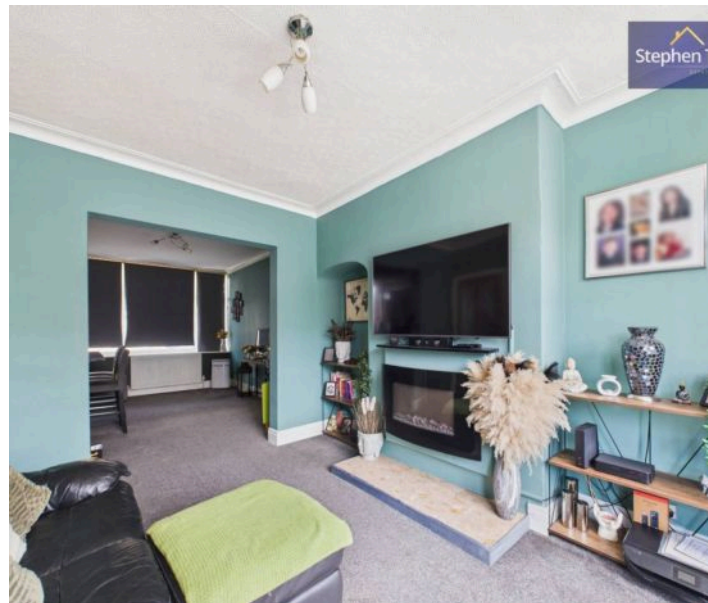
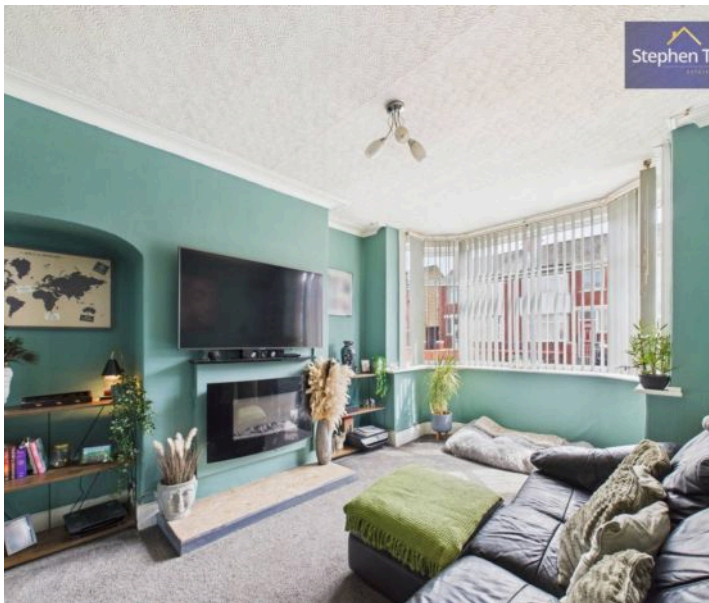
10' 2" x 10' 10" (3.11m x 3.31m)

Bedroom 3

5' 7" x 6' 10" (1.71m x 2.09m)

Bathroom

6' 0" x 5' 3" (1.84m x 1.61m)





Hallway

Lounge

14' 2" x 7' 3" (4.32m x 2.20m)

Kitchen/ Living Area

14' 1" x 16' 7" (4.28m x 5.05m)

Landing

Bedroom 1

10' 8" x 14' 3" (3.24m x 4.35m)

Bedroom 2

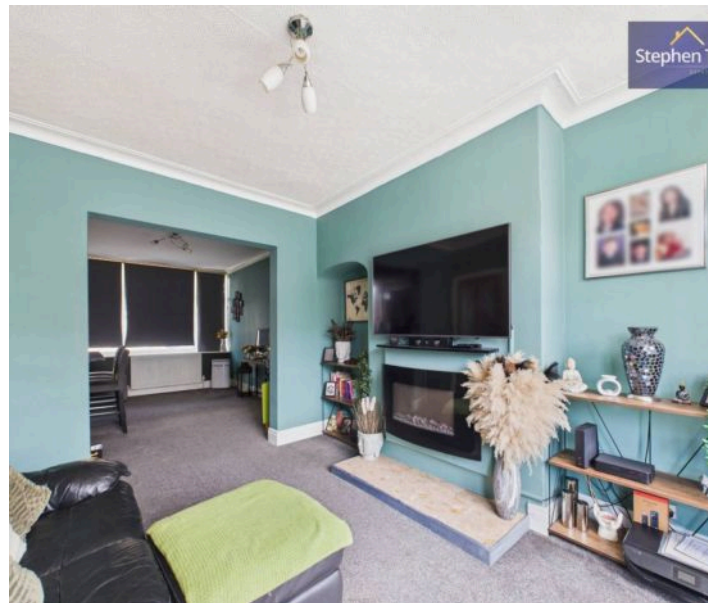
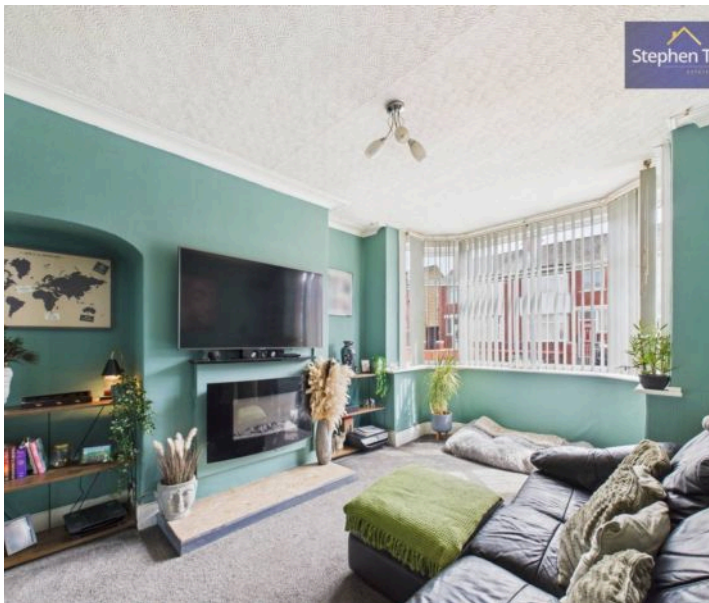
10' 2" x 10' 10" (3.11m x 3.31m)

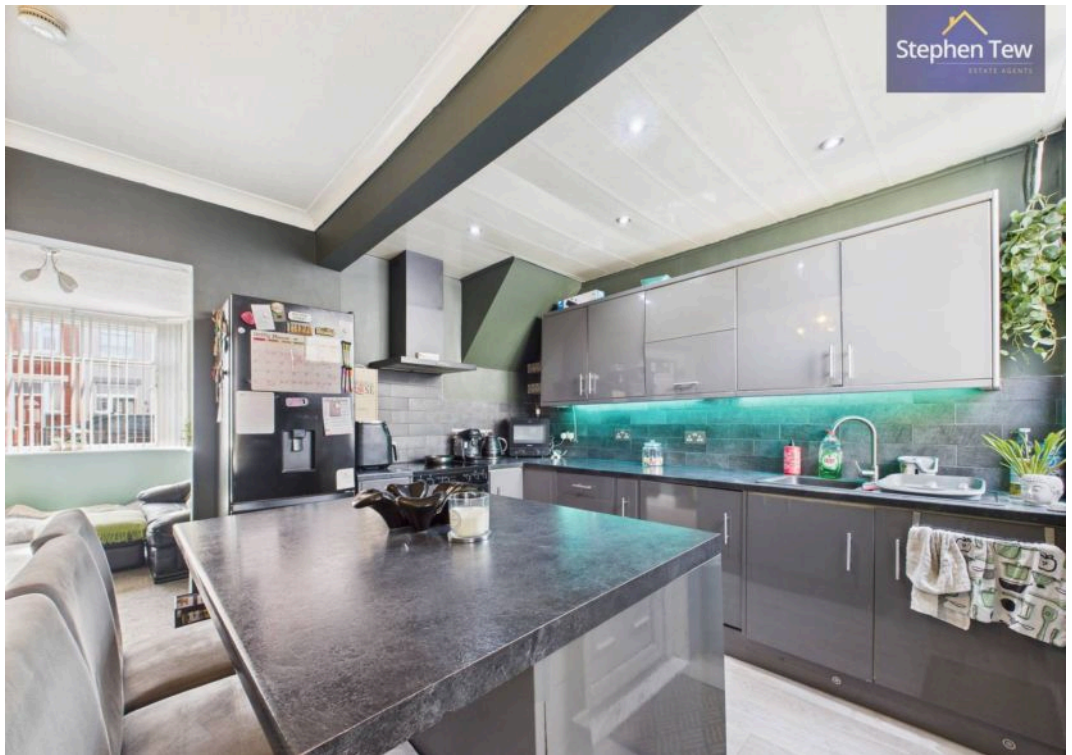
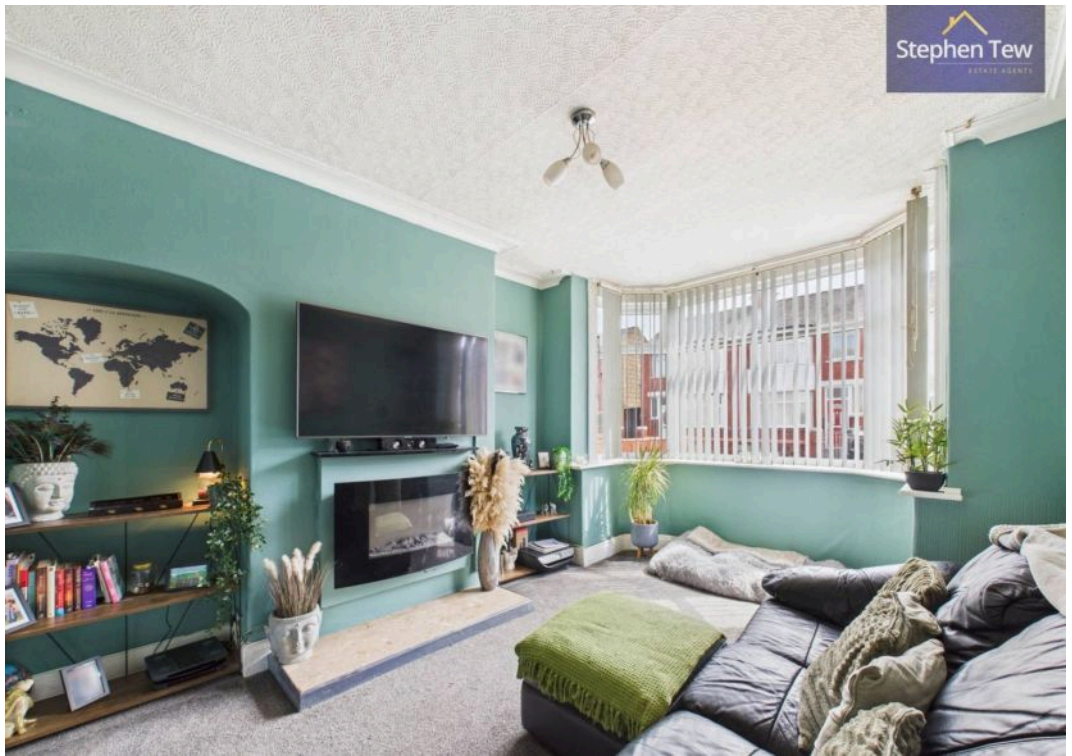
Bedroom 3

5' 7" x 6' 10" (1.71m x 2.09m)

Bathroom

6' 0" x 5' 3" (1.84m x 1.61m)



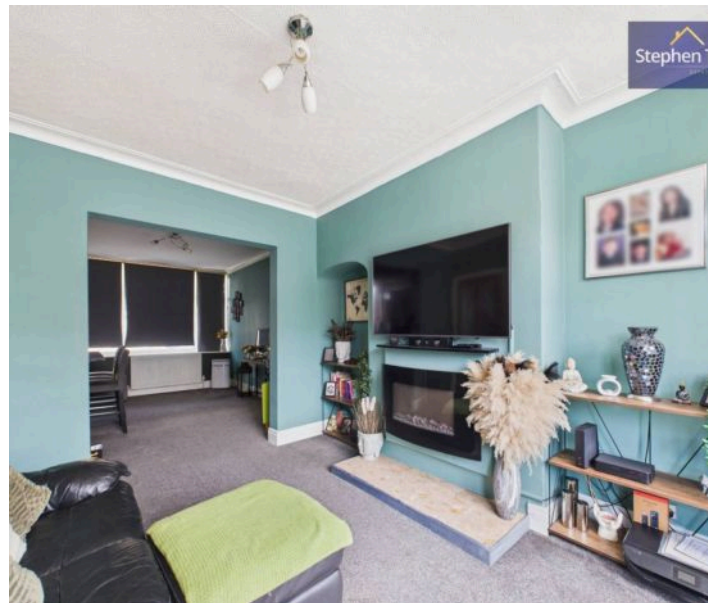
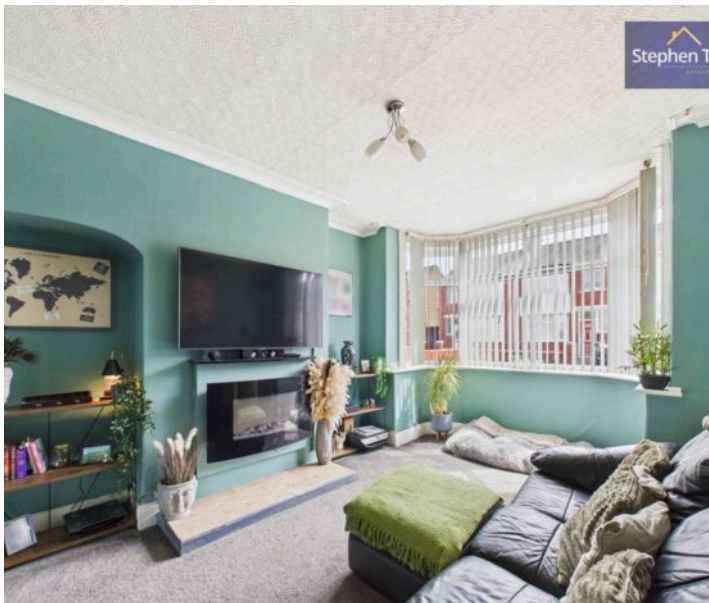


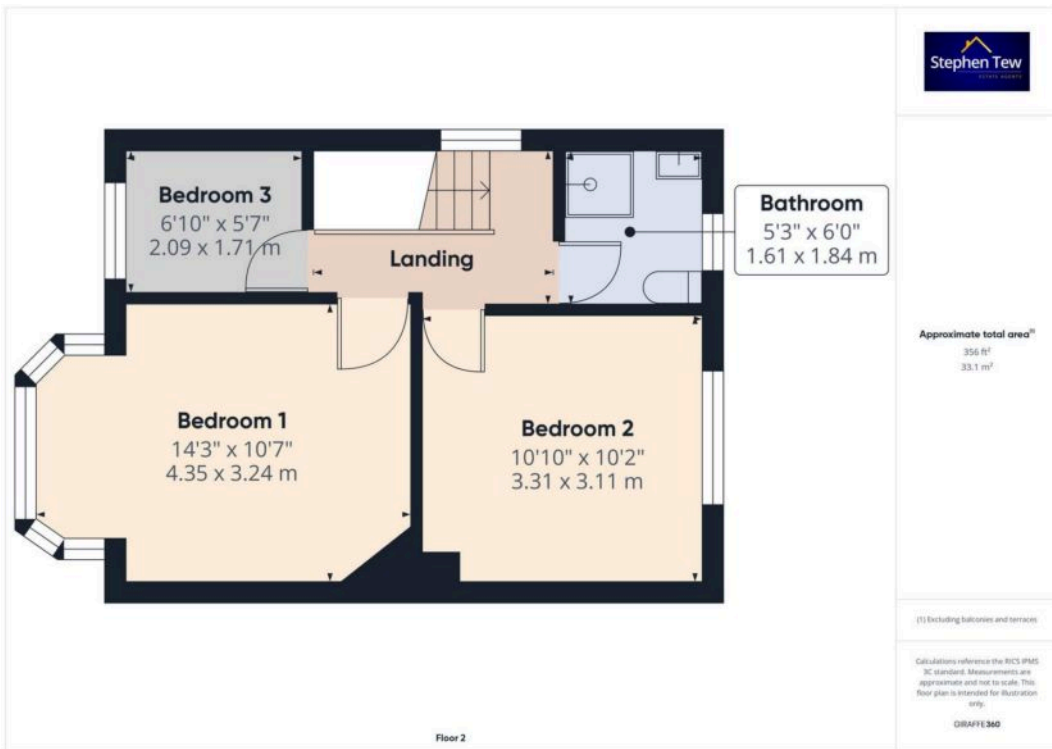


FRONT GARDEN

REAR GARDEN

ON STREET







Stephen Tew Estate Agents

Stephen Tew Estate Agents, 132 Highfield Road - FY4 2HH

01253 401111

info@stephentew.co.uk

www.stephentew.co.uk

