



1 St. Bernards House Promenade, Knott End-on-Sea

Poulton-Le-Fylde

Offers Over **£240,000**

1 St. Bernards House Promenade

Knott End-on-Sea, Poulton-Le-Fylde

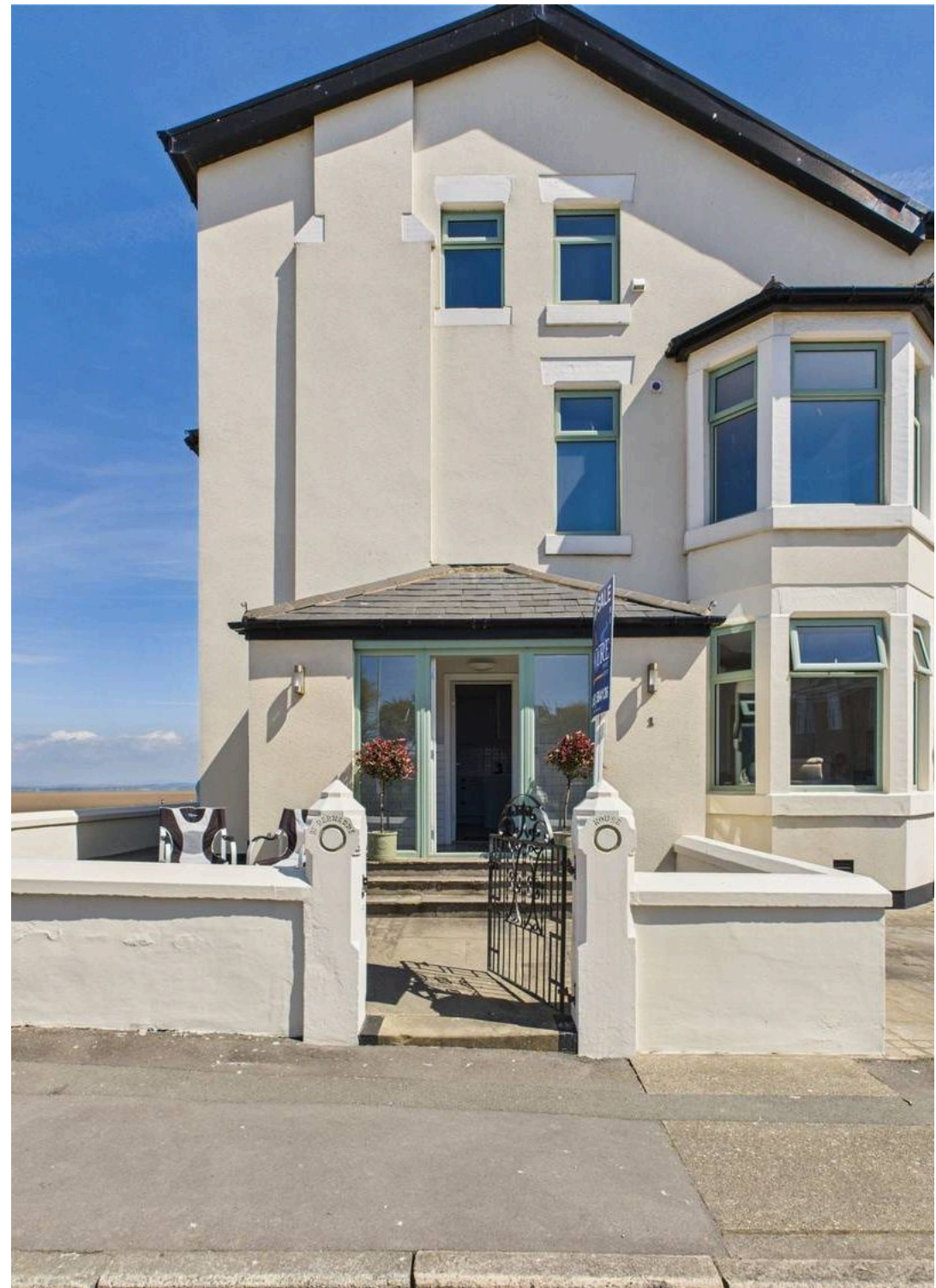
Introducing a rare opportunity to acquire this recently refurbished, luxury sea front ground floor maisonette that is sure to captivate discerning buyers seeking a residence of distinction in an enviable coastal location. This exceptional property has been meticulously designed to embody both modern elegance and seaside charm, offering a unique living experience.

Upon entry, an inviting entrance porch sets the tone for the residence, leading you into the heart of the home where a feature open plan dining kitchen with sea views seamlessly flows into a generously proportioned living room. This seamless integration of spaces not only creates a fluid living environment perfect for entertaining or relaxing but also maximises the stunning natural light that filters in from the expansive windows.

A thoughtfully designed inner hallway leads to the master en-suite bedroom on the ground floor, while ascending to the first floor reveals two additional bedrooms and a well-appointed bathroom, providing ample space for family living or hosting guests. Further adding to the appeal of this property, a spacious basement room offers flexibility for various purposes such as a home office, media room, or gym, catering to the diverse needs of modern lifestyles.

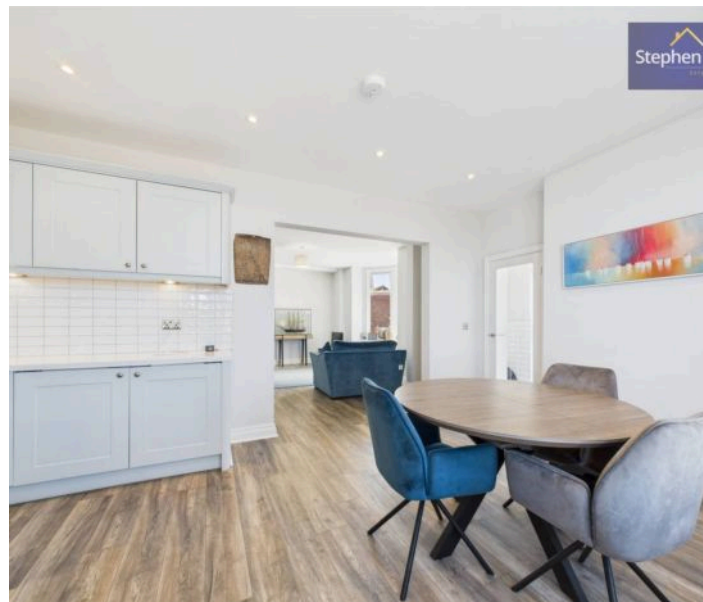
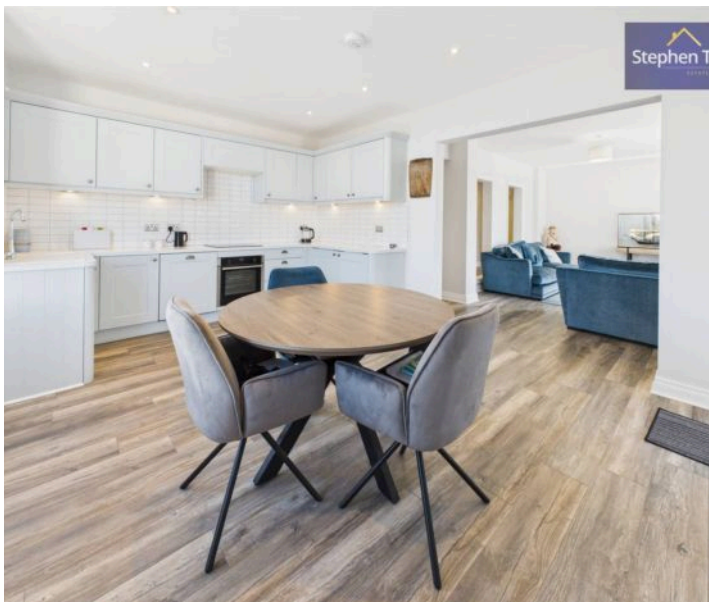
One of the defining features of this property is the breathtaking and uninterrupted sea views that can be enjoyed from multiple vantage points throughout the residence, ensuring that the ever-changing seascape becomes a constant backdrop to daily life. Nestled in a prime location, this apartment offers convenience as well as tranquillity, with easy access to a range of amenities including shops, restaurants, and leisure facilities that underscore the appeal of coastal living.

The property presents the unique opportunity of being offered with no onward chain. With its combination of luxurious finishes, prime location, and panoramic sea views, this ground floor maisonette represents a rare chance to embrace the epitome of coastal living in a residence that is as practical as it is elegant.





- Recently Refurbished Luxury Sea Front Ground Floor Maisonette
- Entrance Porch, Feature open plan Dining Kitchen with sea views opening into Living Room
- Inner Hallway leading to Master En-Suite Bedroom, First Floor with 2 Bedrooms and Bathroom, Spacious Basement Room
- Fantastic uninterrupted sea views, situated in a prime location close to amenities
- No onward chain





Basement

12' 2" x 16' 5" (3.72m x 5.01m)

Entrance Porch

12' 4" x 4' 9" (3.75m x 1.46m)

Kitchen/Dining Room/Living Area

30' 0" x 16' 11" (9.15m x 5.16m)

Hallway

18' 7" x 5' 4" (5.66m x 1.63m)

Bedroom 1

13' 9" x 13' 0" (4.20m x 3.95m)

En-suite

9' 10" x 8' 2" (2.99m x 2.48m)

Landing

17' 3" x 5' 2" (5.25m x 1.58m)

Bedroom 2

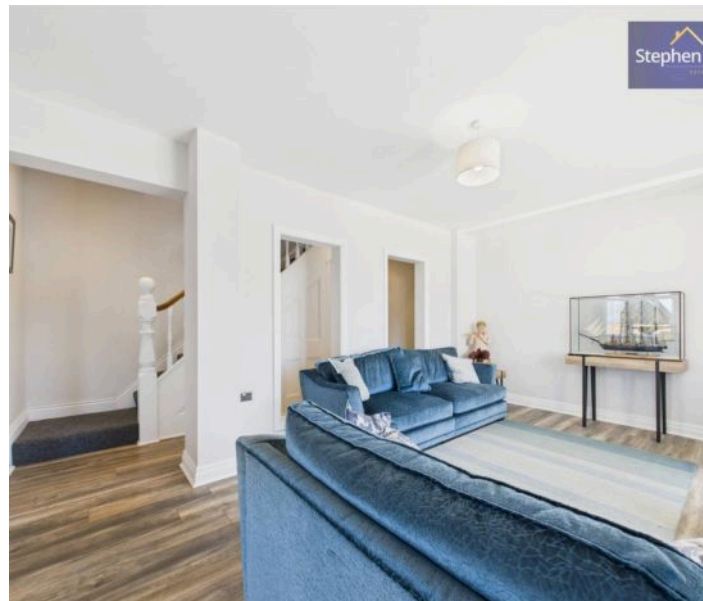
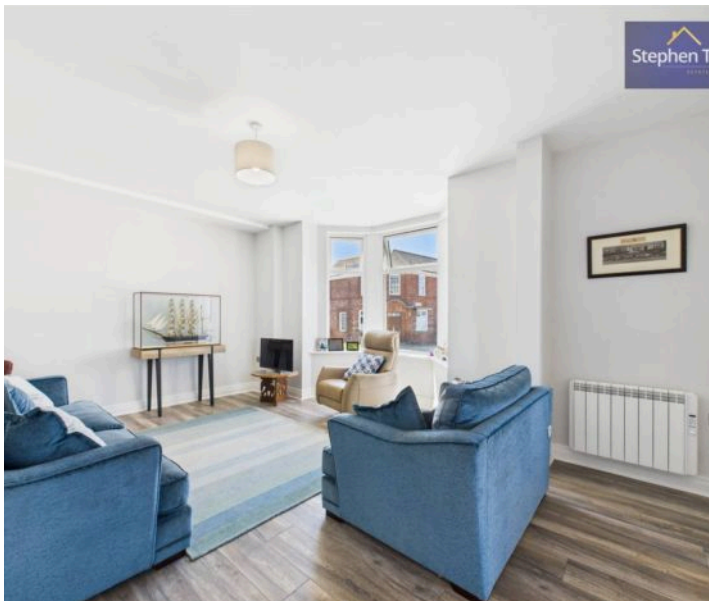
12' 2" x 17' 2" (3.72m x 5.23m)

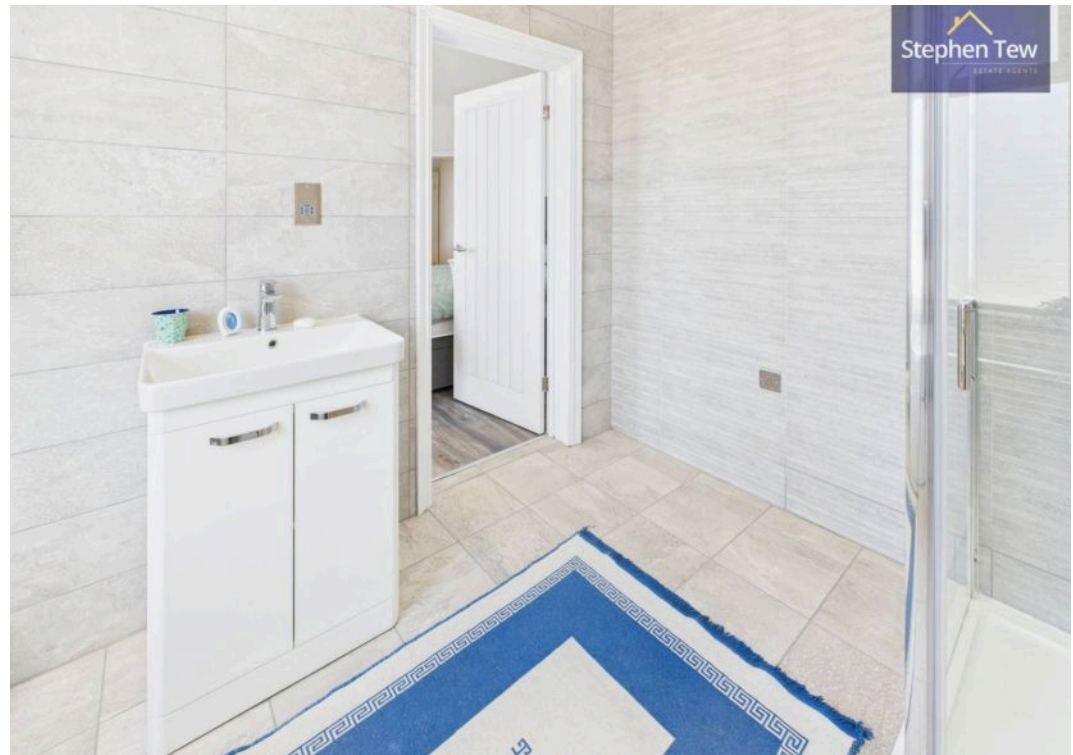
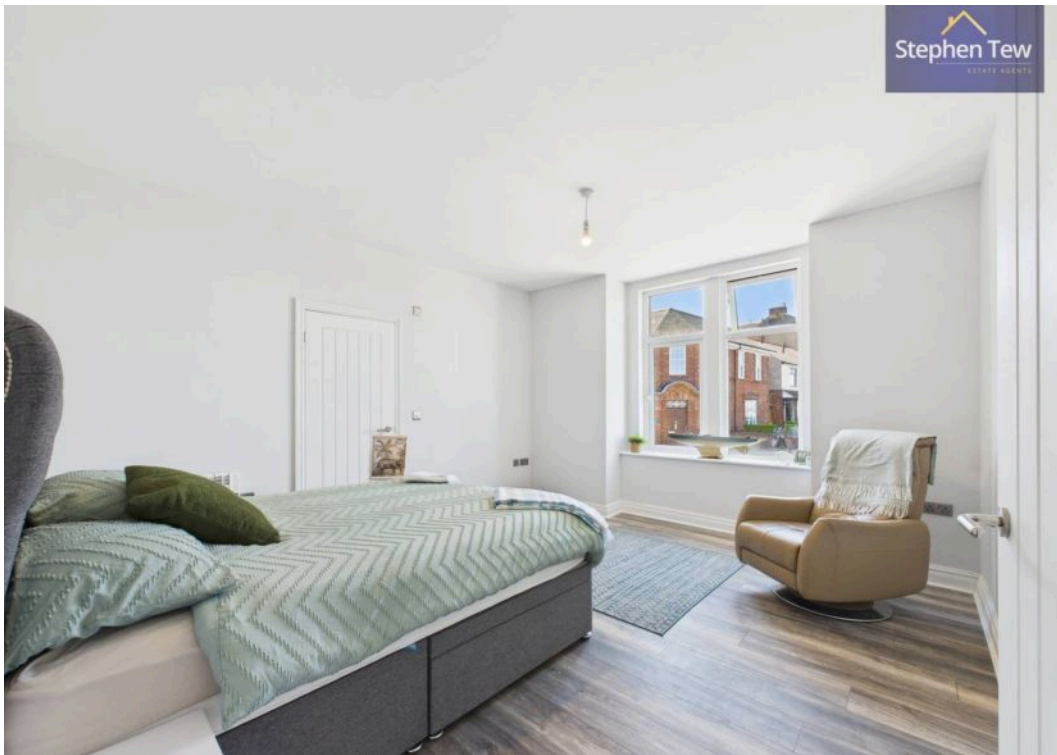
Bedroom 3

11' 5" x 11' 9" (3.47m x 3.59m)

Bathroom

5' 2" x 10' 11" (1.58m x 3.32m)







Basement

12' 2" x 16' 5" (3.72m x 5.01m)

Entrance Porch

12' 4" x 4' 9" (3.75m x 1.46m)

Kitchen/Dining Room/Living Area

30' 0" x 16' 11" (9.15m x 5.16m)

Hallway

18' 7" x 5' 4" (5.66m x 1.63m)

Bedroom 1

13' 9" x 13' 0" (4.20m x 3.95m)

En-suite

9' 10" x 8' 2" (2.99m x 2.48m)

Landing

17' 3" x 5' 2" (5.25m x 1.58m)

Bedroom 2

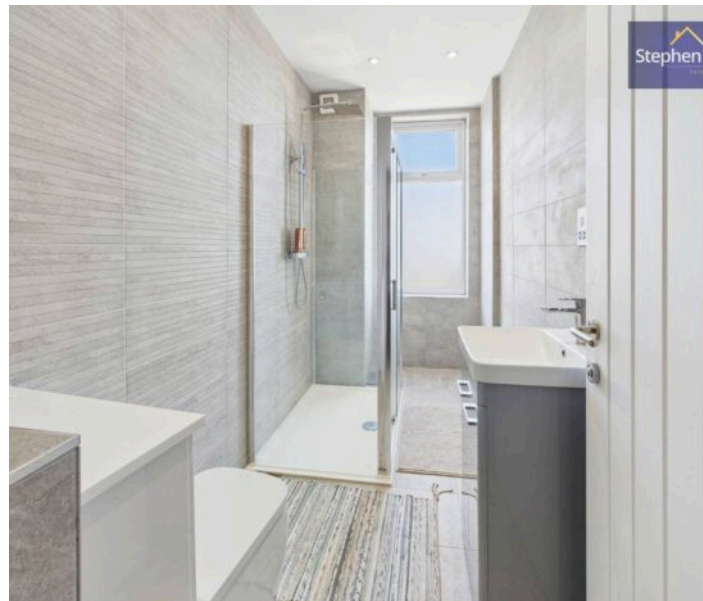
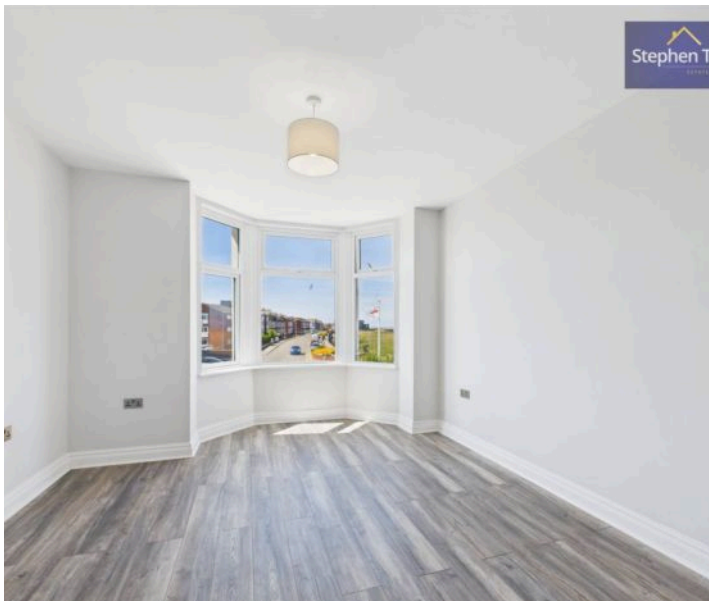
12' 2" x 17' 2" (3.72m x 5.23m)

Bedroom 3

11' 5" x 11' 9" (3.47m x 3.59m)

Bathroom

5' 2" x 10' 11" (1.58m x 3.32m)



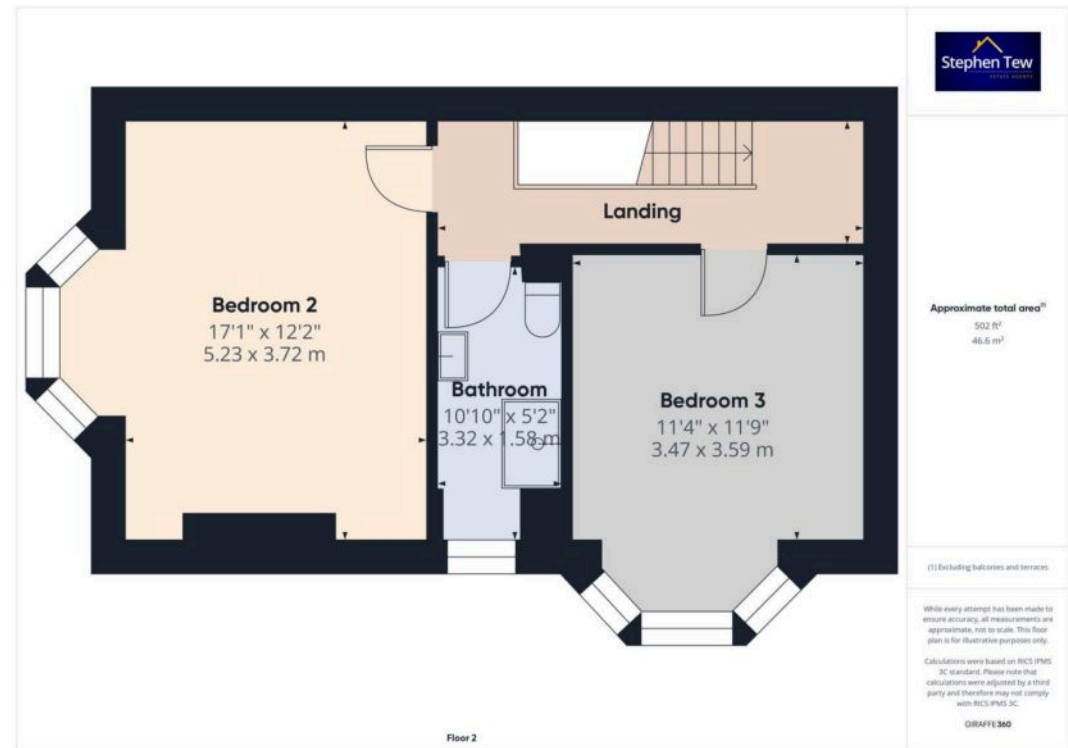


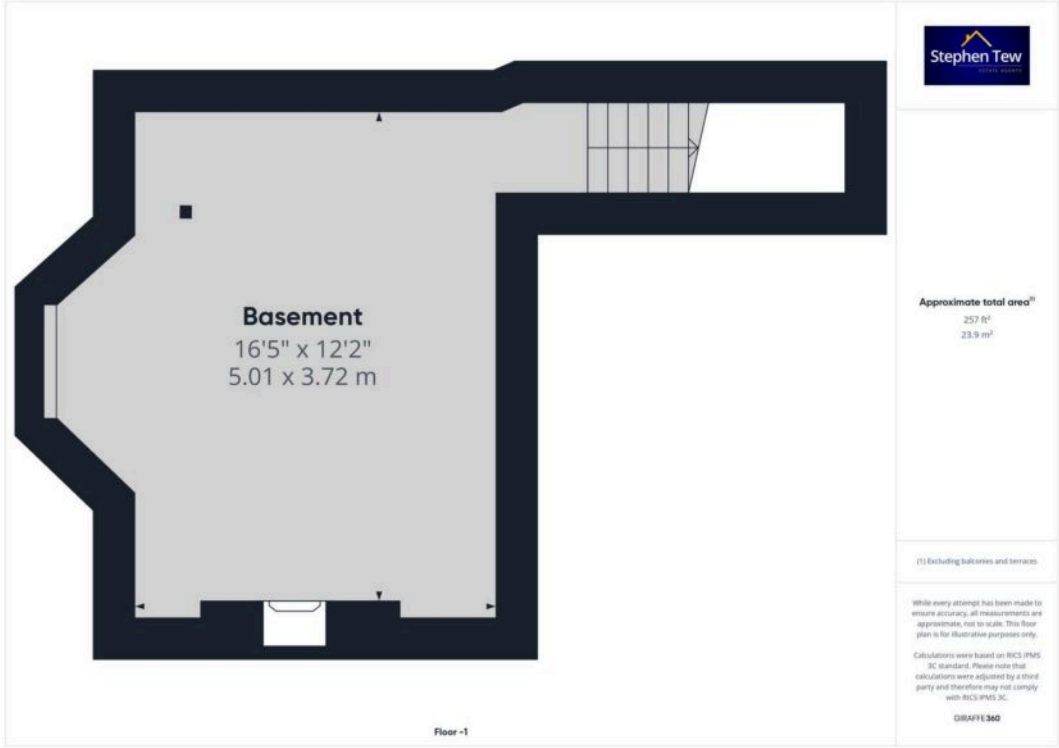
GARDEN

OFF STREET

1 Parking Space









Stephen Tew Estate Agents

1b Queens Square, Poulton-le-Fylde - FY6 7BW

01253 401111

info@stephentew.co.uk

www.stephentew.co.uk/

