



5 Moorland Apts, 5 Poulton Drive, Poulton-Le-Fylde

Poulton-Le-Fylde

Offers Over **£180,000**

5 Moorland Apartments

5 Poulton Drive, Poulton-Le-Fylde

Nestled in a sought-after location, this delightful 2 bedroom ground apartment offers a perfect blend of comfort and convenience. The spacious ground floor apartment boasts a balcony and a garage, providing ample outdoor space for relaxation and storage. The property features an entrance hallway leading to a well-equipped kitchen with integrated appliances, a utility room, a cosy lounge, two double bedrooms - one with an en-suite, and a family bathroom. Benefit from the close proximity to the charming town of Poulton-Le-Fylde, excellent transportation links, and a variety of local amenities. This property is offered with no onward chain, making it an enticing opportunity for a smooth and hassle-free move. Additional features include UPVC double glazed windows and electric heating for your comfort and convenience.

Council Tax band: C

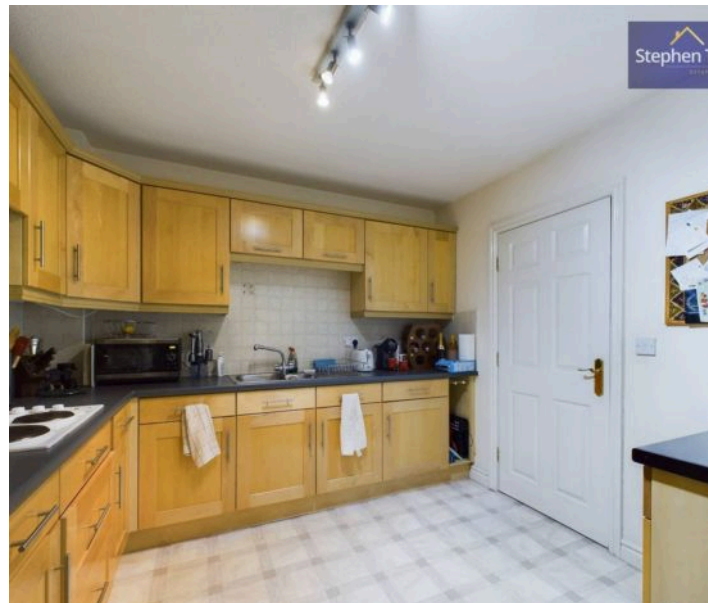
Tenure: Leasehold

- Spacious Ground Floor Apartment With Balcony And Garage
- Entrance Hallway, Kitchen With Integrated Appliances, Utility, Lounge, Two Double Bedrooms One With En-Suite, Family Bathroom
- Close Proximity To Poulton-Le-Fylde, Transportation Links And Local Amenities
- No Onward Chain
- UPVC Double Glazed Windows, Electric Heating





Hallway
Kitchen
9' 9" x 11' 6" (2.98m x 3.51m)





Lounge

18' 5" x 11' 7" (5.61m x 3.54m)

Utility

4' 9" x 6' 6" (1.46m x 1.97m)

Lounge

18' 5" x 11' 7" (5.61m x 3.54m)

Bathroom

5' 9" x 6' 8" (1.75m x 2.04m)

Bedroom 1

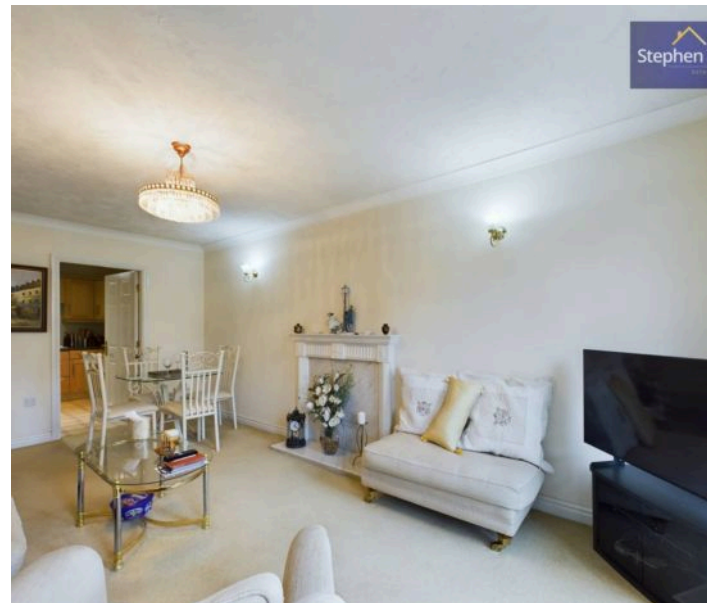
20' 0" x 9' 11" (6.10m x 3.03m)

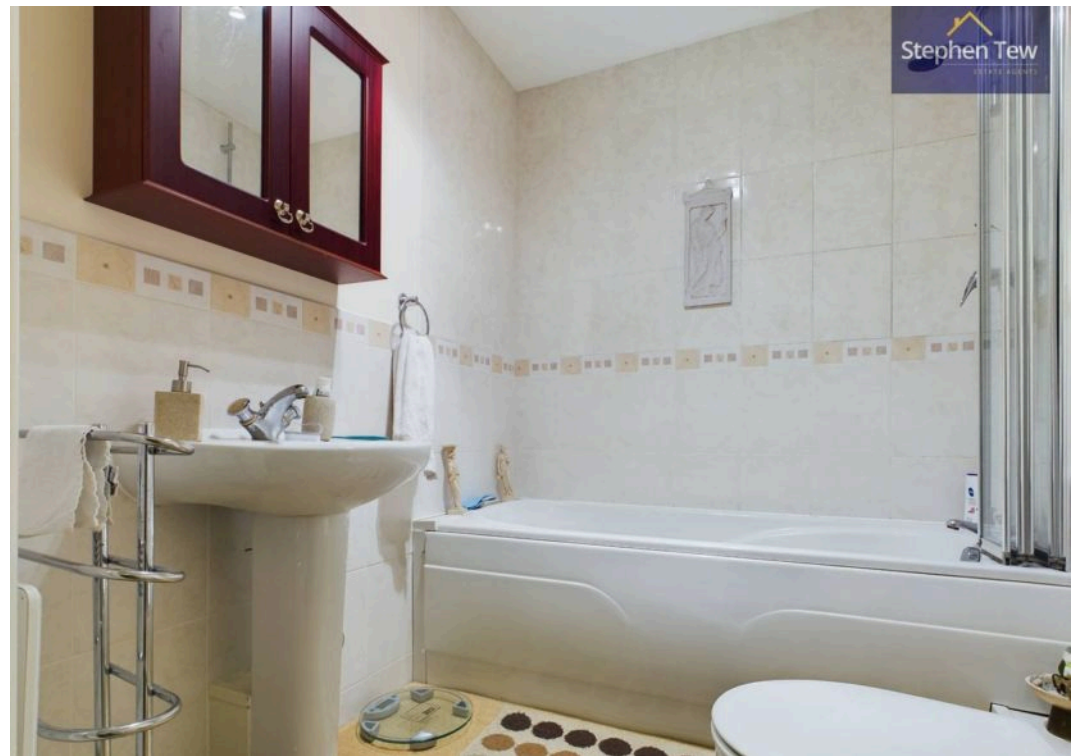
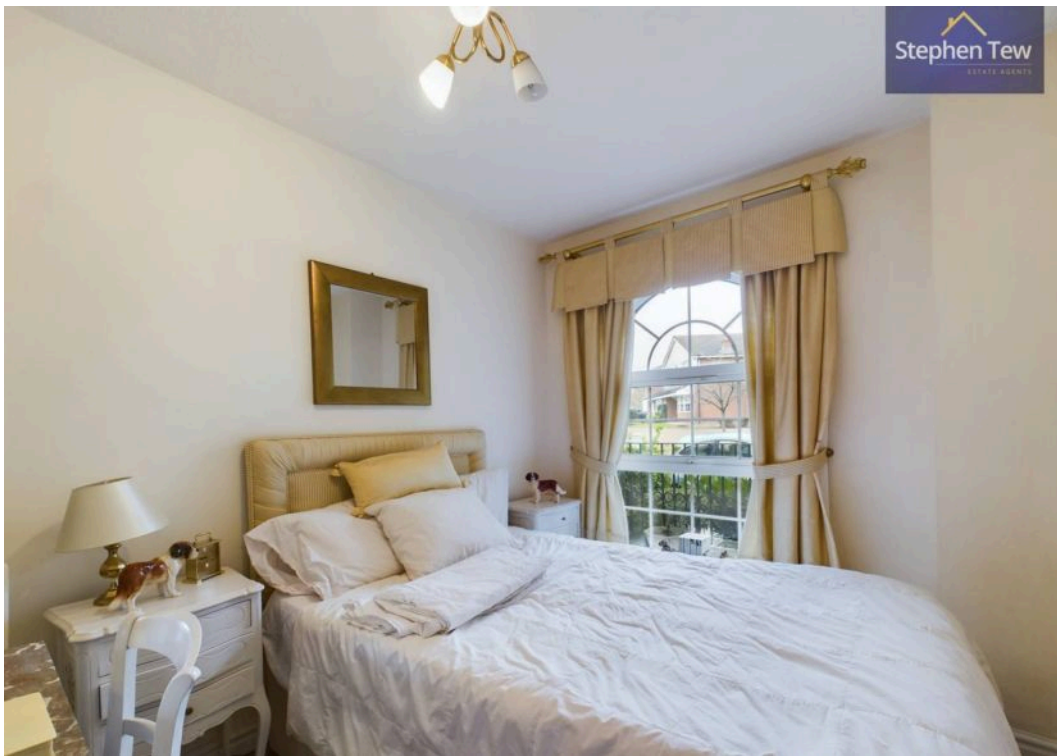
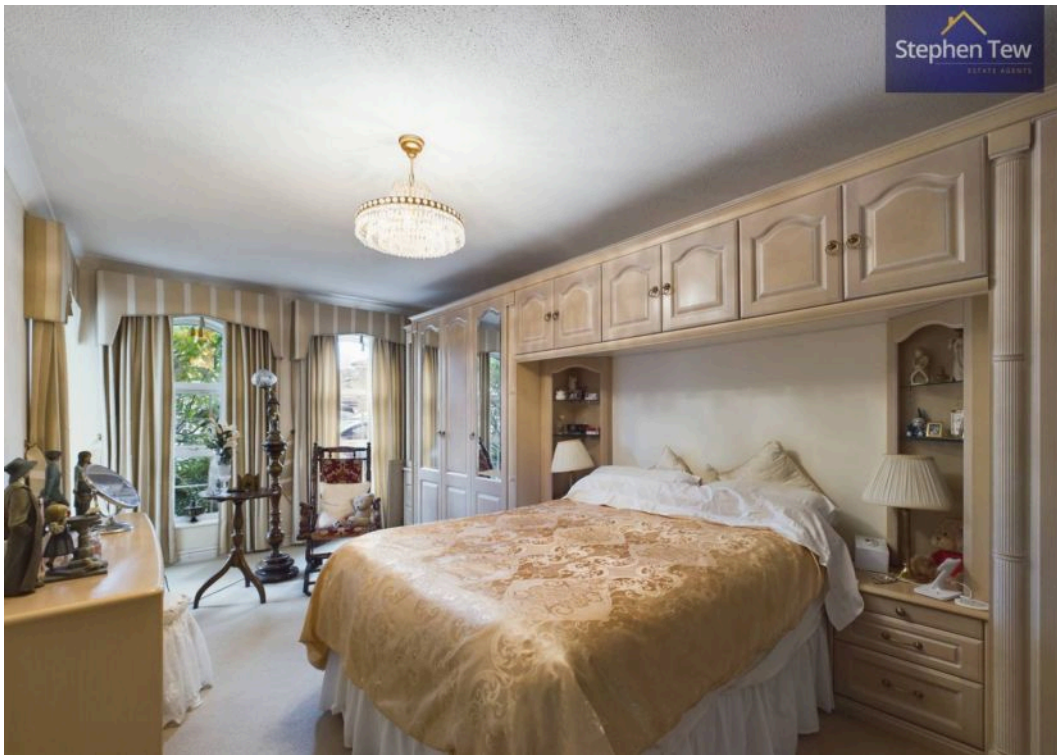
En-Suite

8' 0" x 6' 8" (2.44m x 2.04m)

Bedroom 2

9' 8" x 7' 8" (2.94m x 2.33m)







BALCONY

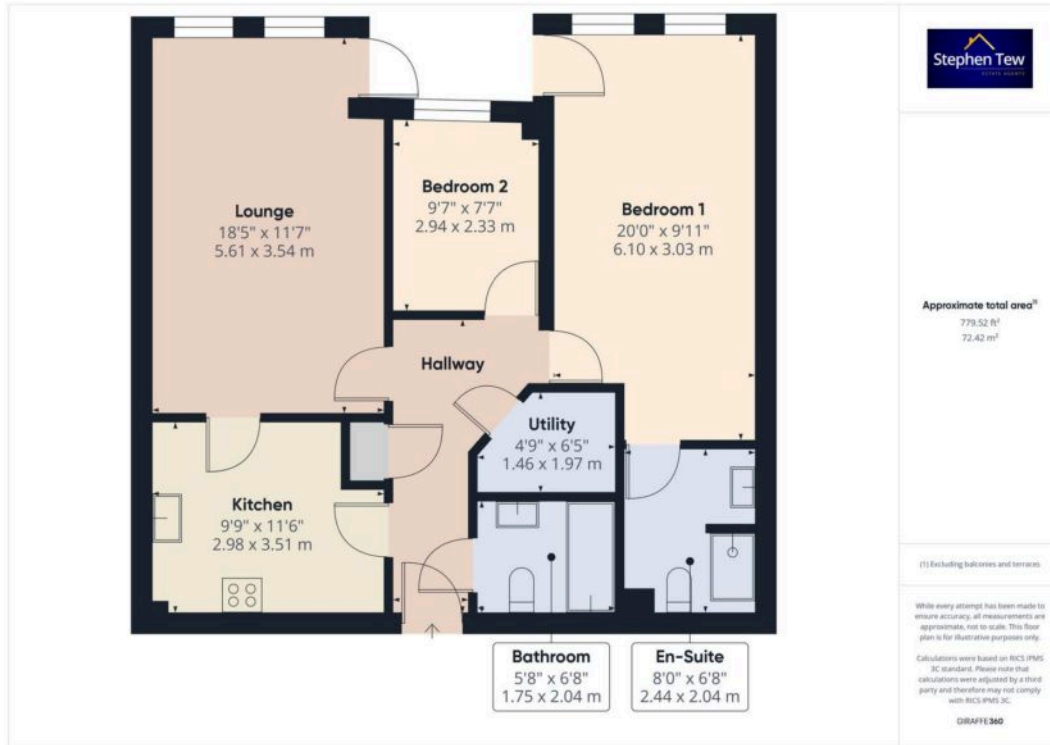
GARAGE

Single Garage

OFF STREET

1 Parking Space







Stephen Tew Estate Agents

Stephen Tew Estate Agents, 132 Highfield Road - FY4 2HH

01253 401111

info@stephentew.co.uk

www.stephentew.co.uk

