



12 Gladstone Street, Blackpool

Blackpool

Offers Over £85,000



# 12 Gladstone Street

Blackpool, Blackpool

Nestled in a sought-after residential area, this charming 3-bedroom mid-terraced house presents an excellent opportunity for those seeking a comfortable and well-maintained family home. The property boasts a traditional layout comprising a welcoming lounge, a separate dining room that is ideal for entertaining guests, a kitchen offering ample storage space, and a spacious bathroom. Further features include an enclosed rear yard offering privacy and providing a tranquil outdoor sanctuary for relaxation. This property is offered with no onward chain, making it an attractive choice for buyers seeking a hassle-free move-in experience.

Council Tax band: A

Tenure: Freehold

- 3 Bedroom Mid Terraced House
- Lounge, Dining Room, Kitchen, Spacious Bathroom
- Enclosed Rear Yard
- No Onward Chain







## Entrance Vestibule

## Hallway

## Lounge

10' 8" x 14' 2" (3.25m x 4.31m)

## Dining Room

11' 5" x 13' 0" (3.47m x 3.96m)

## Kitchen

8' 10" x 8' 11" (2.70m x 2.71m)

## Landing

## Bedroom 1

8' 10" x 12' 11" (2.69m x 3.94m)

## Bedroom 2

7' 1" x 11' 10" (2.16m x 3.60m)

## Bedroom 3

7' 1" x 11' 9" (2.17m x 3.59m)

## Bathroom

8' 10" x 8' 10" (2.70m x 2.68m)







## Entrance Vestibule

## Hallway

## Lounge

10' 8" x 14' 2" (3.25m x 4.31m)

## Dining Room

11' 5" x 13' 0" (3.47m x 3.96m)

## Kitchen

8' 10" x 8' 11" (2.70m x 2.71m)

## Landing

## Bedroom 1

8' 10" x 12' 11" (2.69m x 3.94m)

## Bedroom 2

7' 1" x 11' 10" (2.16m x 3.60m)

## Bedroom 3

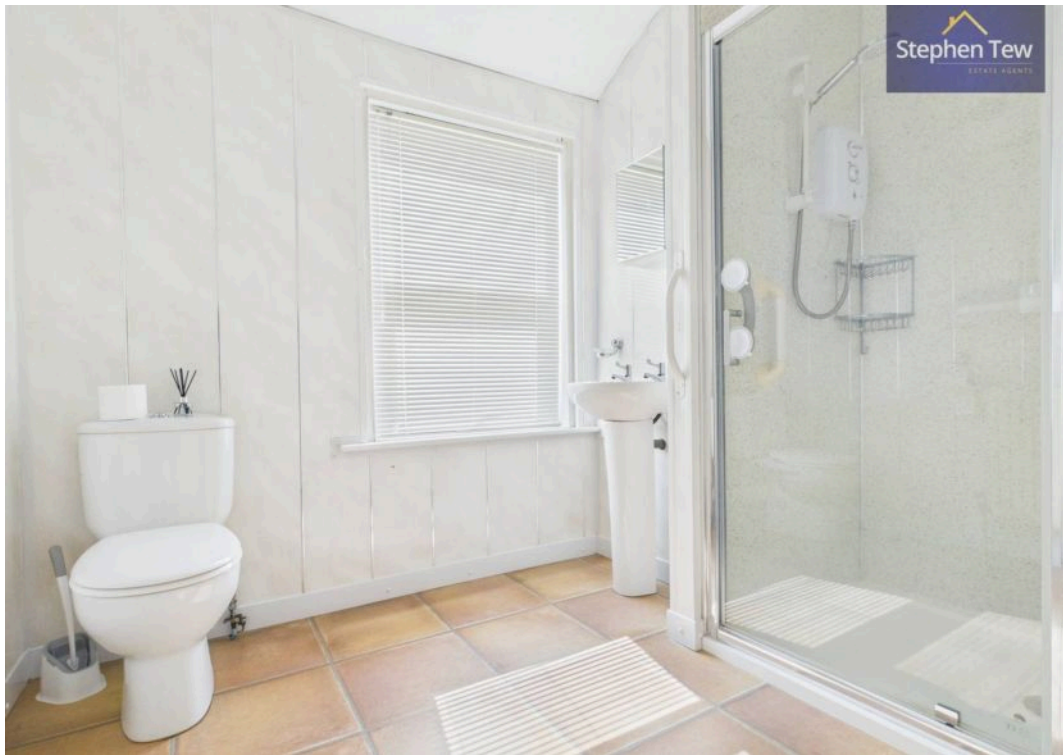
7' 1" x 11' 9" (2.17m x 3.59m)

## Bathroom

8' 10" x 8' 10" (2.70m x 2.68m)









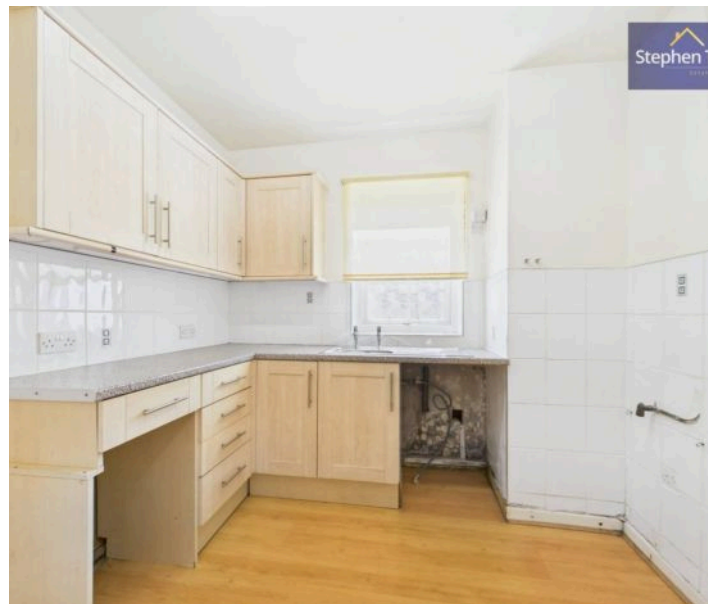
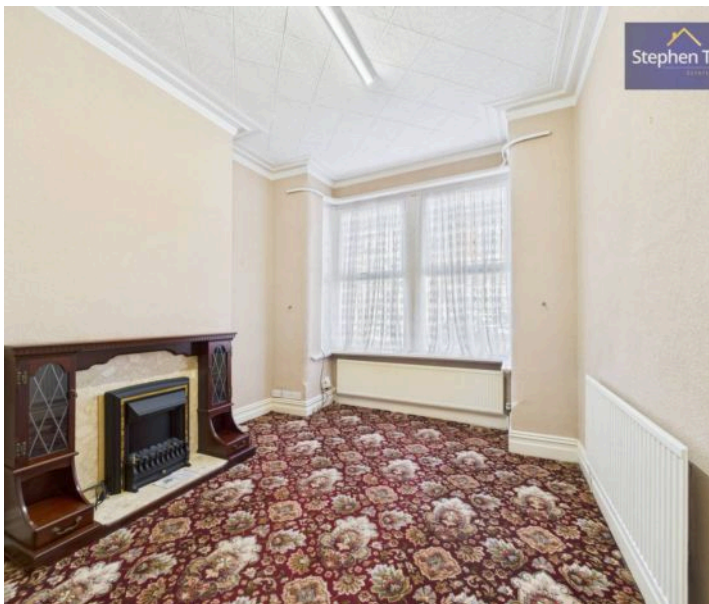


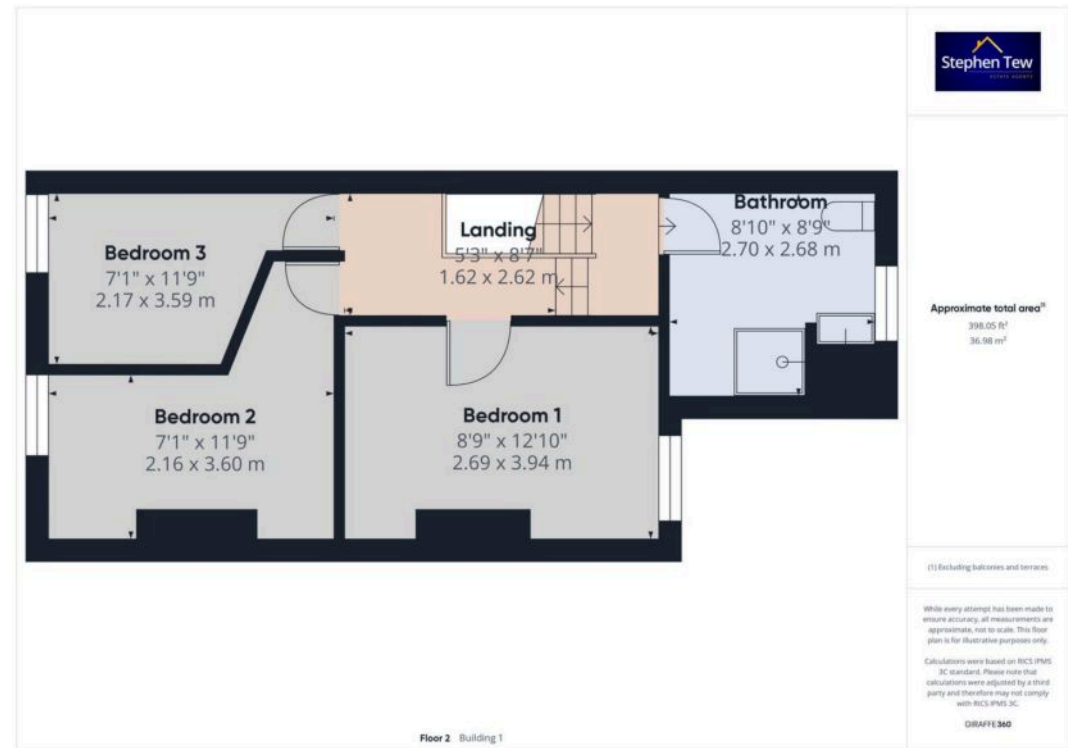
#### **YARD**

South facing yard to the rear with brick outhouse.

#### **ON STREET**

1 Parking Space









## Stephen Tew Estate Agents

Stephen Tew Estate Agents, 132 Highfield Road - FY4 2HH

01253 401111

[info@stephentew.co.uk](mailto:info@stephentew.co.uk)

[www.stephentew.co.uk](http://www.stephentew.co.uk)

