



19 Park View Court, Blackpool

Blackpool

Offers Over **£90,000**

19 Park View Court

Blackpool

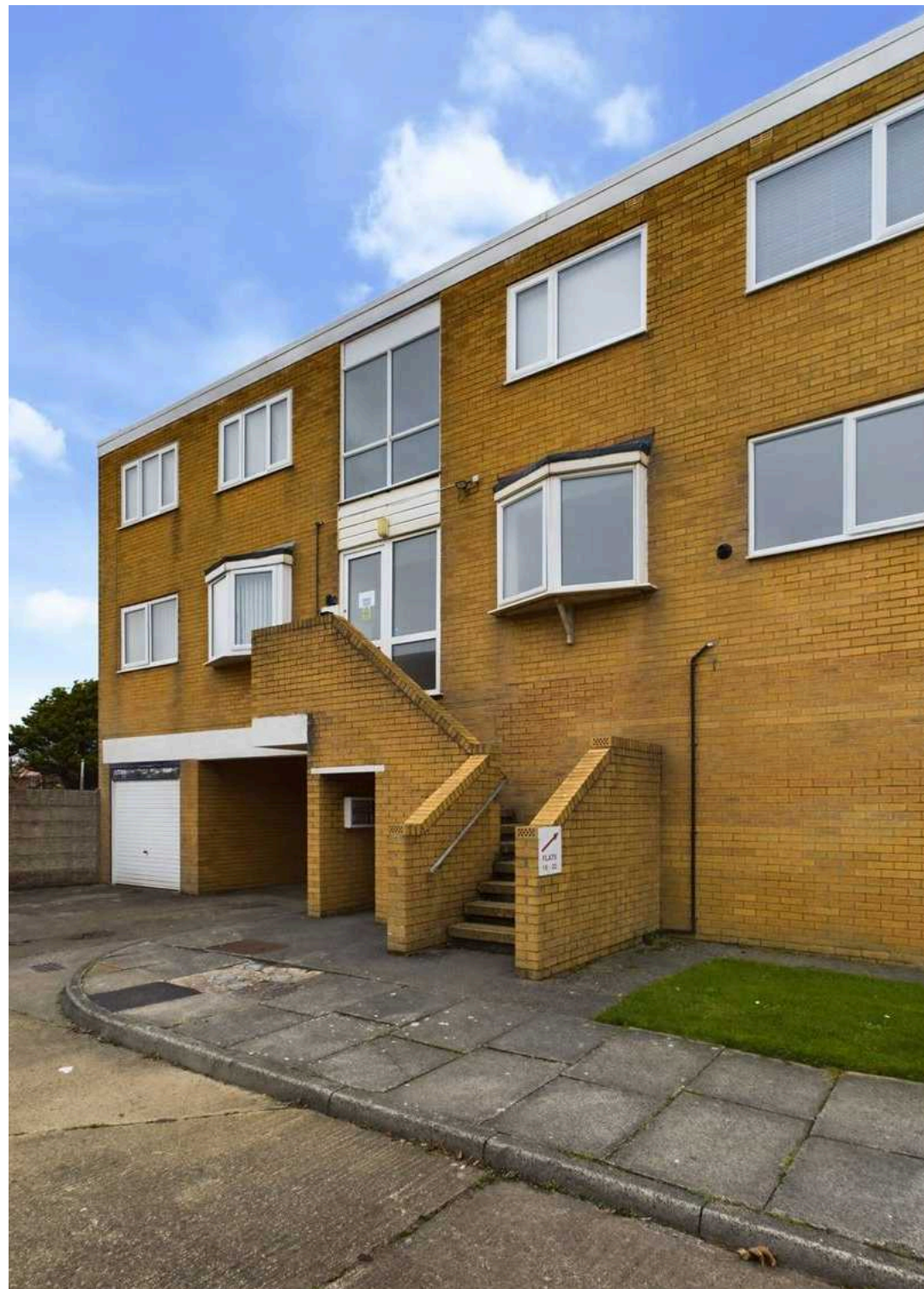
This purpose-built first-floor flat offers comfortable living accommodation with its 2 bedrooms and a 3-piece suite bathroom. Conveniently located off Highfield Road, this 2-bedroom apartment is a stone's throw away from various shops and amenities. The hallway leads to a spacious lounge, complete with sliding patio doors opening up to an east-facing balcony overlooking the park, offering a tranquil retreat. One of the bedrooms comes with fitted wardrobes, providing ample storage space.

The property boasts an integral garage, residents and visitor parking, as well as communal gardens for outdoor enjoyment. Gas central heating and UPVC double glazing contribute to comfortable living. Although some modernisation is required, this property presents an excellent opportunity for those looking to put their stamp on a well-located home.

Council Tax band: B

Tenure: Leasehold

- No Onward Chain
- Purpose Built First Floor Flat
- Fantastic Location, Just Off Highfield Road, Within Close Proximity To Shops And Amenities
- Hallway, Lounge With Sliding Patio Doors Opening Up To The Balcony, Kitchen, 2 Bedrooms, 1 With Fitted Wardrobes, 3 Piece Suite Bathroom
- East Facing Balcony Overlooking The Park
- Integral Garage, Residents And Visitor Parking, Communal Gardens
- Gas Central Heating, UPVC Double Glazing
- Requires Kitchen Installation And Modernisation
- Combi Boiler In Cupboard In 2nd Bedroom





Stephen Tew
ESTATE AGENTS

Hallway

3' 4" x 13' 2" (1.01m x 4.01m)

Lounge

15' 9" x 13' 10" (4.79m x 4.22m)

Kitchen

15' 9" x 8' 11" (4.80m x 2.71m)

Bedroom 1

12' 5" x 10' 1" (3.78m x 3.07m)

Bedroom 2

10' 4" x 8' 11" (3.14m x 2.72m)

Bathroom

7' 2" x 5' 9" (2.19m x 1.75m)

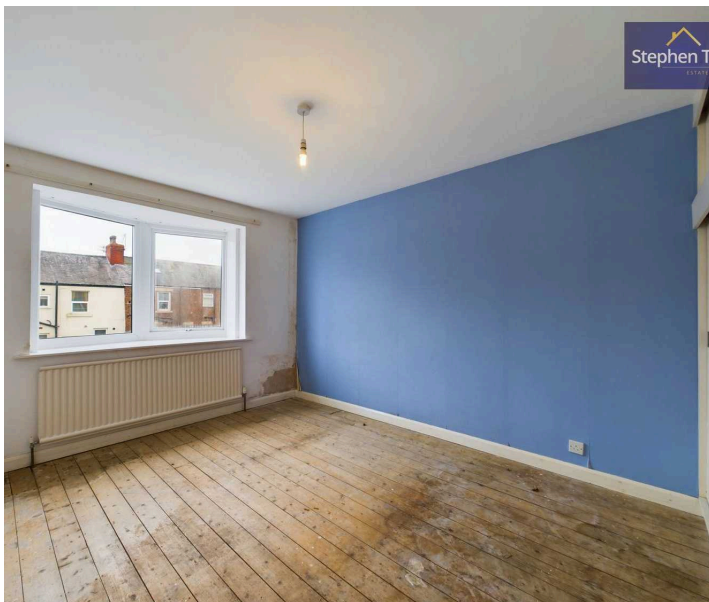
Communal Garden

Garage

Single Garage

Allocated parking

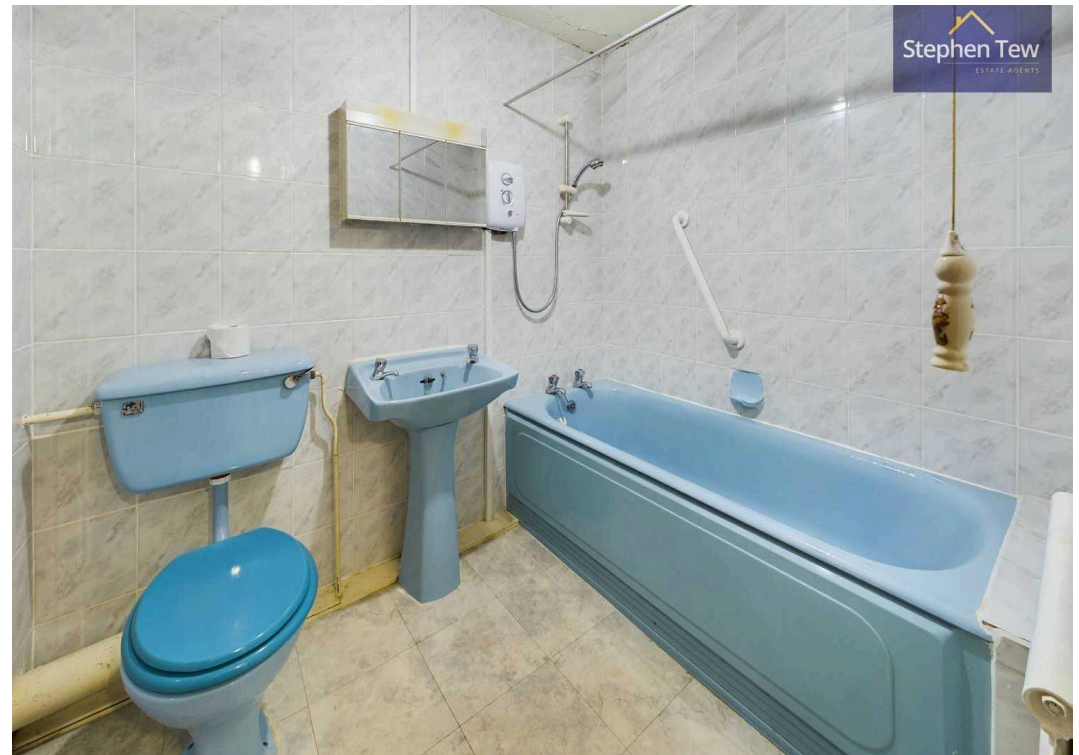
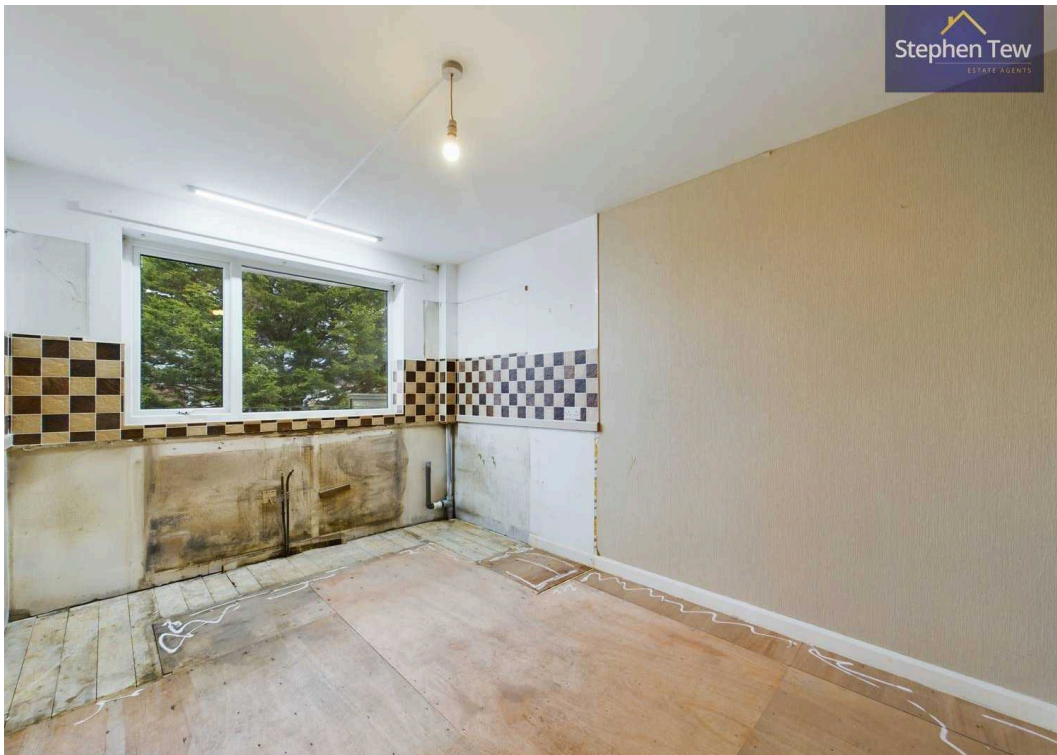
1 Parking Space

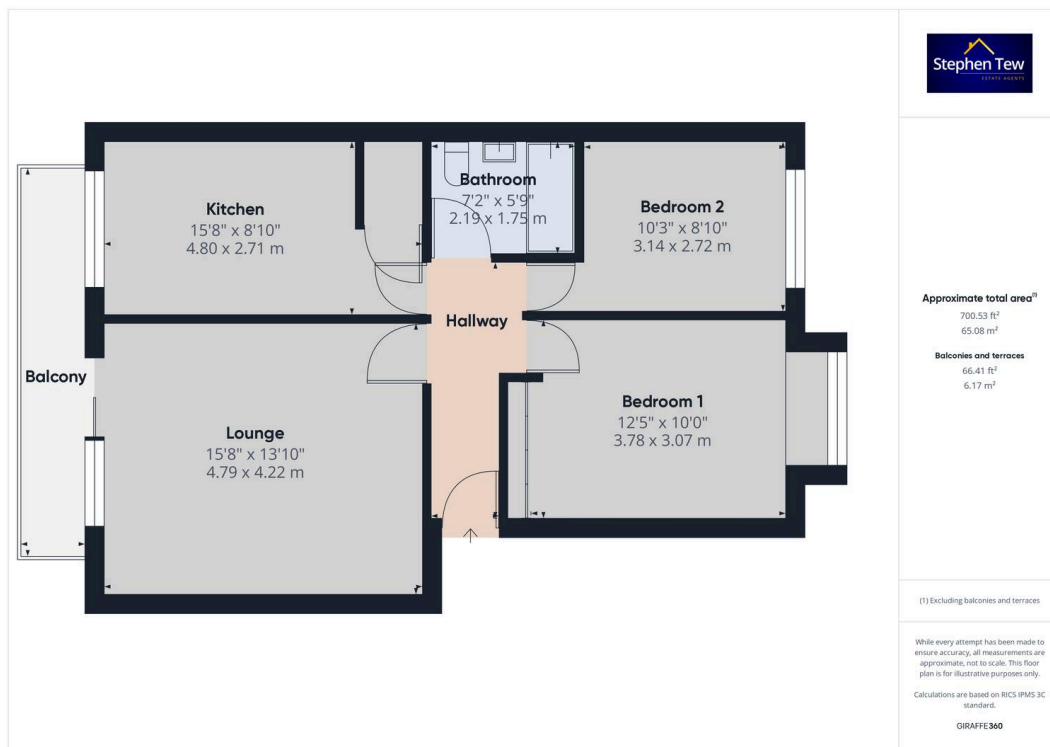


Stephen Tew
ESTATE AGENTS



Stephen Tew
ESTATE AGENTS







Stephen Tew Estate Agents

Stephen Tew Estate Agents, 132 Highfield Road - FY4 2HH

01253 401111

info@stephentew.co.uk

www.stephentew.co.uk

