



**Flat 4, 203 Dickson Road, Blackpool**

Blackpool

Guide Price **£20,000**

## Flat 4

203 Dickson Road, Blackpool

**Being Sold via Secure Sale online bidding. Terms & Conditions apply. Starting Bid £20000**

Presenting a rare opportunity to acquire a charming first floor studio flat situated in the heart of Blackpool. This studio apartment is strategically located within easy reach of the bustling town centre, scenic promenade, sandy beach, local attractions, and excellent transportation connections.

Benefiting from its prime location, this property offers convenience and accessibility to all the amenities and entertainment that Blackpool has to offer. Whether for personal use or investment purposes, this studio flat represents a great opportunity in a sought-after area.

Boasting a well-designed layout and modern amenities, the property provides a comfortable living space that is both functional and stylish. Perfect for individuals seeking a cosy urban retreat or investors looking to capitalise on the lucrative property market in Blackpool.

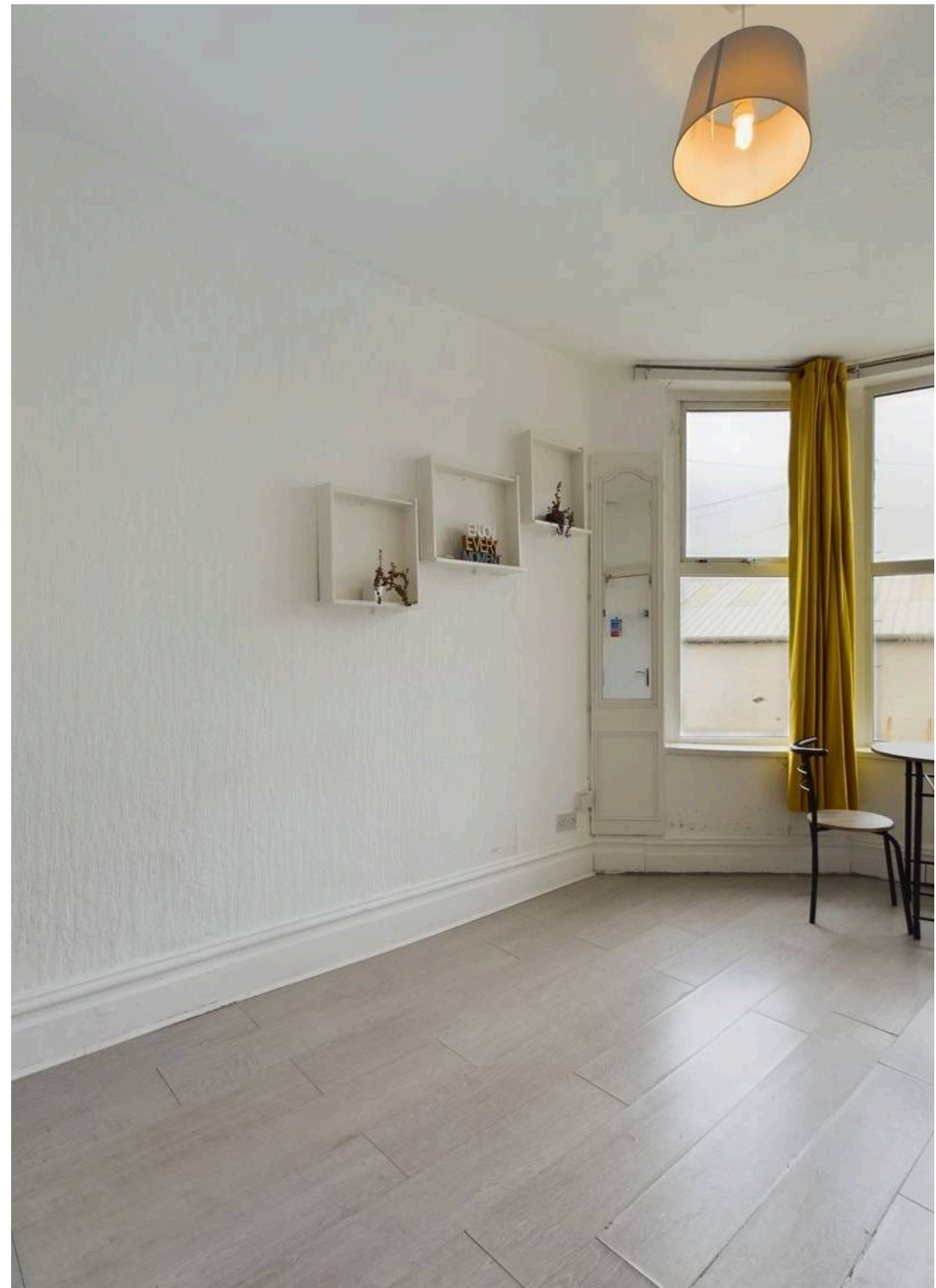
Do not miss the chance to own this studio apartment, offering a blend of convenience, comfort, and potential for a rewarding investment endeavour. Schedule a viewing today to experience the allure of this fantastic property firsthand.

**Please note, any viewings or offers that take place from this moment must be placed through the auction T&Cs as per the Sellers agreement.**

Council Tax band: TBD

Tenure: Leasehold

- Lounge / Bedroom, Fitted Kitchen and Bathroom
- Within close proximity to the Town Centre, Promenade & Beach, Local Attractions and Fantastic Transport Links
- Great Investment Opportunity
- First Floor Studio Apartment in the Heart of Blackpool







**Communal Entrance Hall**

**Lounge / Bedroom**

14' 1" x 8' 10" (4.29m x 2.69m)

**Kitchen**

6' 1" x 8' 0" (1.86m x 2.43m)

**Bathroom**

4' 11" x 6' 8" (1.49m x 2.03m)





**Communal Entrance Hall**

**Lounge / Bedroom**

14' 1" x 8' 10" (4.29m x 2.69m)

**Kitchen**

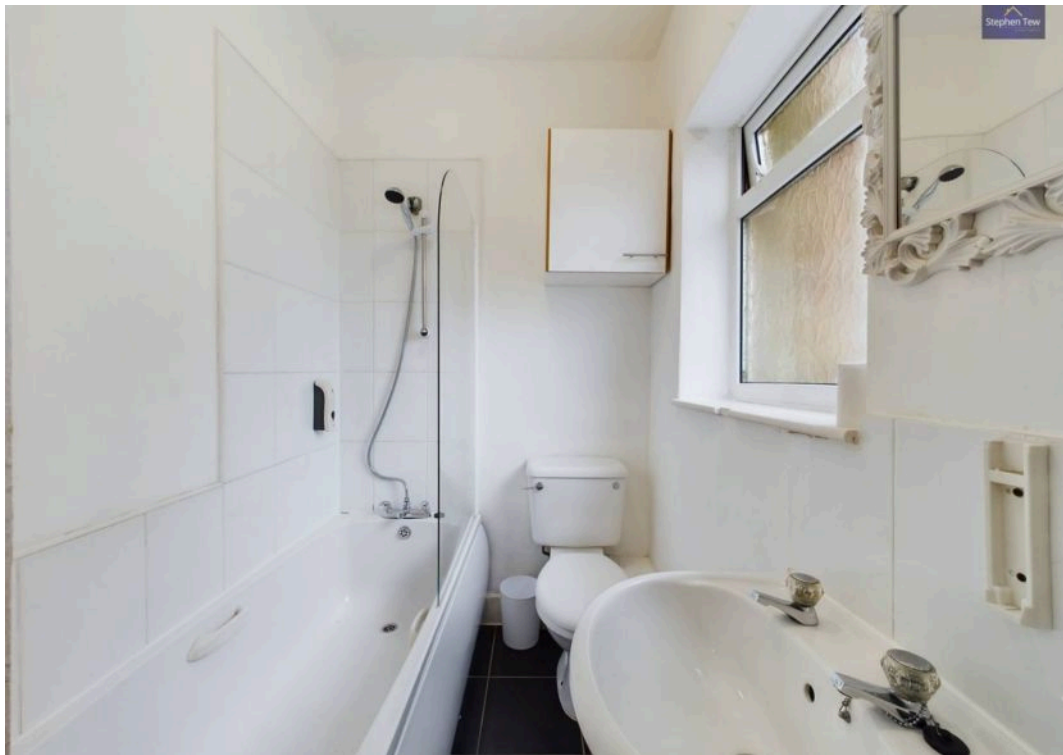
6' 1" x 8' 0" (1.86m x 2.43m)

**Bathroom**

4' 11" x 6' 8" (1.49m x 2.03m)









ON STREET









## Stephen Tew Estate Agents

Stephen Tew Estate Agents, 132 Highfield Road - FY4 2HH

01253 401111

[info@stephentew.co.uk](mailto:info@stephentew.co.uk)

[www.stephentew.co.uk](http://www.stephentew.co.uk)

