

71 Cunliffe Road, Blackpool

Blackpool

Offers Over **£60,000**

71 Cunliffe Road

Blackpool, Blackpool

This 3-bedroom mid-terraced house presents an exceptional investment opportunity for those seeking to renovate and modernise to their taste. Offered with no onward chain, the property includes an entrance vestibule leading to a lounge and a kitchen/diner on the ground floor. Upstairs, three bedrooms and a three-piece shower room offer comfortable living spaces. Conveniently located within close proximity to shops, schools, transport links, and local amenities, this property promises a convenient lifestyle for its future residents.

Stepping outside, the property includes a low-maintenance garden at the rear, perfect for relaxing or entertaining alfresco. With the potential to create a charming outdoor sanctuary, this property's exterior complements the interior living spaces, making it a well-rounded opportunity for those looking for a project to transform a house into a dream home.

Property is being sold via Secure Sale Service - terms and conditions apply.

Council Tax band: A

Tenure: Freehold

- Investment Opportunity, in need of modernisation throughout
- Close Proximity to shops, schools, transport links and local amenities
- Property comprises of entrance vestibule, lounge, kitchen/diner to the ground floor
- To the first floor there are 3 bedrooms and a 3 piece suite shower room





Entrance vestibule

3' 1" x 3' 2" (0.93m x 0.97m)

Lounge

13' 4" x 12' 7" (4.07m x 3.83m)

Kitchen/Diner

10' 2" x 14' 2" (3.11m x 4.32m)

Landing

8' 0" x 6' 7" (2.45m x 2.01m)

Bedroom 1

13' 5" x 7' 4" (4.08m x 2.23m)

Bedroom 2

10' 3" x 9' 1" (3.12m x 2.78m)

Bedroom 3

10' 1" x 6' 7" (3.07m x 2.01m)

Bathroom

4' 11" x 5' 1" (1.51m x 1.54m)







FRONT GARDEN

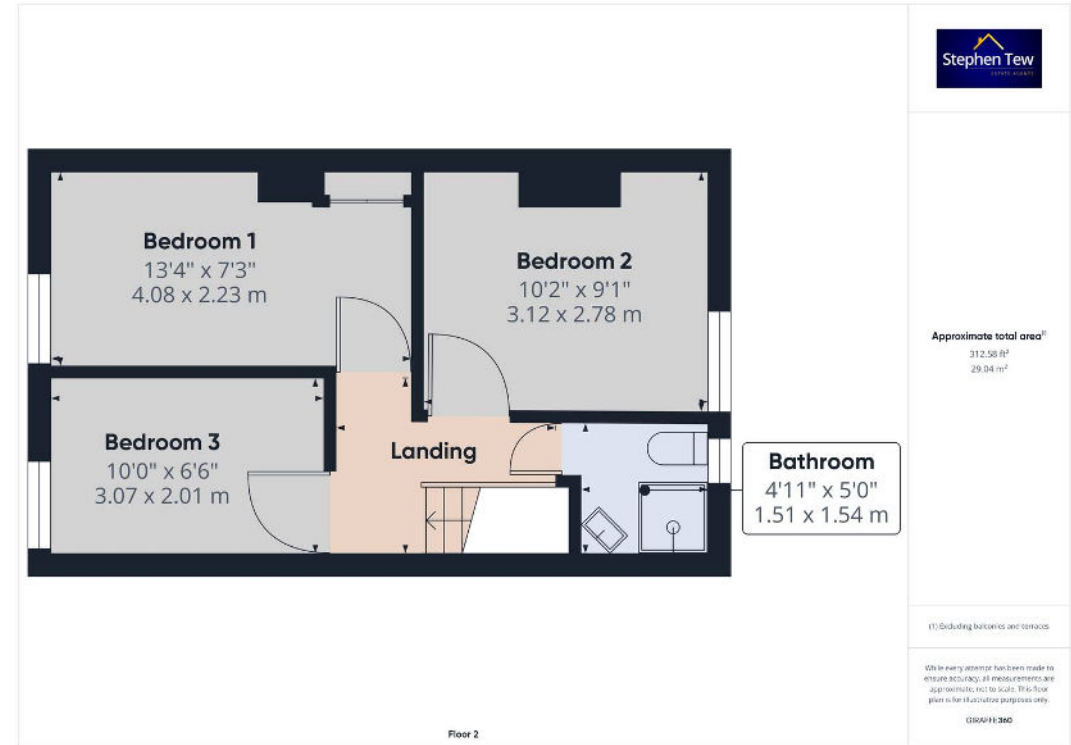
REAR GARDEN

Low maintenance garden to the rear

ON STREET

1 Parking Space







Stephen Tew Estate Agents

Stephen Tew Estate Agents, 132 Highfield Road - FY4 2HH

01253 401111

info@stephentew.co.uk

www.stephentew.co.uk

