



Flat 6, Harrowside Brow, 28 Harrowside

Blackpool

Offers Over **£85,000**

Flat 6

Harrowside Brow, Blackpool

Nestled in a prime location, this delightful 1-bedroom apartment offers a blend of comfort and convenience. Situated on the ground floor, this flat is within close proximity to the idyllic promenade, vibrant shops, and excellent transport links. Upon entering, you are greeted by a welcoming hallway leading to a generously sized lounge, illuminated by natural light streaming through the patio doors that open up to the communal garden. The fitted kitchen boasts modern amenities including an integrated hob and oven, perfect for culinary enthusiasts. The double bedroom features fitted wardrobes providing ample storage space, with a three-piece suite bathroom completing the property. Adding to the appeal are the new windows fitted in 2023, ensuring a comfortable and energy-efficient living environment for the discerning buyer.

Step outside to discover a well maintained communal garden to enjoy a morning coffee or host a leisurely alfresco gathering with friends and family, this outdoor space presents the ideal setting for relaxation and recreation.

Council Tax band: A

Tenure: Leasehold

- Ground Floor Flat within close proximity to the promenade, shops and transport links
- Hallway, Lounge with patio doors opening up to the communal garden, fitted Kitchen with integrated hob and oven, Bedroom with fitted wardrobes, 3 piece suite Bathroom
- New Windows Fitted in 2023





Hallway
7' 10" x 7' 2" (2.40m x 2.18m)

Lounge
10' 8" x 15' 1" (3.25m x 4.59m)

Kitchen
7' 1" x 10' 3" (2.17m x 3.13m)

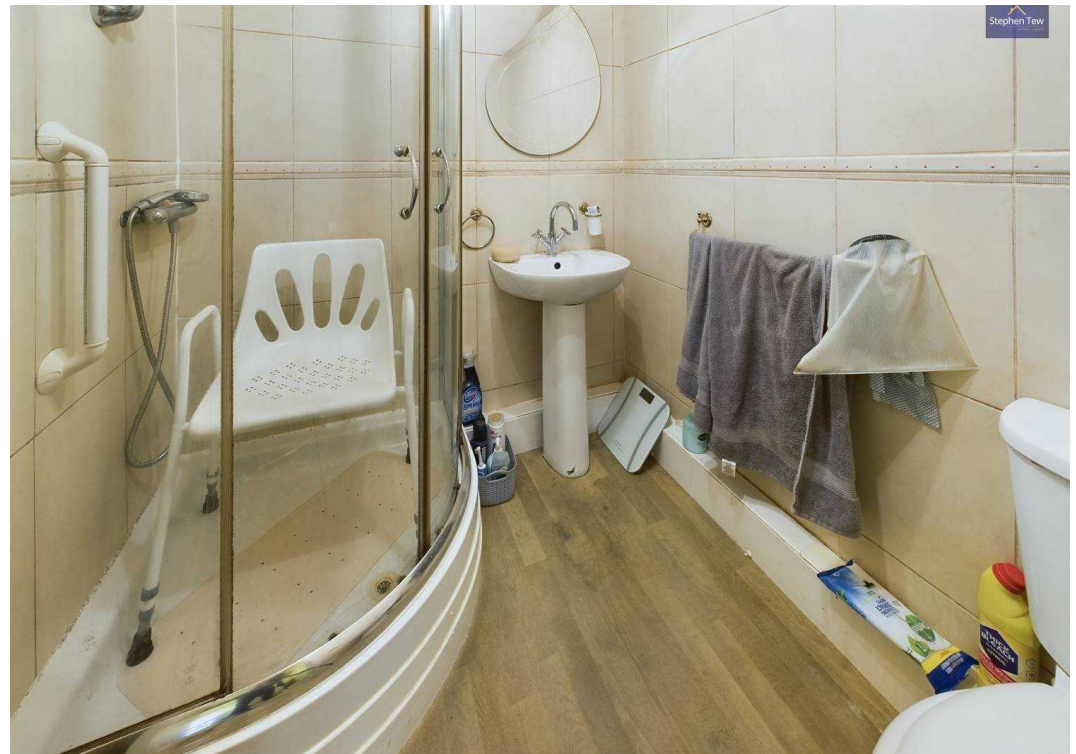
Bedroom
7' 11" x 14' 2" (2.42m x 4.31m)

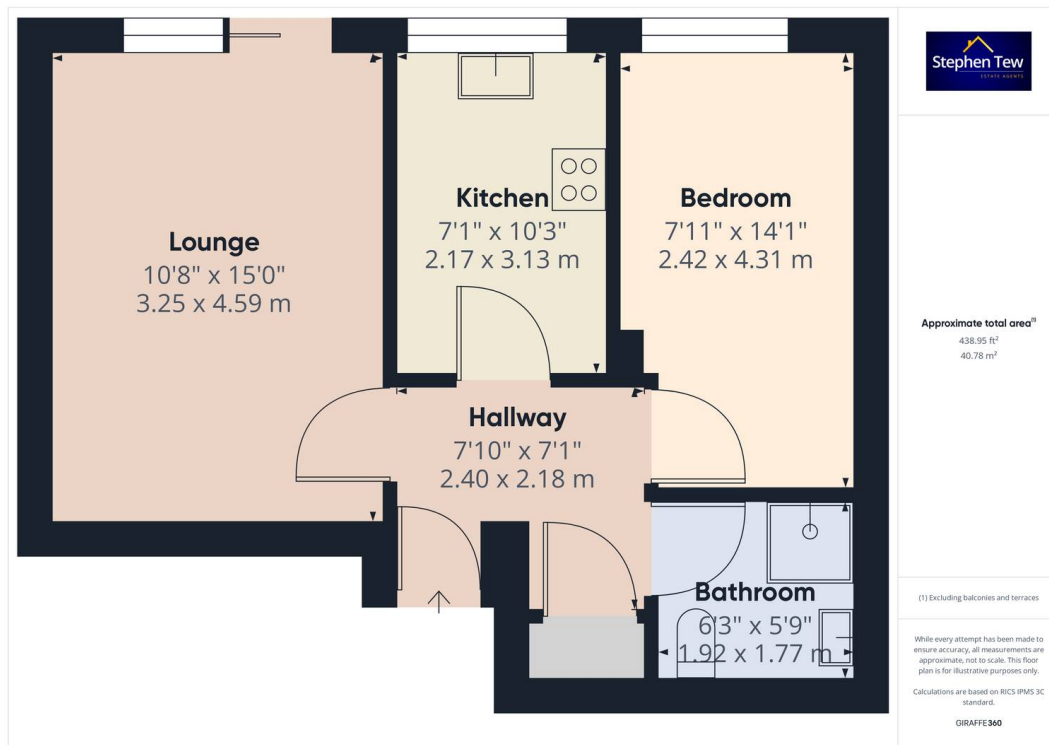
Bathroom
6' 4" x 5' 10" (1.92m x 1.77m)

Communal Garden

Communal garden









Stephen Tew Estate Agents

Stephen Tew Estate Agents, 132 Highfield Road - FY4 2HH

01253 401111

info@stephentew.co.uk

www.stephentew.co.uk

