



Garstang Road North, Wesham

Preston

Offers Over £160,000

Garstang Road North

Wesham, Preston

This 3-bedroom mid-terraced property presents itself as a deceptively spacious terraced family home. Upon entering, you are greeted by an entrance vestibule leading to a hallway, a cosy lounge, a separate dining room, and a well-appointed kitchen/diner boasting patio doors that open onto the charming garden. Upstairs features 3 bedrooms, with 2 benefiting from fitted wardrobes, all served by a 4-piece suite bathroom, ensuring comfort and convenience for the whole family.

The outdoor space of this property offers a delightful retreat from the hustle and bustle of daily life. Step outside onto the artificial lawn, ideal for low maintenance, and the decking area perfect for al fresco dining or entertaining guests. A rear gate provides convenient access, making it easy to enjoy outdoor activities or simply soak in the tranquil surroundings in this private outdoor haven.

Council Tax band: B

Tenure: Freehold

- Deceptively Spacious Terraced Family Home
- Entrance Vestibule, Hallway, Lounge, Dining Room, Kitchen/Diner with patio doors leading onto the garden
- 3 Bedrooms, 2 of which benefit from fitted wardrobes, 4 piece suite Bathroom





Entrance Vestibule
3' 10" x 3' 2" (1.18m x 0.97m)

Hallway
10' 10" x 3' 2" (3.29m x 0.97m)

Lounge
11' 4" x 11' 5" (3.45m x 3.48m)

Dining Room
13' 6" x 12' 0" (4.11m x 3.66m)

Kitchen/Diner
18' 9" x 7' 9" (5.71m x 2.36m)

Landing

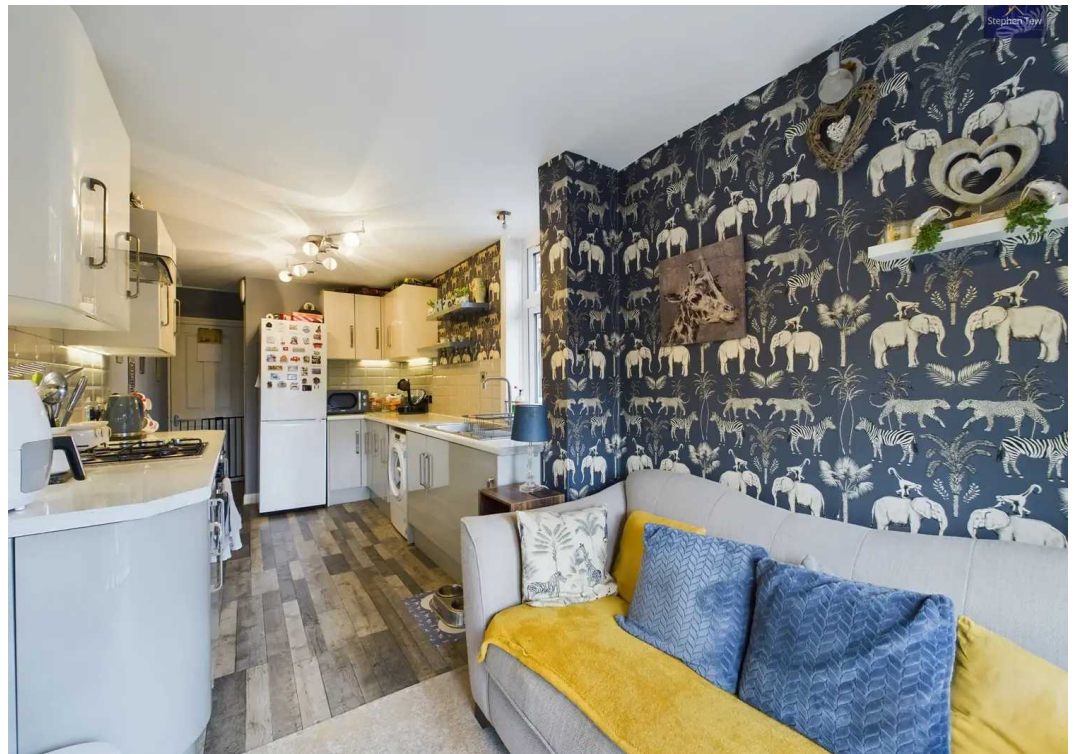
Bedroom 1
11' 8" x 13' 2" (3.56m x 4.01m)

Bedroom 2
13' 4" x 8' 2" (4.07m x 2.48m)

Bedroom 3
6' 4" x 7' 9" (1.92m x 2.35m)

Bathroom
11' 7" x 4' 11" (3.54m x 1.51m)









FRONT GARDEN

REAR GARDEN

Artificial lawn and decking with rear gate access.

ON STREET

1 Parking Space







Stephen Tew Estate Agents

Stephen Tew Estate Agents, 132 Highfield Road - FY4 2HH

01253 401111

info@stephentew.co.uk

www.stephentew.co.uk

